



Unemployment in Camden: Monthly Summary December 2015 (added 20 April 2016)

The full, rounded, all claimants JSA count for December 2015 is 2,590 (+30 up from November).

The monthly change in those claiming Jobseekers Allowance (JSA) is the same for men (0) and up for women (+30).

The rounded count¹ is used to create the detailed tables by age, sex and duration:

- For December 2015 the rounded count is 2,590; 30 higher than in November 2015.

The December 2015 JSA claimant unemployment rate² is:

- 2.4 % for men
- 1.9 % for women
- 2.1 % overall

Key Statistics

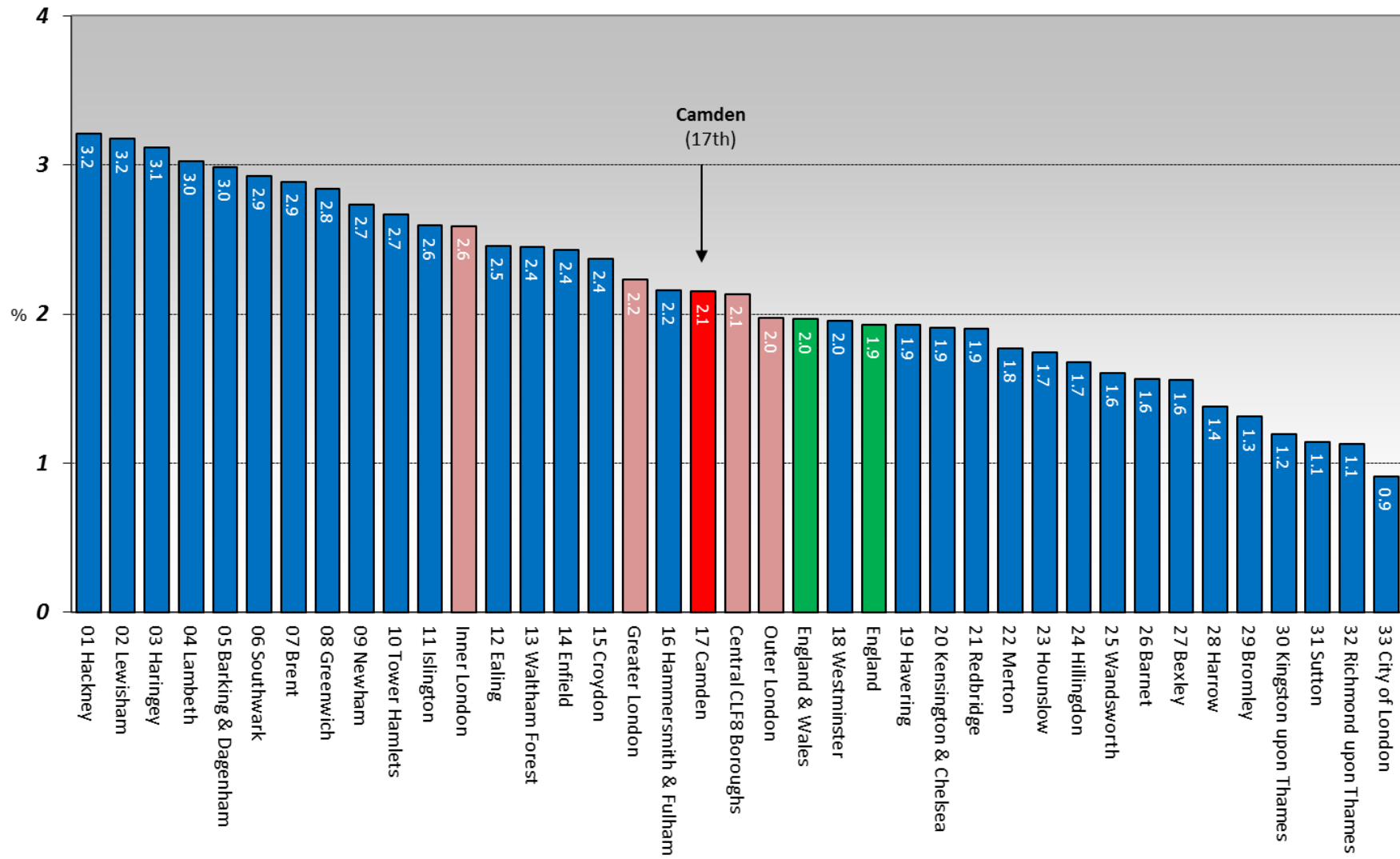
- Camden has the 17th highest JSA rate in London for all persons, 17th highest for men and 18th highest for women – Camden had the 13th highest overall claimant rate in March 2006.
- The overall Camden rate (2.1%) is lower than the Greater London rate (2.2%) – up to 2009 the Camden trend had been higher than the London average.
- The rate for men (2.4%) is the same as the Greater London rate (2.4%) – up to 2009 the trend for Camden had been higher than the London average.
- The rate for women (1.9%) is lower than the Greater London rate (2.1%) – up to 2009 the trend for Camden had been higher than the London average.
- The balance of male to female claimants is changing. It is currently 59% men and 41% women - back in 2001 the proportions were 72% and 28%.
- Camden ranks 17th highest borough for long-term claimants lasting over 1 year (24%).
- Camden ranks 13th highest borough for short-term claimants lasting under 6 months (61%).
- The overall claimant rate for Camden (2.1%) is now higher than the rate for England & Wales (2.0%).
- Since January 2013 there were fewer JSA claimants aged 18-24 than there were aged 50+.
- Monthly change by age: 18-24 is down 30 at 475; 25-49 is up 20 at 1,495 and 50+ is up 35 at 715.

Note that this is the FINAL monthly summary in the JSA claimant series due to the growing influence of Universal Credit. Although Universal Credit was only introduced in Camden in March 2016, it has made comparison with other areas increasingly dubious. GLA will create a new model based on DWP 'Claimant Count', combining JSA and Universal Credit.

¹ The rounded count is to the nearest 5 persons. The rounded count is based on computerised claims only, but which now accounts for almost all claims.

² The JSA claimant count rate is calculated as proportion of the economically active population (i.e. those available for work). The rate is calculated by GLA using the JSA claimant count (numerator) and GLA's estimate of the current economically active population for the current year (fully re-based using the 2011 Census).

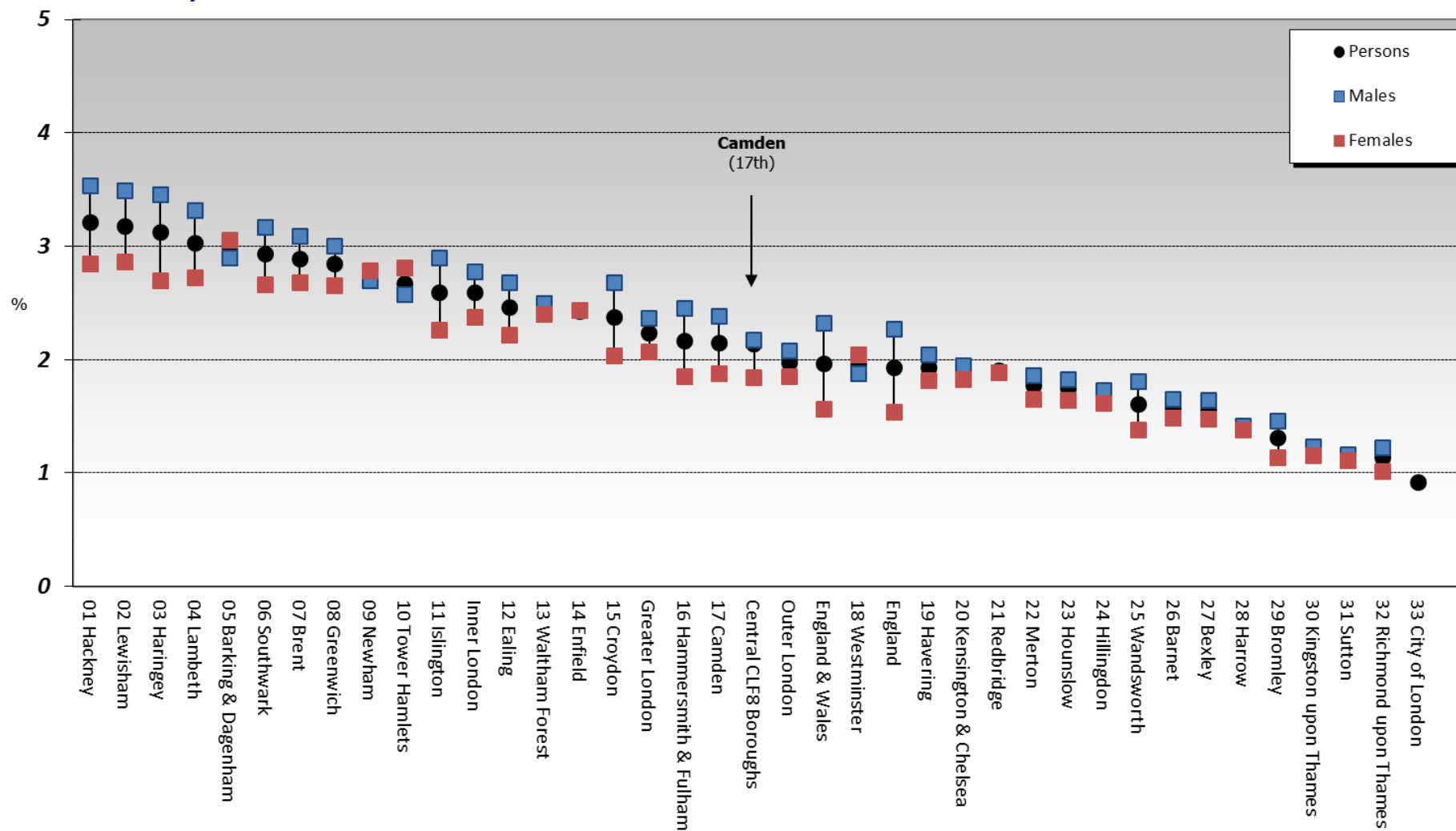
JSA Claimant Count Unemployment Rate (%): December 2015, Ranked by Persons



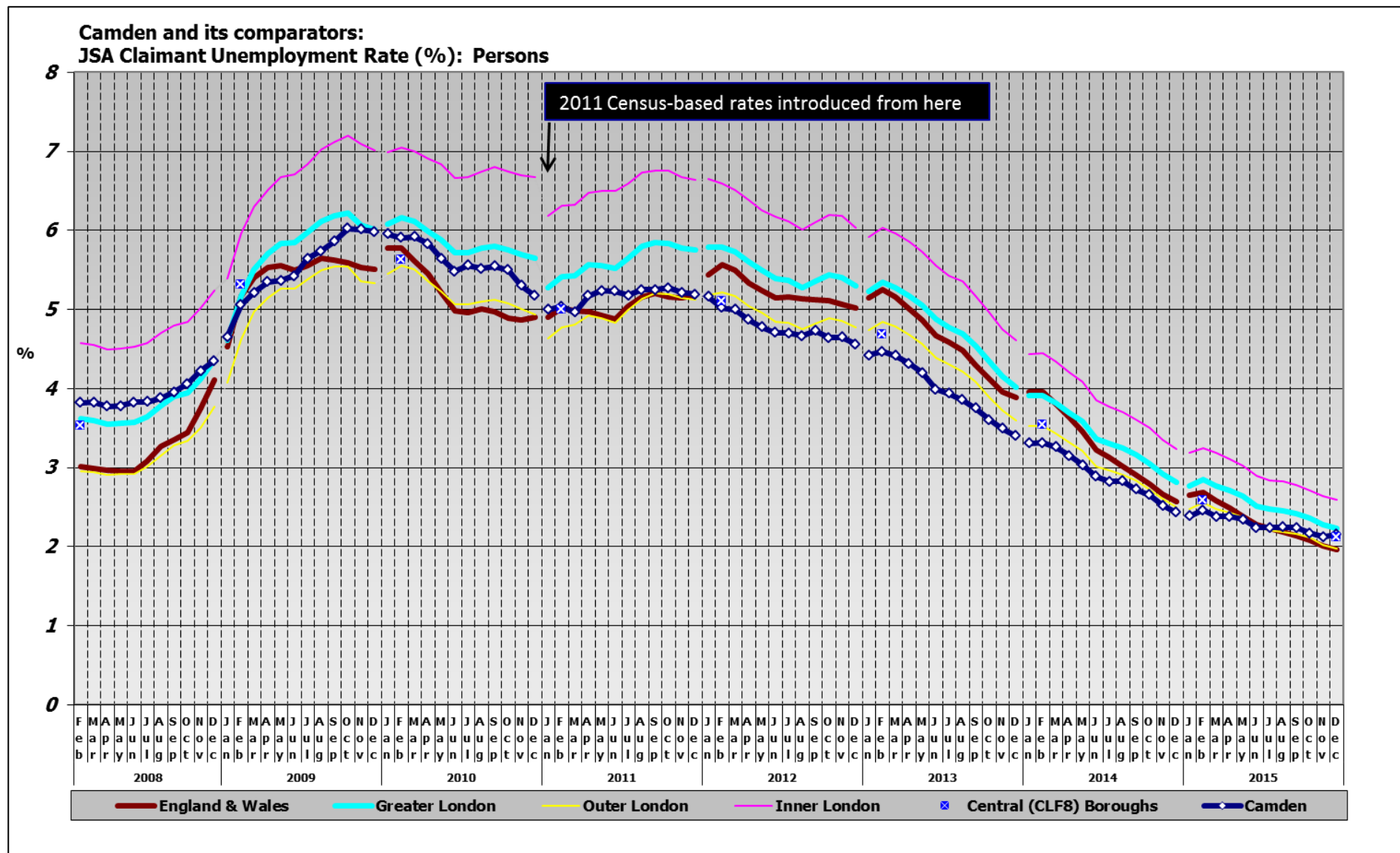
Source: JSA Claimants, © ONS, 2016; GLA MUST, © GLA, 2016.

Unemployment in Camden
Monthly Summary: December 2015

JSA Claimant Count Unemployment Rate (%): December 2015, by Sex Ranked by Persons

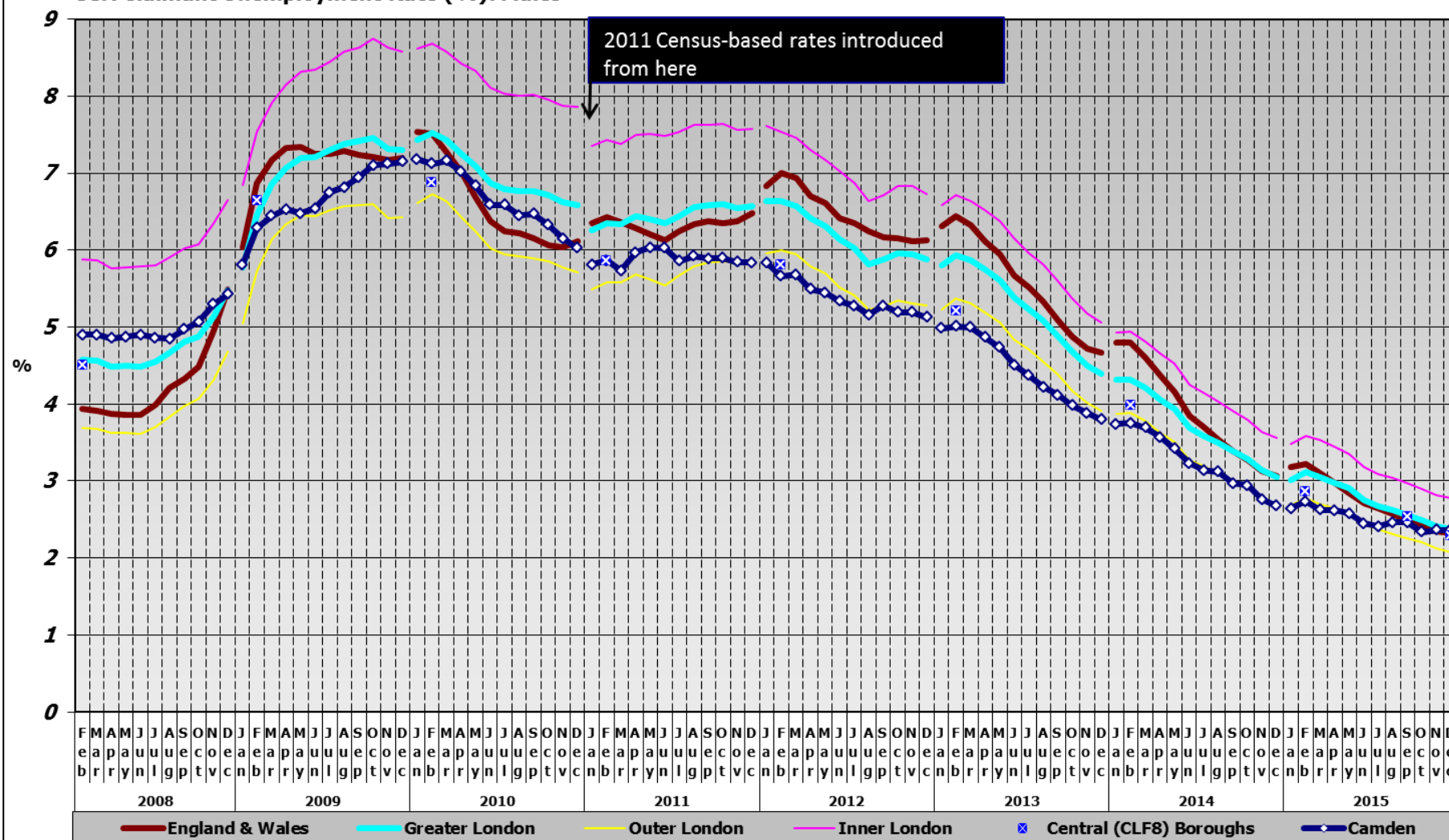


Source: JSA Claimants, © ONS, 2016; GLA MUST, © GLA, 2016.



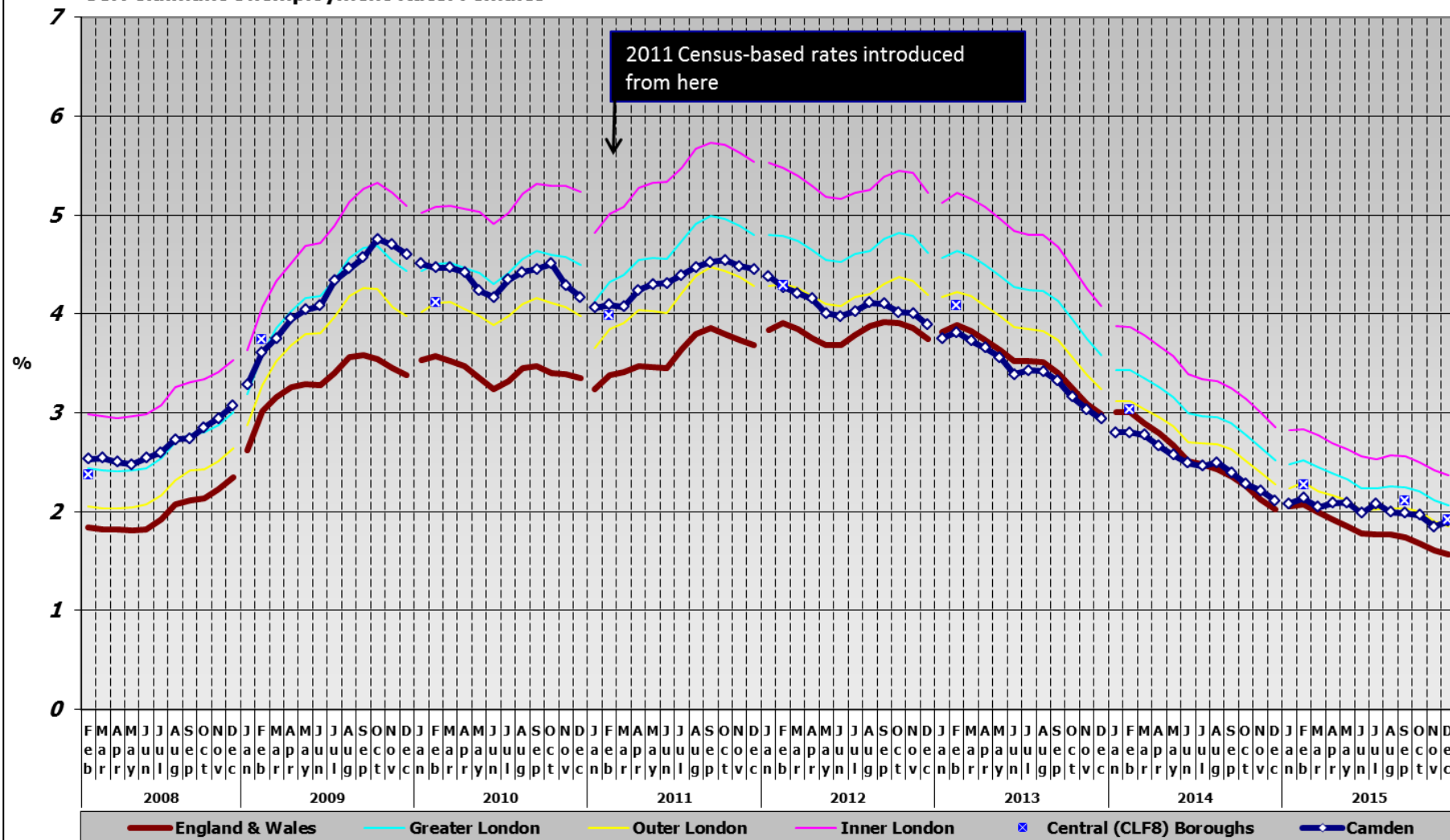
Source: JSA Claimants , © ONS, 2016; GLA MUST, © GLA, 2016.

Camden and its comparators: JSA Claimant Unemployment Rate (%): Males



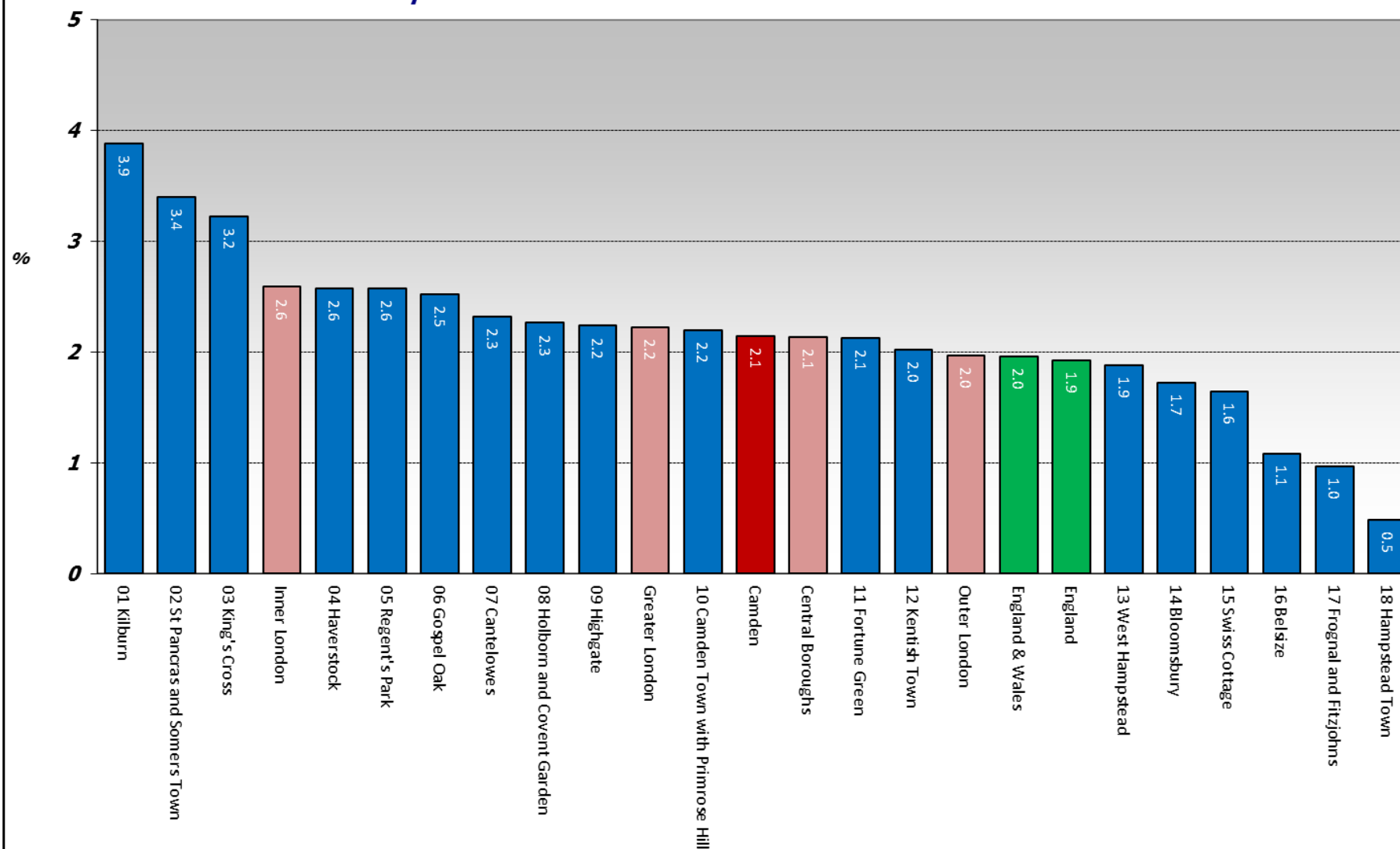
Source: JSA Claimants , © ONS, 2016; GLA MUST, © GLA, 2016.

**Camden and its comparators:
JSA Claimant Unemployment Rate: Females**



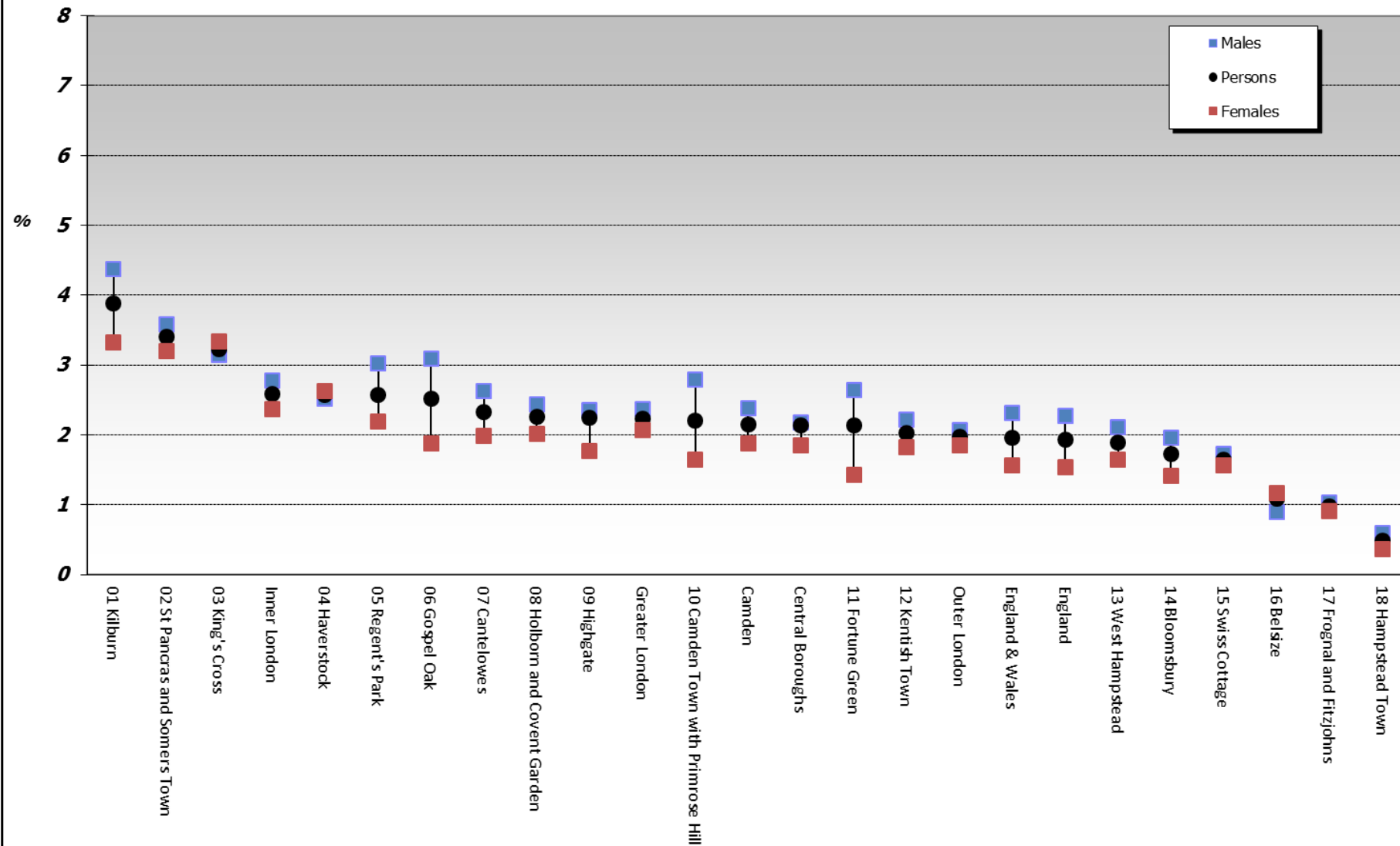
Source: JSA Claimants , © ONS, 2016; GLA MUST, © GLA, 2016.

JSA Claimant Unemployment Rate (%): December 2015 Camden Wards Ranked by Persons



Source: JSA Claimants, © ONS, 2016; GLA MUST, © GLA, 2016.

JSA Claimant Unemployment Rate (%): December 2015, by Sex Camden Wards Ranked by Persons



Source: JSA Claimants, © ONS, 2016; GLA MUST, © GLA, 2016.

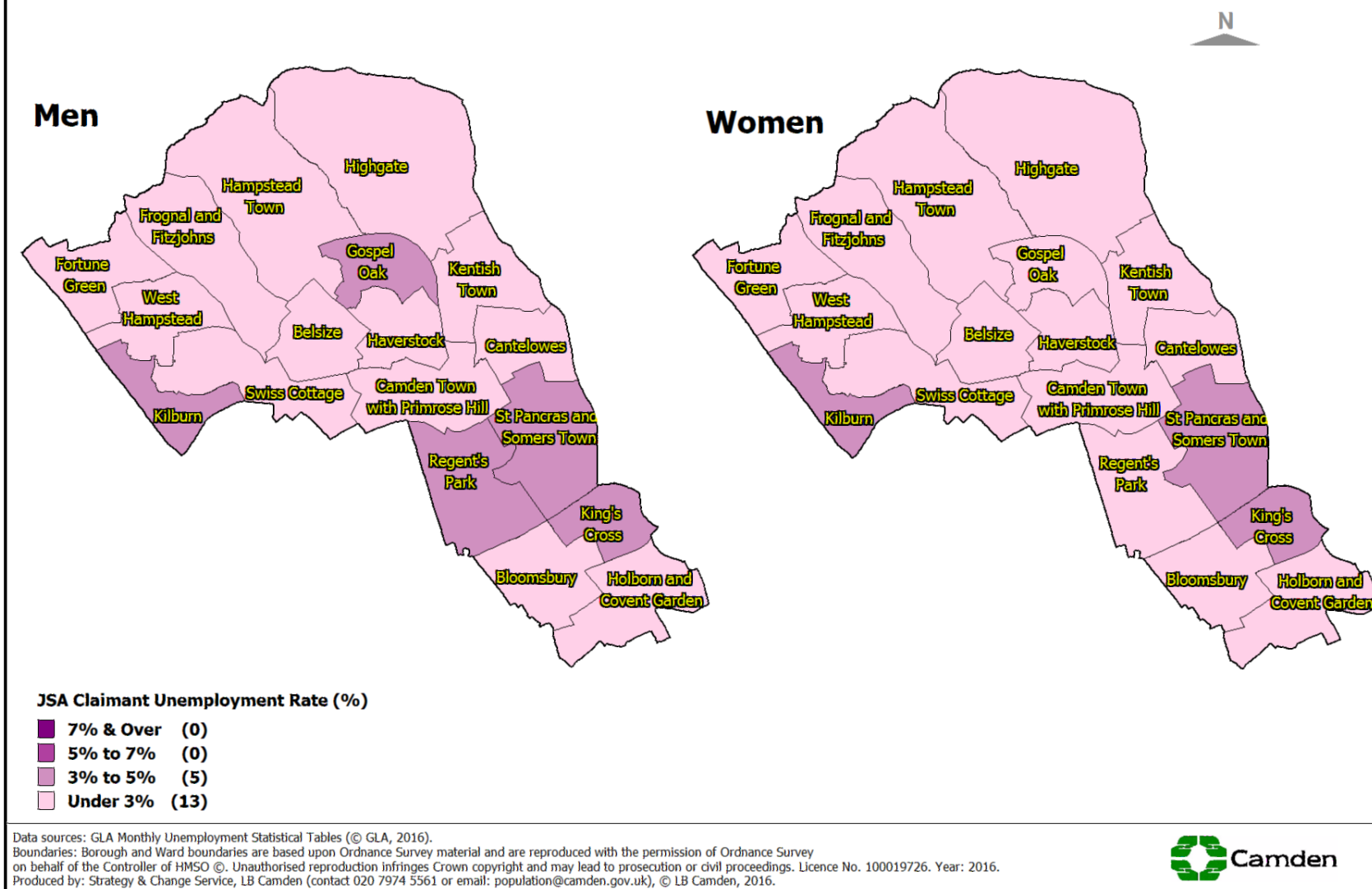
By ward

December 2016	Claimant Count			Claimant Count rate (%)		
	Persons	Males	Females	Persons	Males	Females
Belsize	80	35	40	1.1	0.9	1.2
Bloomsbury	85	55	30	1.7	2.0	1.4
Camden Town with Primrose Hill	160	110	55	2.2	2.8	1.6
Cantelowes	150	90	60	2.3	2.6	2.0
Fortune Green	160	105	50	2.1	2.6	1.4
Frognal and Fitzjohns	60	35	25	1.0	1.0	0.9
Gospel Oak	145	95	50	2.5	3.1	1.9
Hampstead Town	30	20	10	0.5	0.6	0.4
Haverstock	165	85	80	2.6	2.5	2.6
Highgate	130	70	50	2.2	2.4	1.8
Holborn and Covent Garden	165	105	60	2.3	2.4	2.0
Kentish Town	165	95	70	2.0	2.2	1.8
Kilburn	265	160	105	3.9	4.4	3.3
King's Cross	150	80	70	3.2	3.1	3.3
Regent's Park	170	110	65	2.6	3.0	2.2
St Pancras and Somers Town	235	130	105	3.4	3.6	3.2
Swiss Cottage	125	70	55	1.6	1.7	1.6
West Hampstead	155	90	65	1.9	2.1	1.6
Camden	2,590	1,540	1,045	2.1	2.4	1.9

Links

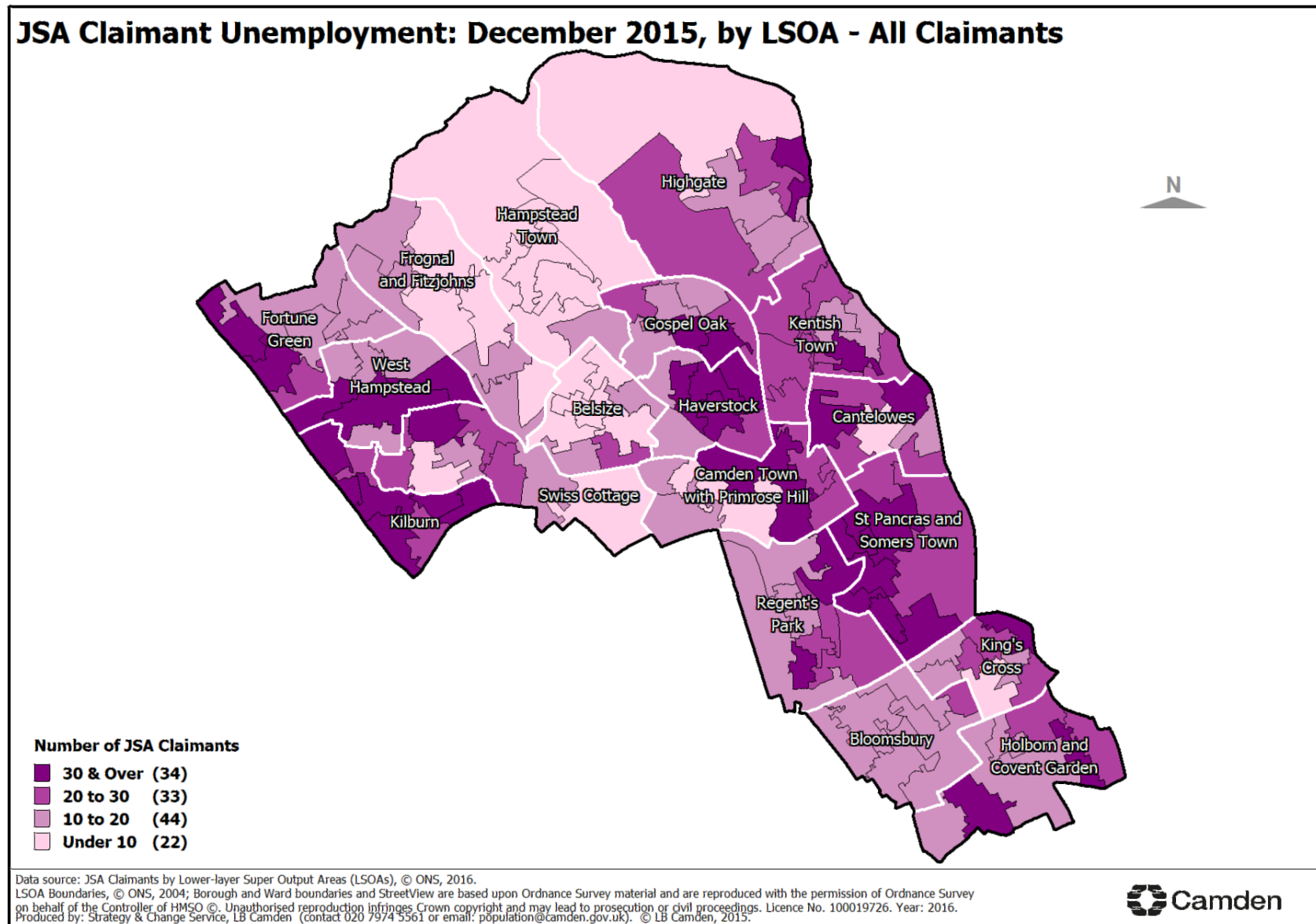
- The latest full monthly *Unemployment in Camden* bulletin can be downloaded from [Open Data Camden](#).

Claimant Unemployment Rate December 2015, Camden Wards



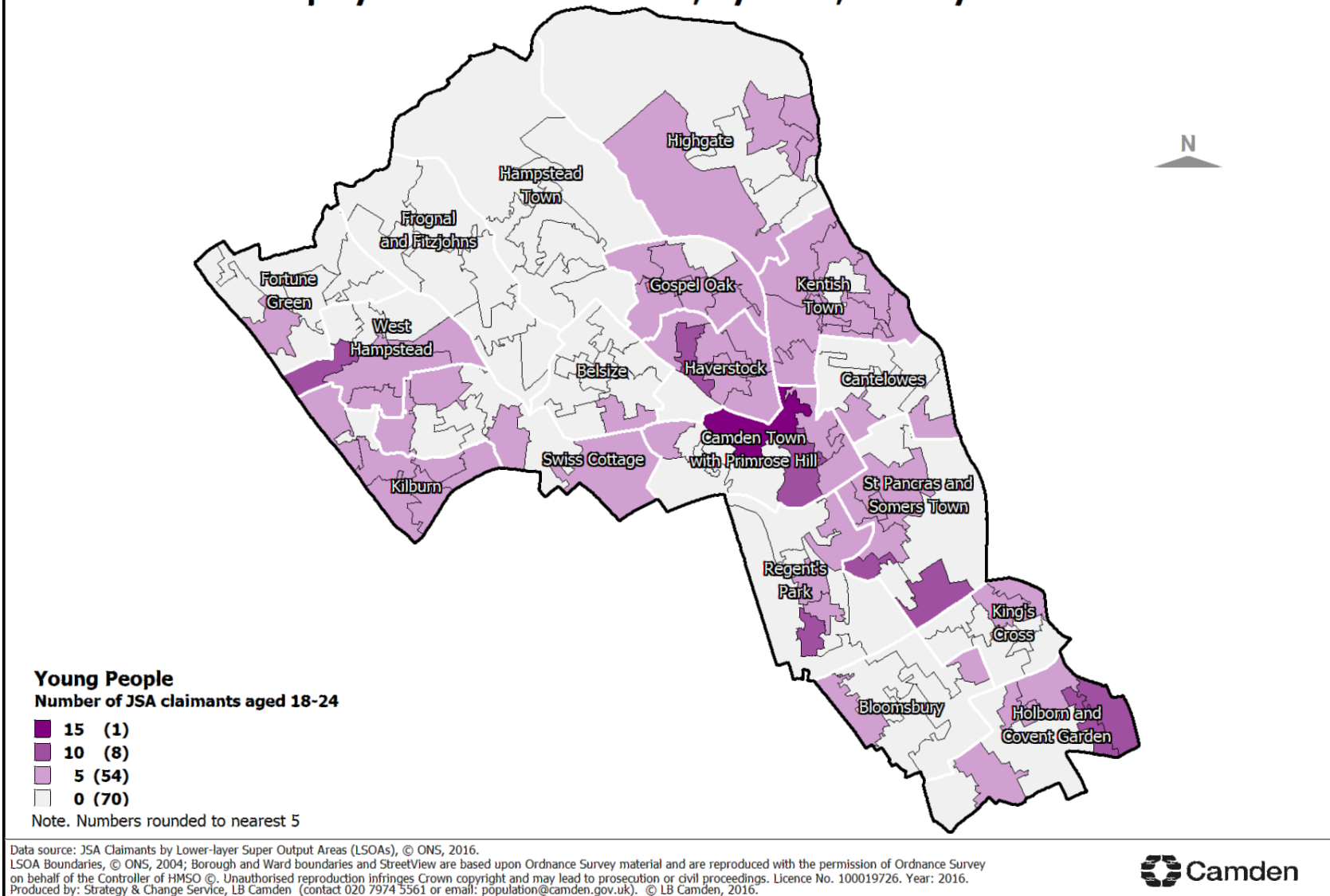
Source: JSA Claimants, © ONS, 2016; GLA MUST, © GLA, 2016.

By Lower Level Super Output Area:



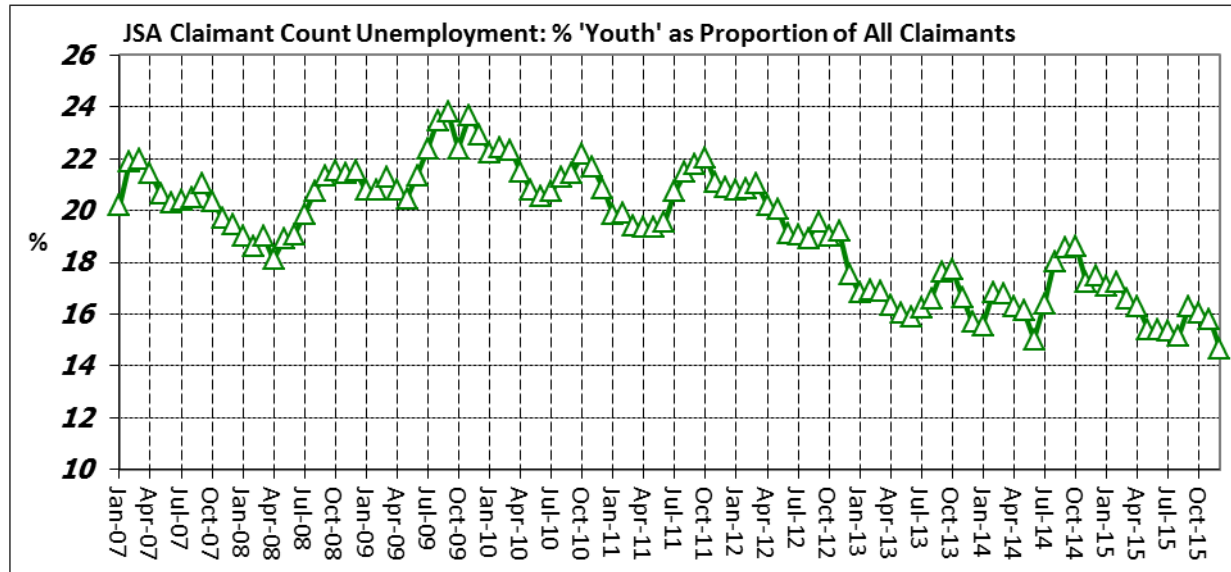
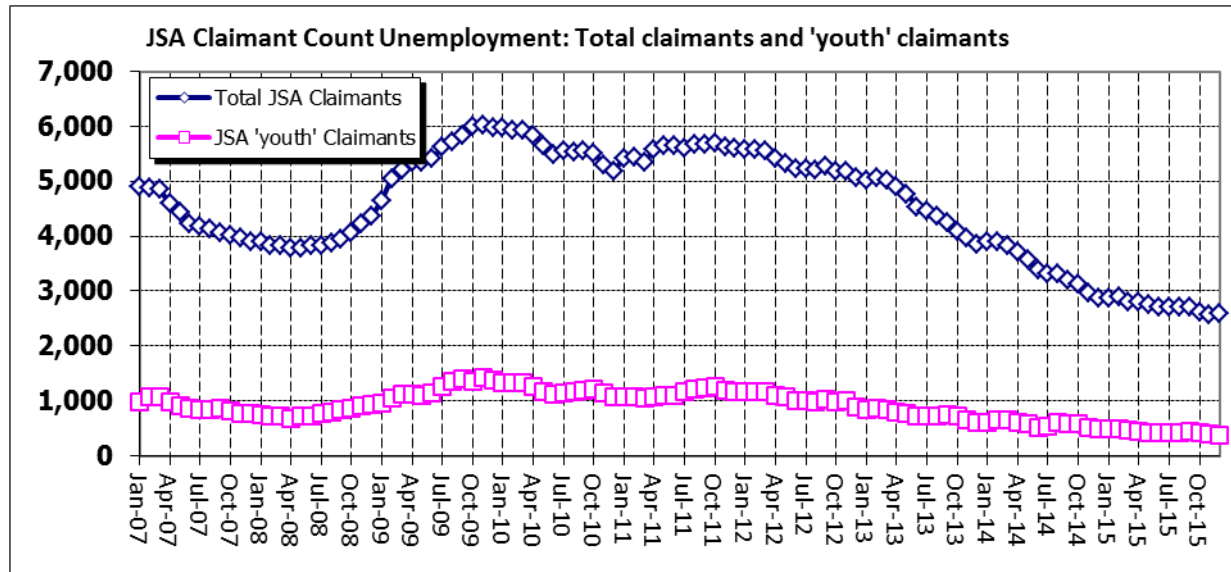
Source: JSA Claimants, © ONS, 2016; GLA MUST, © GLA, 2016.

JSA Claimant Unemployment December 2015, by LSOA, 18-24 year olds



Source: JSA Claimants, © ONS, 2016; GLA MUST, © GLA, 2016.

Younger Claimants



Source: JSA Claimants , © ONS, 2015; GLA MUST, © GLA, 2016.