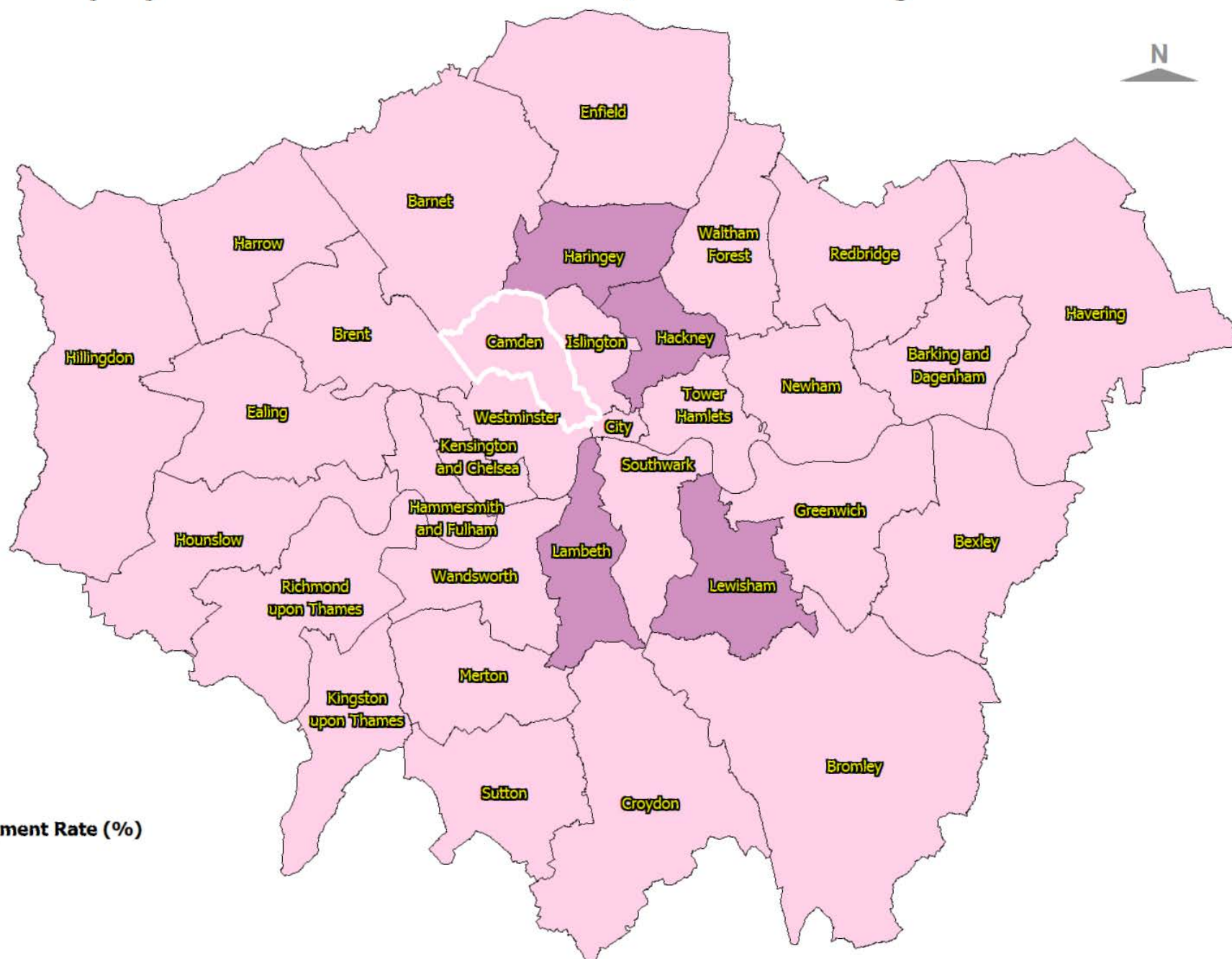


# JSA Claimant Unemployment Rate December 2015, London Boroughs



## JSA Claimant Unemployment Rate (%)

- 7% & Over (0)
- 5% to 7% (0)
- 3% to 5% (4)
- Under 3% (29)

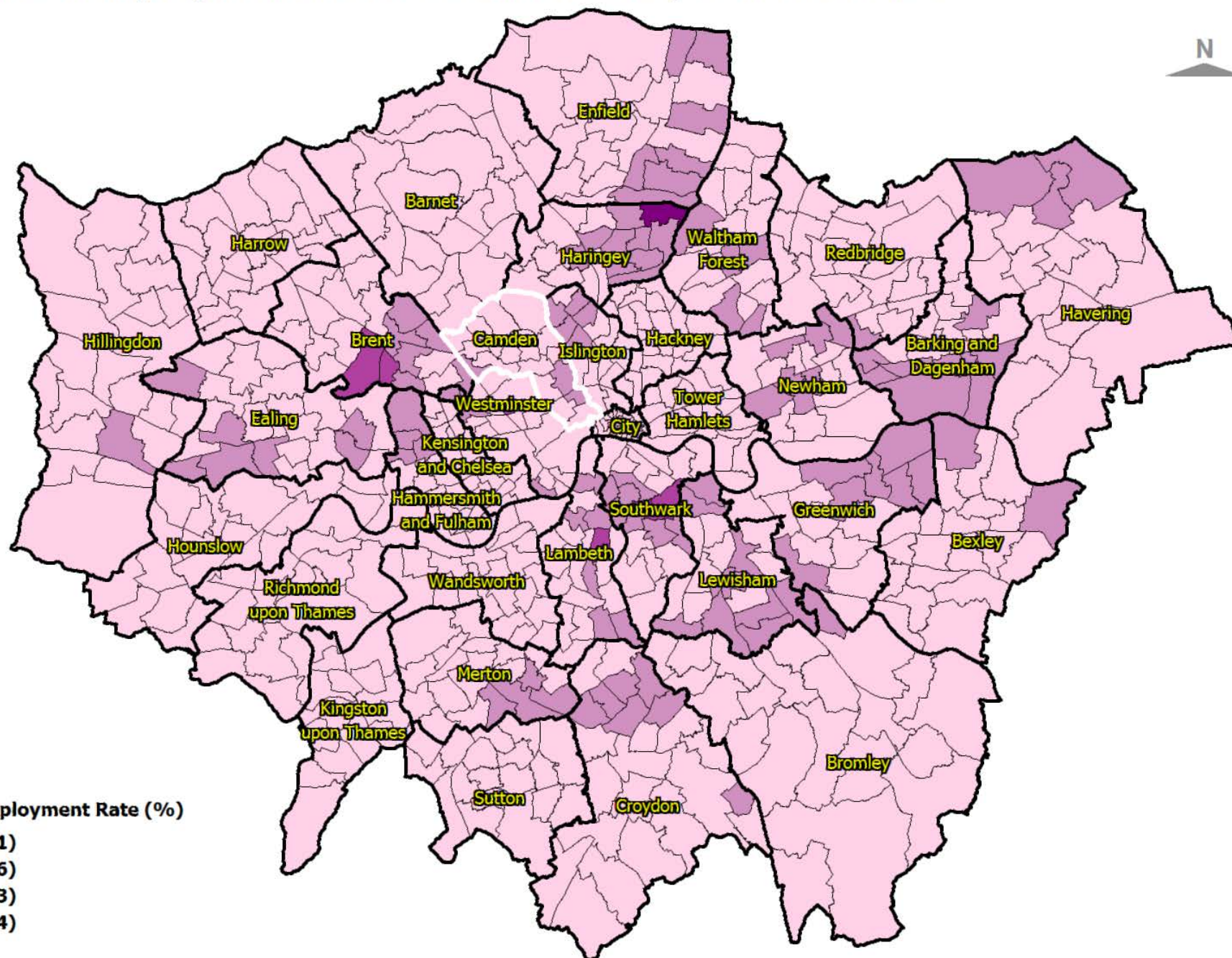
Data sources: GLA Monthly Unemployment Statistical Tables (© GLA 2016).

Boundaries: Borough and Ward boundaries are based upon Ordnance Survey material and are reproduced with the permission of Ordnance Survey on behalf of the Controller of HMSO ©. Unauthorised reproduction infringes Crown copyright and may lead to prosecution or civil proceedings. Licence No. 100019726. Year: 2016.

Produced by: Strategy & Change Service, LB Camden (contact 020 7974 5561 or email: [population@camden.gov.uk](mailto:population@camden.gov.uk)). © LB Camden, 2016.



# JSA Claimant Unemployment Rate December 2015, London Wards



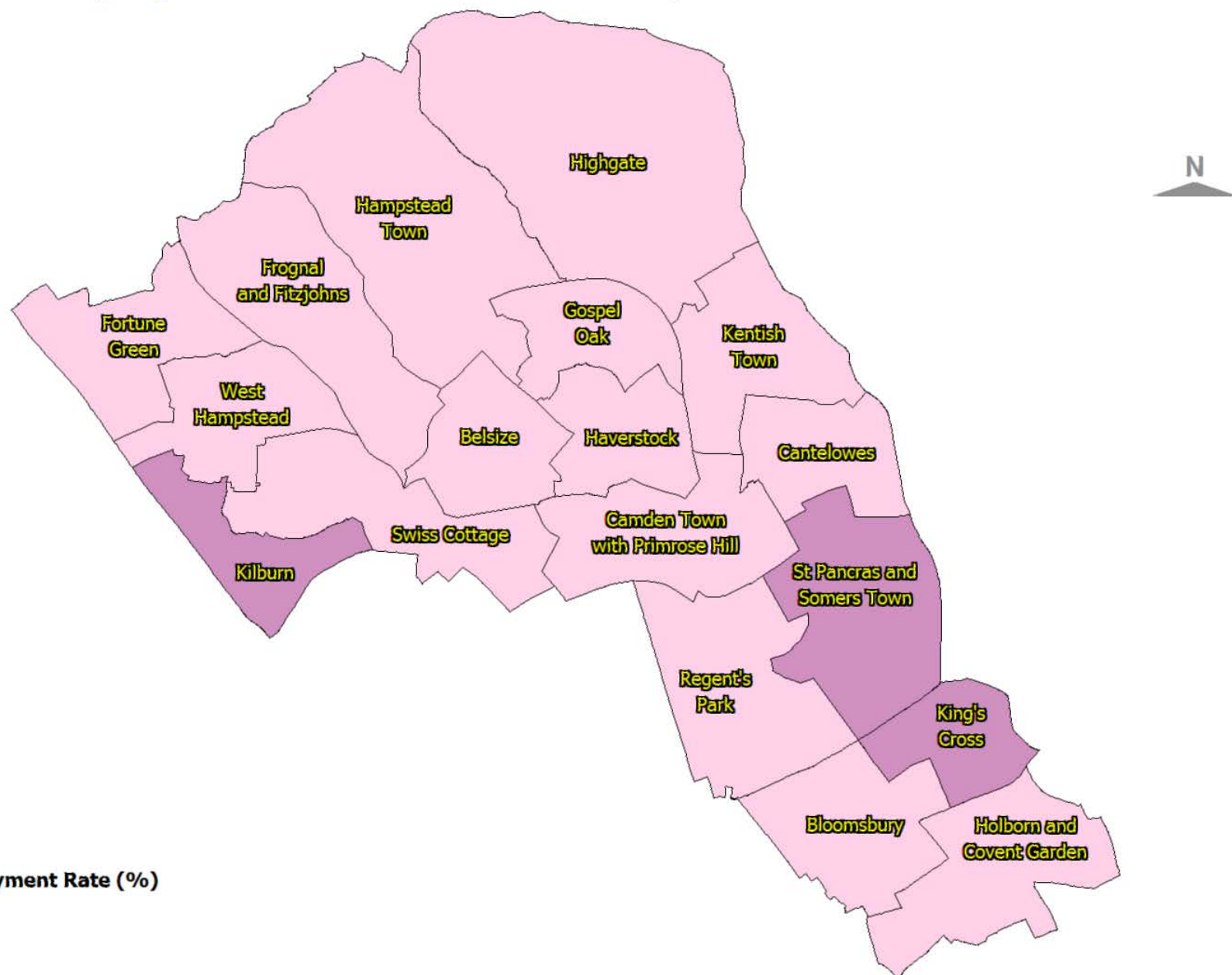
## JSA Claimant Unemployment Rate (%)

- 7% & Over (1)
- 5% to 7% (6)
- 3% to 5% (113)
- Under 3% (534)

Data sources: GLA Monthly Unemployment Statistical Tables (© GLA 2016).

Boundaries: Borough and Ward boundaries are based upon Ordnance Survey material and are reproduced with the permission of Ordnance Survey on behalf of the Controller of HMSO ©. Unauthorised reproduction infringes Crown copyright and may lead to prosecution or civil proceedings. Licence No. 100019726. Year: 2016.  
 Produced by: Strategy & Change Service, LB Camden (contact 020 7974 5561 or email: [population@camden.gov.uk](mailto:population@camden.gov.uk)). © LB Camden, 2016.

# JSA Claimant Unemployment Rate December 2015, Camden Wards



## JSA Claimant Unemployment Rate (%)

- 7% & Over (0)
- 5% to 7% (0)
- 3% to 5% (3)
- Under 3% (15)

Data sources: GLA Monthly Unemployment Statistical Tables (© LB Camden 2016).

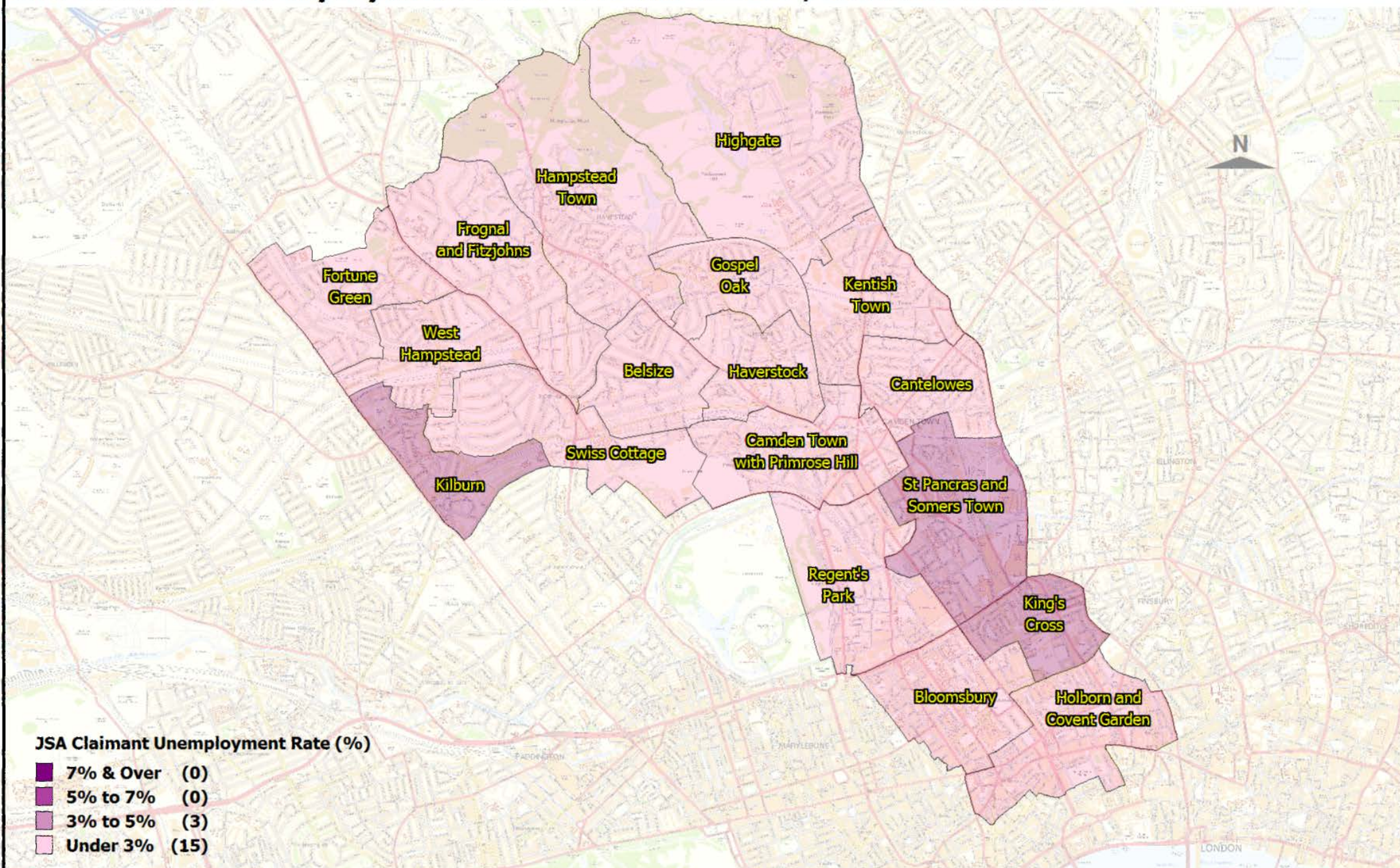
Boundaries: Borough and Ward boundaries are based upon Ordnance Survey material and are reproduced with the permission of Ordnance Survey

on behalf of the Controller of HMSO ©. Unauthorised reproduction infringes Crown copyright and may lead to prosecution or civil proceedings. Licence No. 100019726. Year: 2016.

Produced by: Strategy & Change Service, LB Camden (contact 020 7974 5561 or email: [population@camden.gov.uk](mailto:population@camden.gov.uk)), © LB Camden, 2016.



# JSA Claimant Unemployment Rate December 2015, Camden Wards



Data sources: GLA Monthly Unemployment Statistical Tables (© LB Camden 2016).

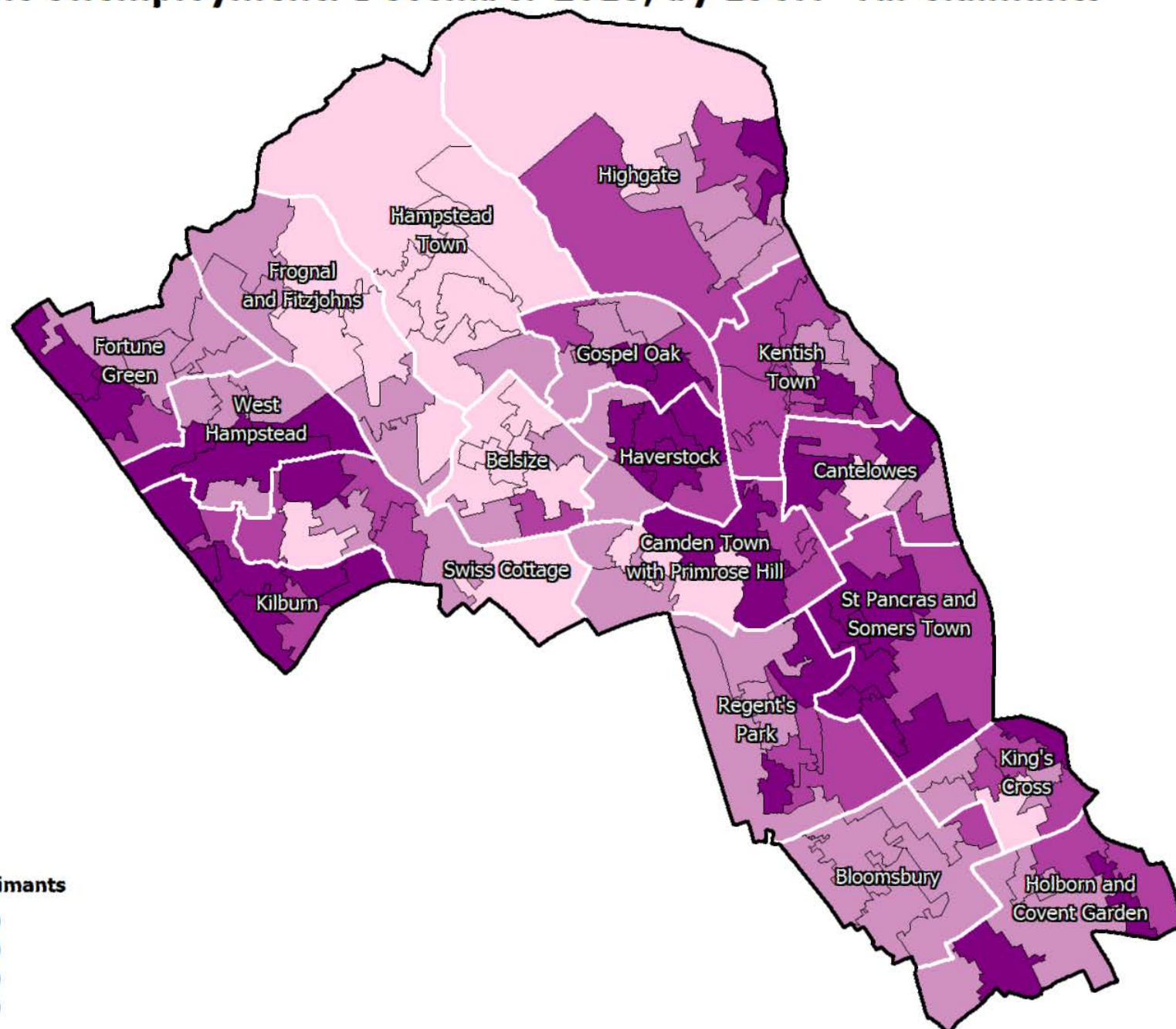
Boundaries: Borough and Ward boundaries are based upon Ordnance Survey material and are reproduced with the permission of Ordnance Survey

on behalf of the Controller of HMSO ©. Unauthorised reproduction infringes Crown copyright and may lead to prosecution or civil proceedings. Licence No. 100019726. Year: 2016.

Produced by: Strategy & Change Service, LB Camden (contact 020 7974 5561 or email: [population@camden.gov.uk](mailto:population@camden.gov.uk)), © LB Camden, 2016.



# JSA Claimant Unemployment: December 2015, by LSOA - All Claimants



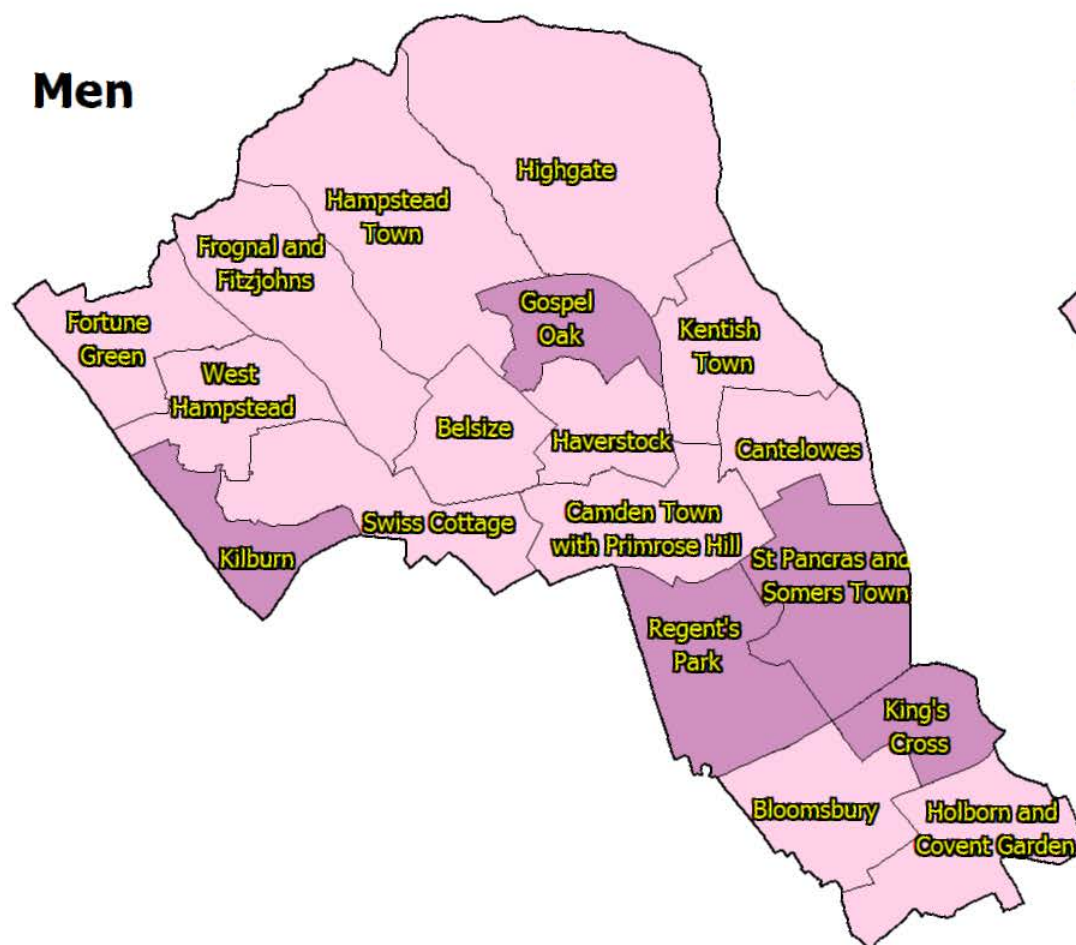
Data source: JSA Claimants by Lower-layer Super Output Areas (LSOAs), © ONS, 2016.

LSOA Boundaries, © ONS, 2004; Borough and Ward boundaries and StreetView are based upon Ordnance Survey material and are reproduced with the permission of Ordnance Survey on behalf of the Controller of HMSO ©. Unauthorised reproduction infringes Crown copyright and may lead to prosecution or civil proceedings. Licence No. 100019726. Year: 2016. Produced by: Strategy & Change Service, LB Camden (contact 020 7974 5561 or email: [population@camden.gov.uk](mailto:population@camden.gov.uk)). © LB Camden, 2015.

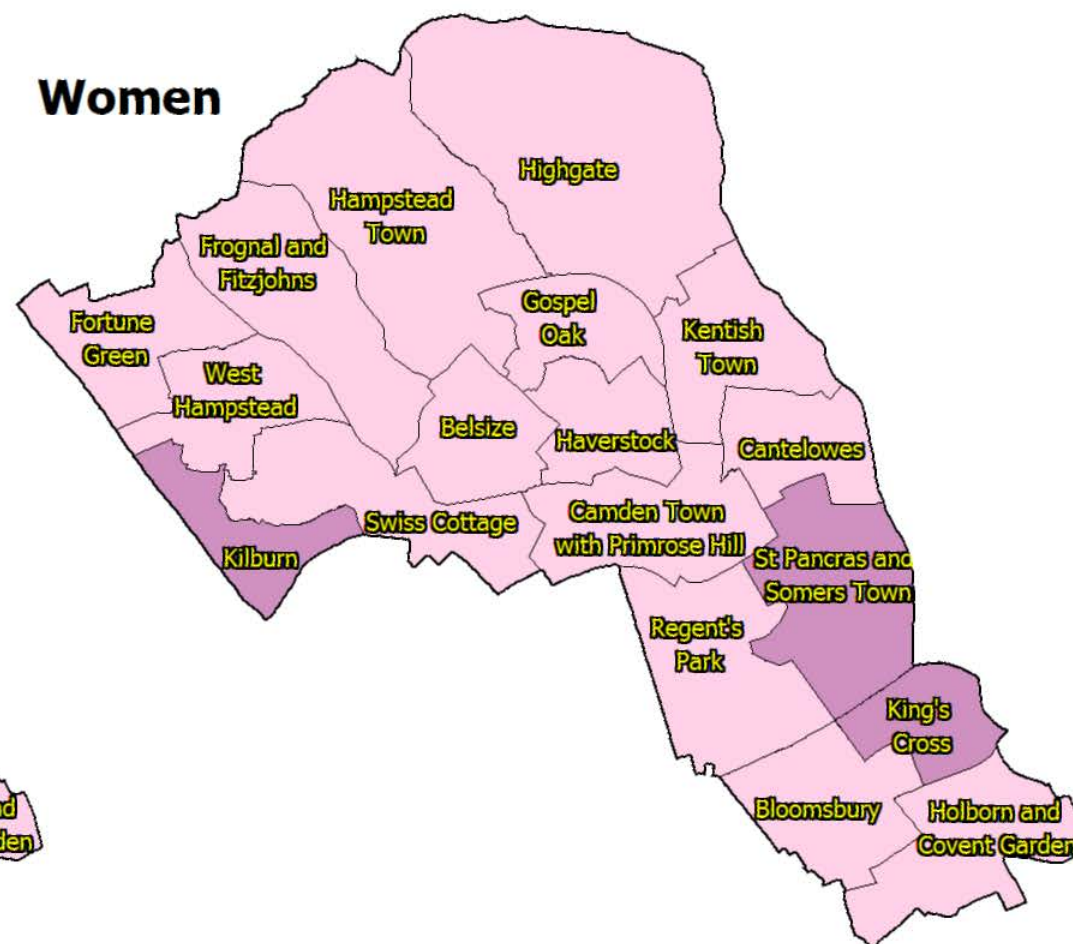
# Claimant Unemployment Rate December 2015, Camden Wards



## Men



## Women



### JSA Claimant Unemployment Rate (%)

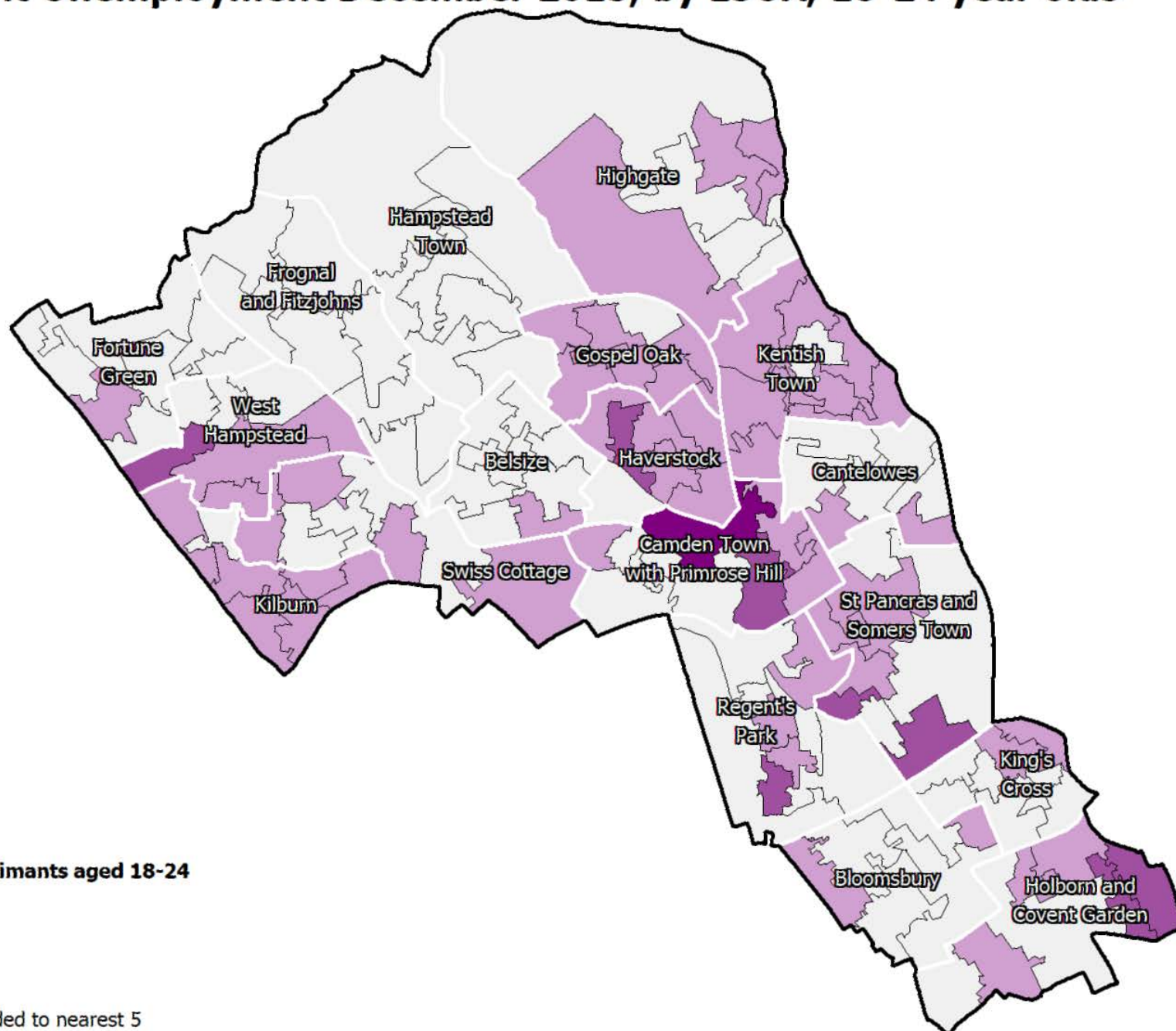
- 7% & Over (0)
- 5% to 7% (0)
- 3% to 5% (5)
- Under 3% (13)

Data sources: GLA Monthly Unemployment Statistical Tables (© GLA, 2016).

Boundaries: Borough and Ward boundaries are based upon Ordnance Survey material and are reproduced with the permission of Ordnance Survey on behalf of the Controller of HMSO ©. Unauthorised reproduction infringes Crown copyright and may lead to prosecution or civil proceedings. Licence No. 100019726. Year: 2016.  
Produced by: Strategy & Change Service, LB Camden (contact 020 7974 5561 or email: [population@camden.gov.uk](mailto:population@camden.gov.uk)), © LB Camden, 2016.



# JSA Claimant Unemployment December 2015, by LSOA, 18-24 year olds



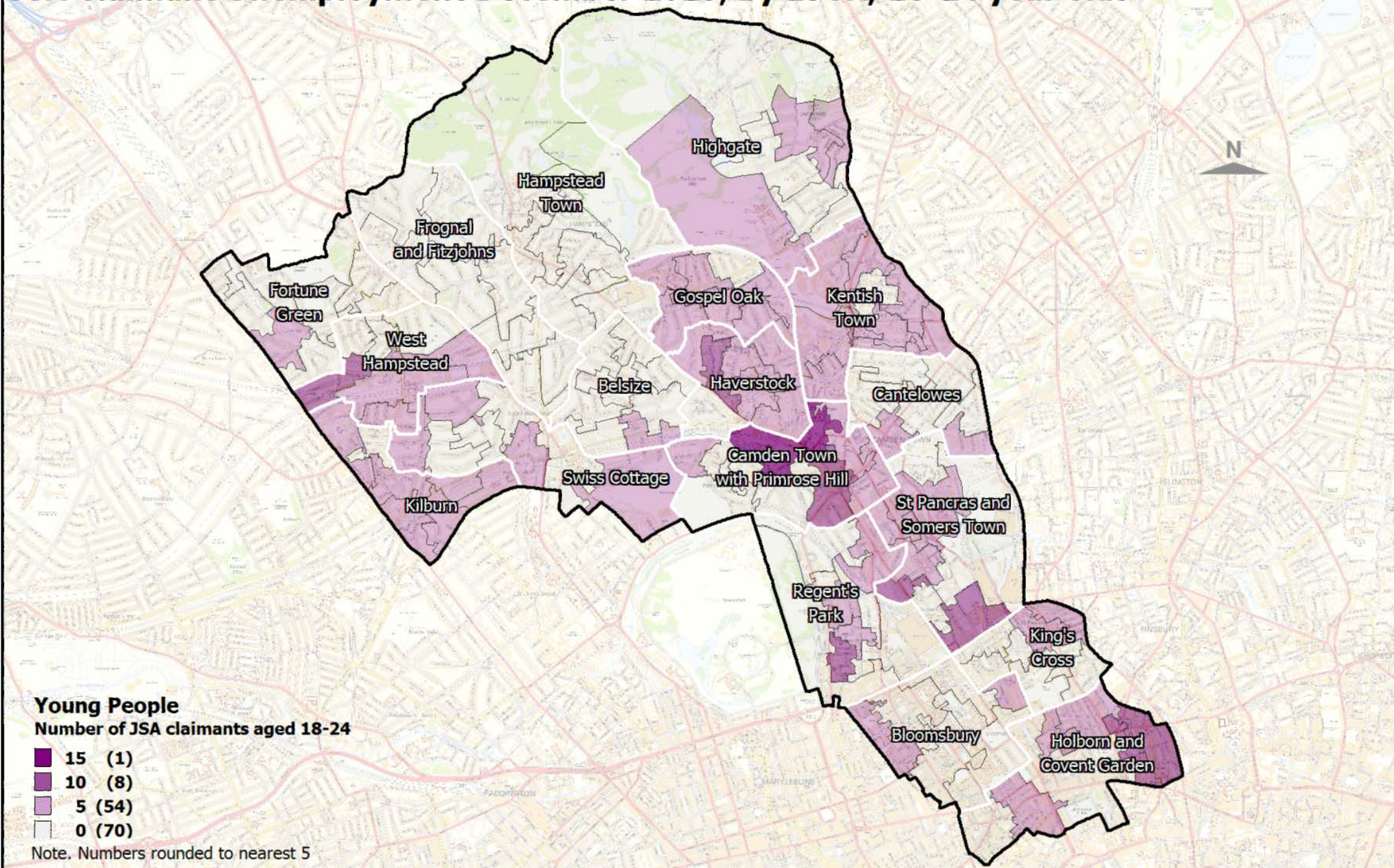
Data source: JSA Claimants by Lower-layer Super Output Areas (LSOAs), © ONS, 2016.

LSOA Boundaries, © ONS, 2004; Borough and Ward boundaries and StreetView are based upon Ordnance Survey material and are reproduced with the permission of Ordnance Survey on behalf of the Controller of HMSO ©. Unauthorised reproduction infringes Crown copyright and may lead to prosecution or civil proceedings. Licence No. 100019726. Year: 2016.

Produced by: Strategy & Change Service, LB Camden (contact 020 7974 5561 or email: [population@camden.gov.uk](mailto:population@camden.gov.uk)). © LB Camden, 2016.



# JSA Claimant Unemployment December 2015, by LSOA, 18-24 year olds

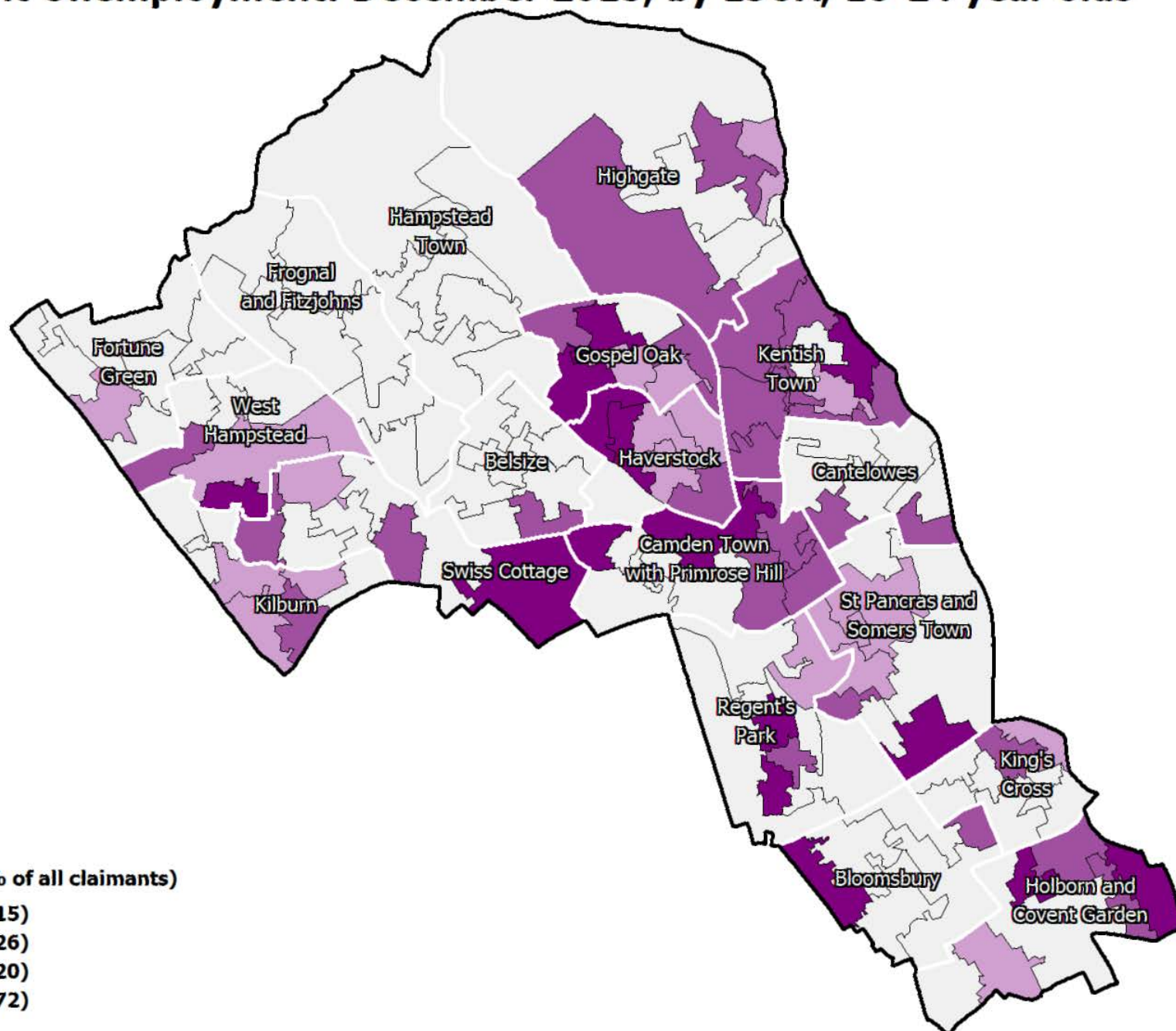


Data source: JSA Claimants by Lower-layer Super Output Areas (LSOAs), © ONS, 2016.

LSOA Boundaries, © ONS, 2004; Borough and Ward boundaries and StreetView are based upon Ordnance Survey material and are reproduced with the permission of Ordnance Survey on behalf of the Controller of HMSO ©. Unauthorised reproduction infringes Crown copyright and may lead to prosecution or civil proceedings. Licence No. 100019726. Year: 2016. Produced by: Strategy & Change Service, LB Camden (contact 020 7974 5561 or email: [population@camden.gov.uk](mailto:population@camden.gov.uk)). © LB Camden, 2016.



# JSA Claimant Unemployment: December 2015, by LSOA, 18-24 year olds

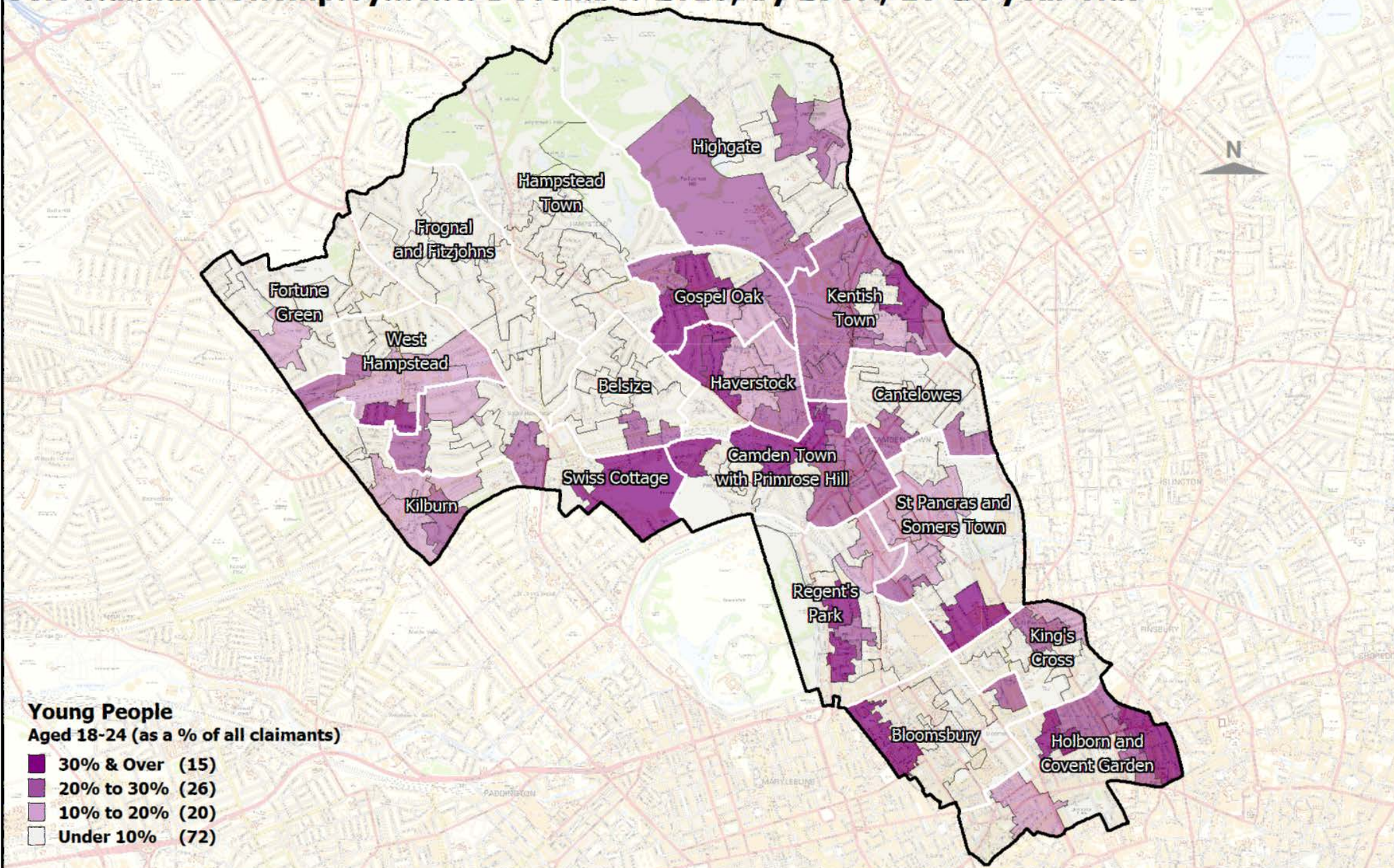


Data source: JSA Claimant Unemployment by Lower-layer Super output Areas (LSOAs), © ONS, 2016.

LSOA Boundaries, © ONS, 2004; Borough and Ward boundaries and StreetView are based upon Ordnance Survey material and are reproduced with the permission of Ordnance Survey on behalf of the Controller of HMSO ©. Unauthorised reproduction infringes Crown copyright and may lead to prosecution or civil proceedings. Licence No. 100019726. Year: 2016. Produced by: Strategy & Change Service, LB Camden (contact 020 7974 5561 or email: [population@camden.gov.uk](mailto:population@camden.gov.uk)). © LB Camden, 2016.



# JSA Claimant Unemployment: December 2015, by LSOA, 18-24 year olds



Data source: JSA Claimant Unemployment by Lower-layer Super output Areas (LSOAs), © ONS, 2016.

LSOA Boundaries, © ONS, 2004; Borough and Ward boundaries and StreetView are based upon Ordnance Survey material and are reproduced with the permission of Ordnance Survey on behalf of the Controller of HMSO ©. Unauthorised reproduction infringes Crown copyright and may lead to prosecution or civil proceedings. Licence No. 100019726. Year: 2016. Produced by: Strategy & Change Service, LB Camden (contact 020 7974 5561 or email: [population@camden.gov.uk](mailto:population@camden.gov.uk)). © LB Camden, 2016.