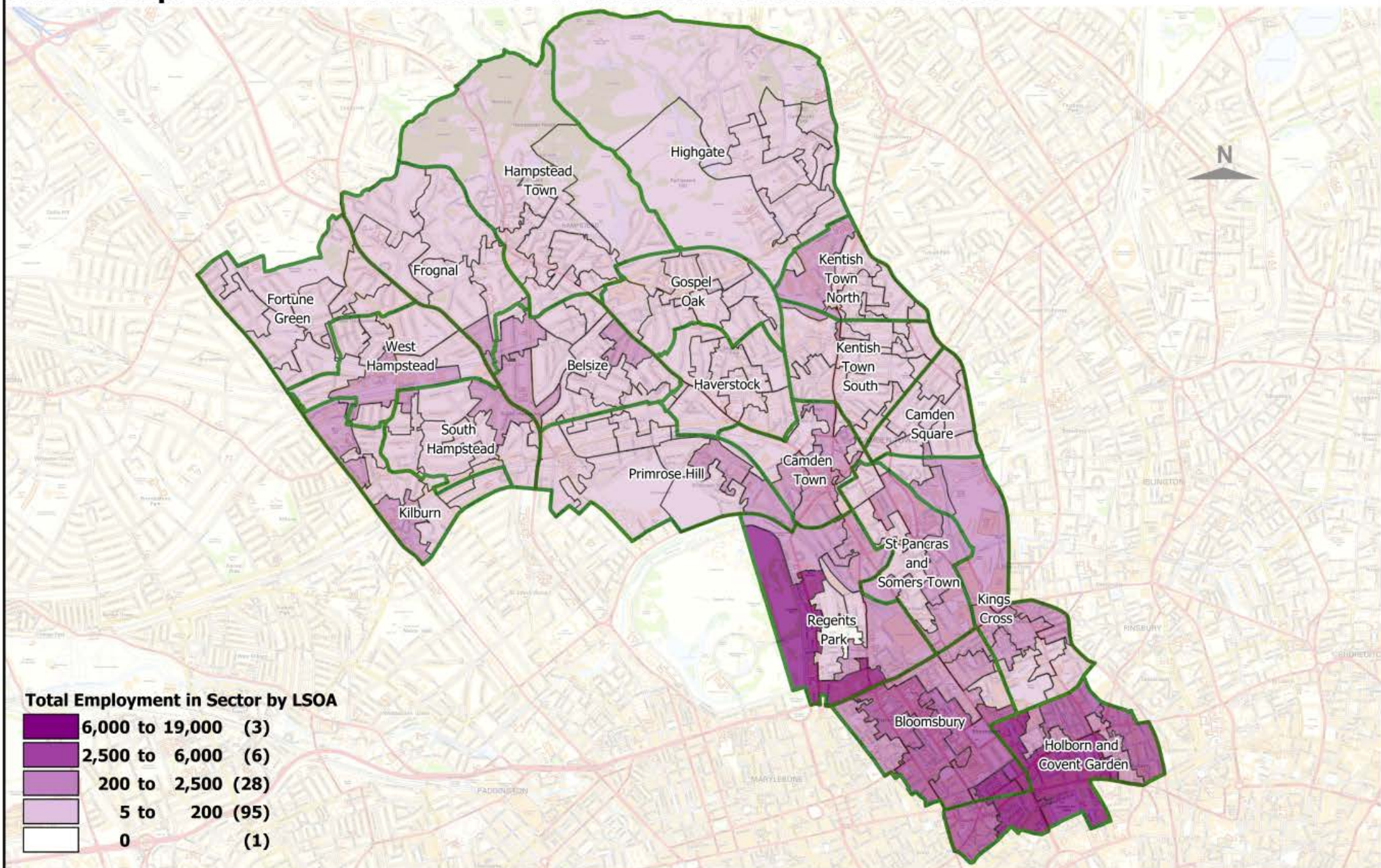
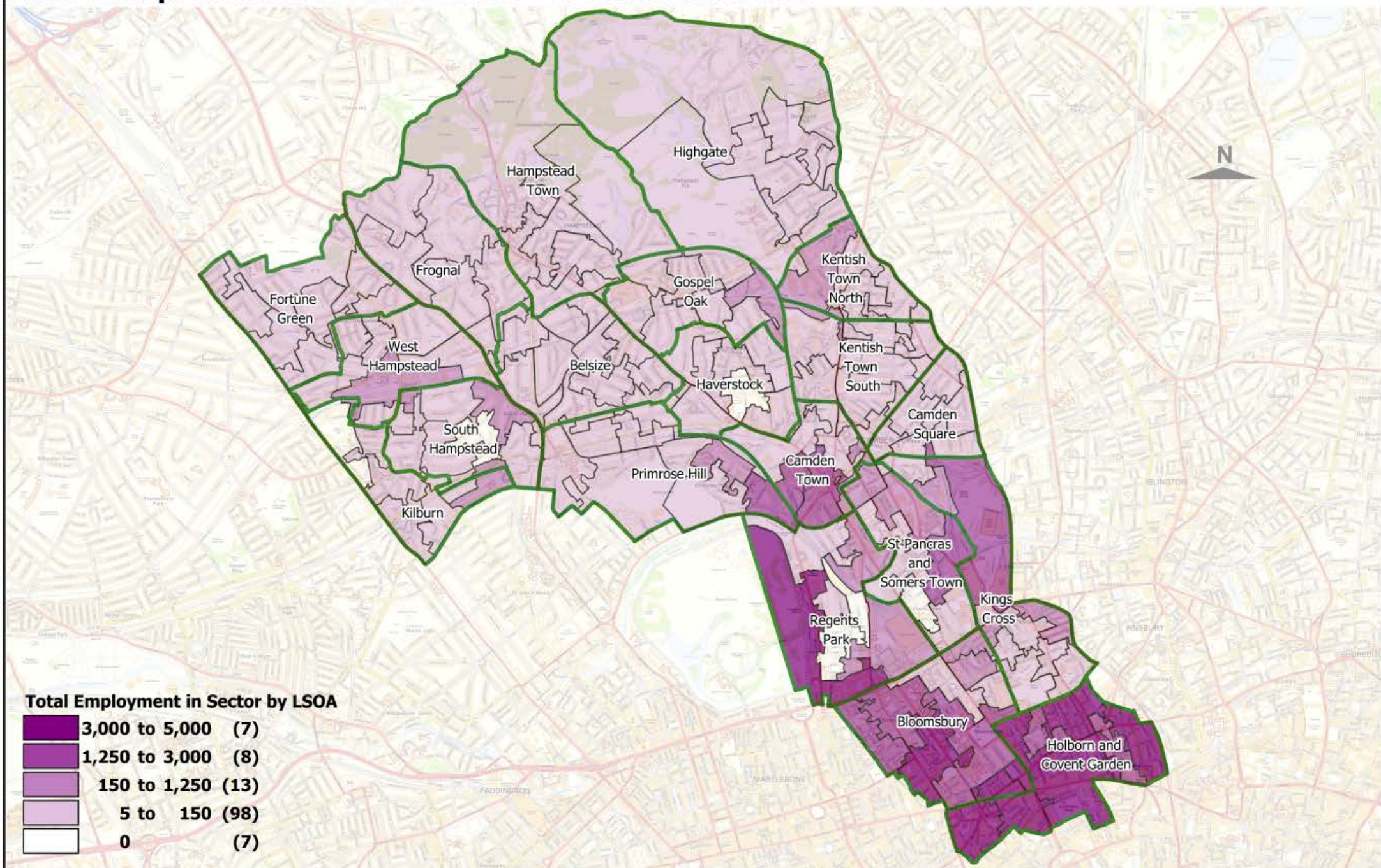


# BRES 2021p: Camden Growth Sectors - Professional & Technical Services



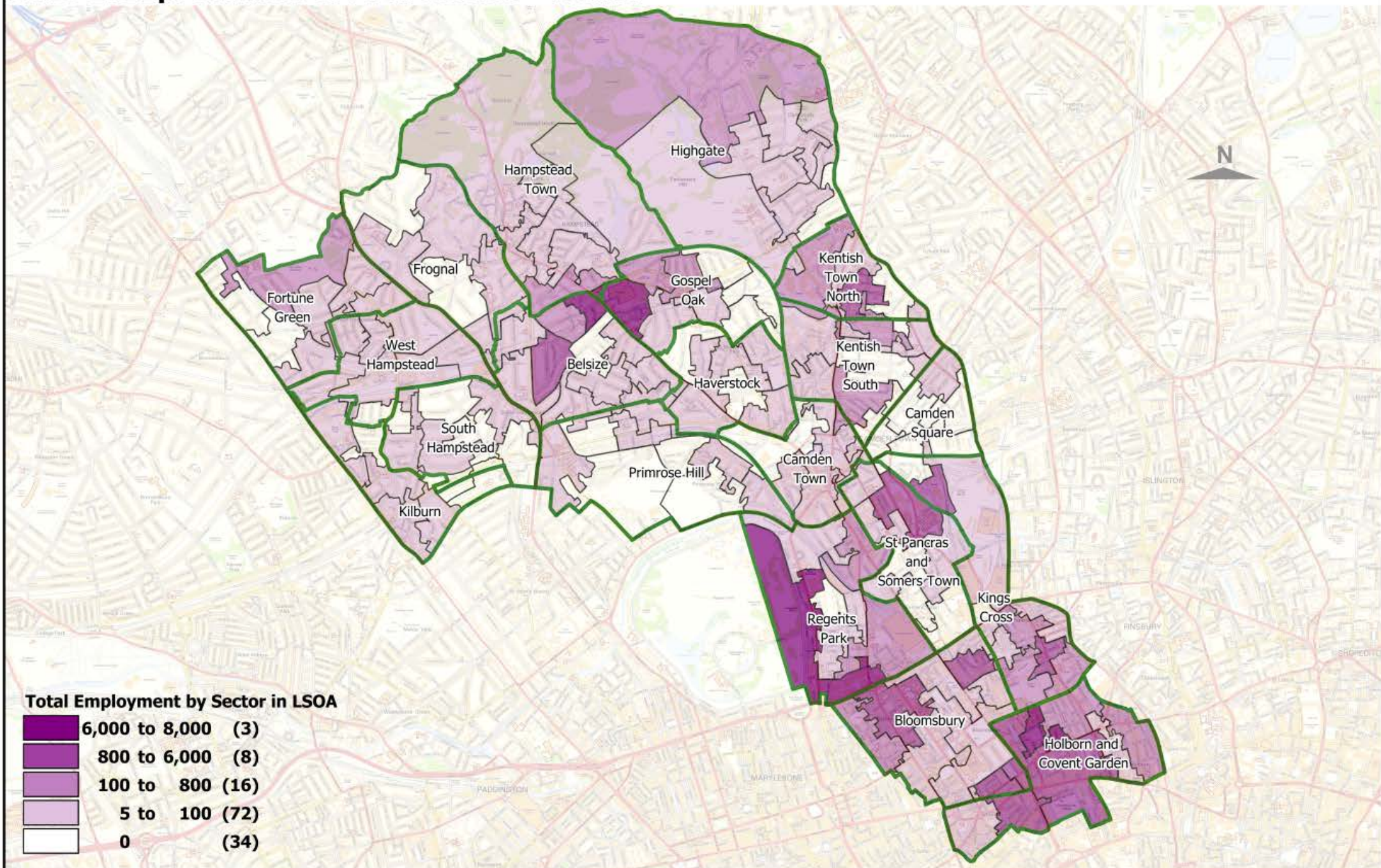


# BRES 2021p: Camden Growth Sectors - Creative Industries



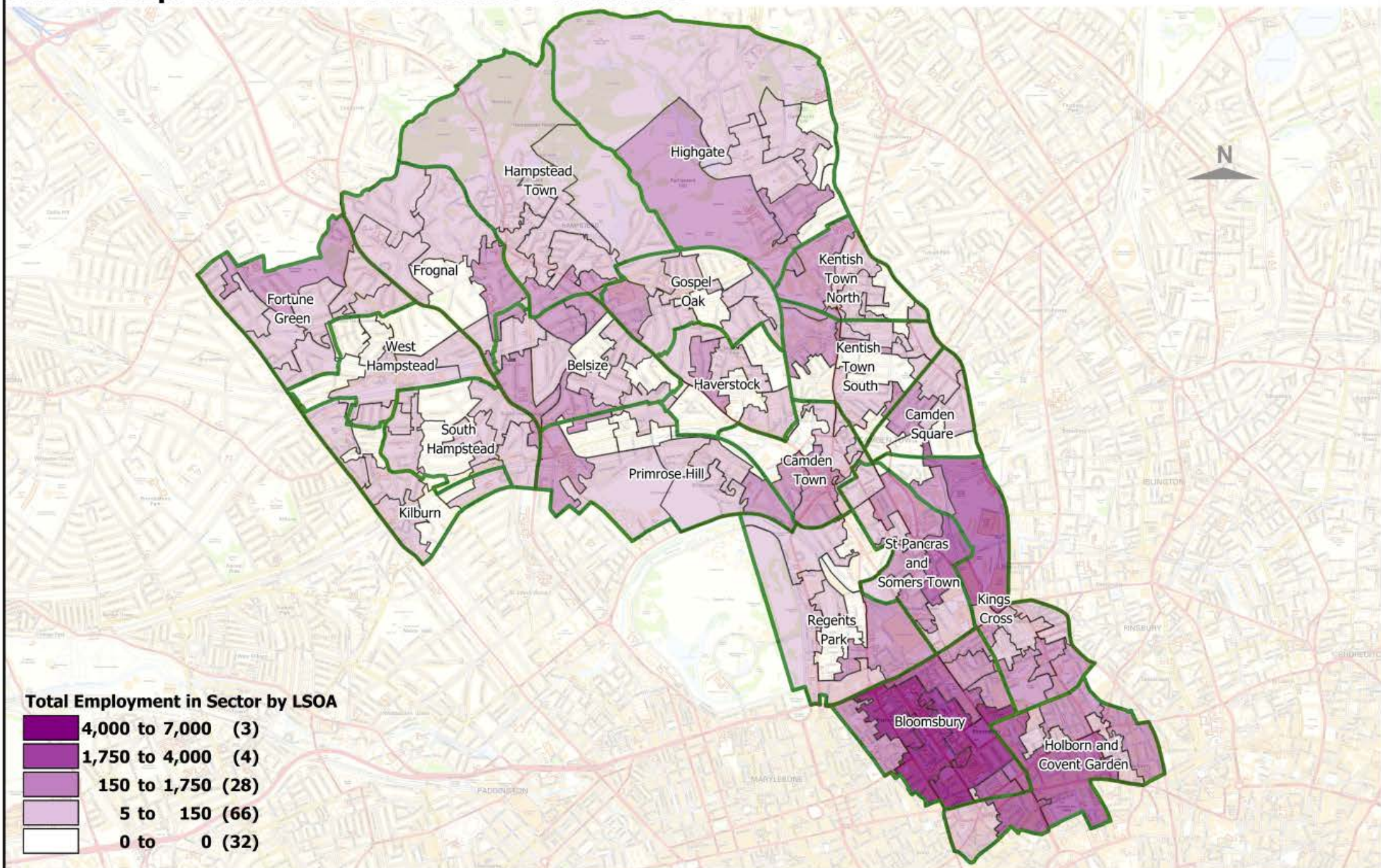


# BRES 2021p: Camden Growth Sectors - Health



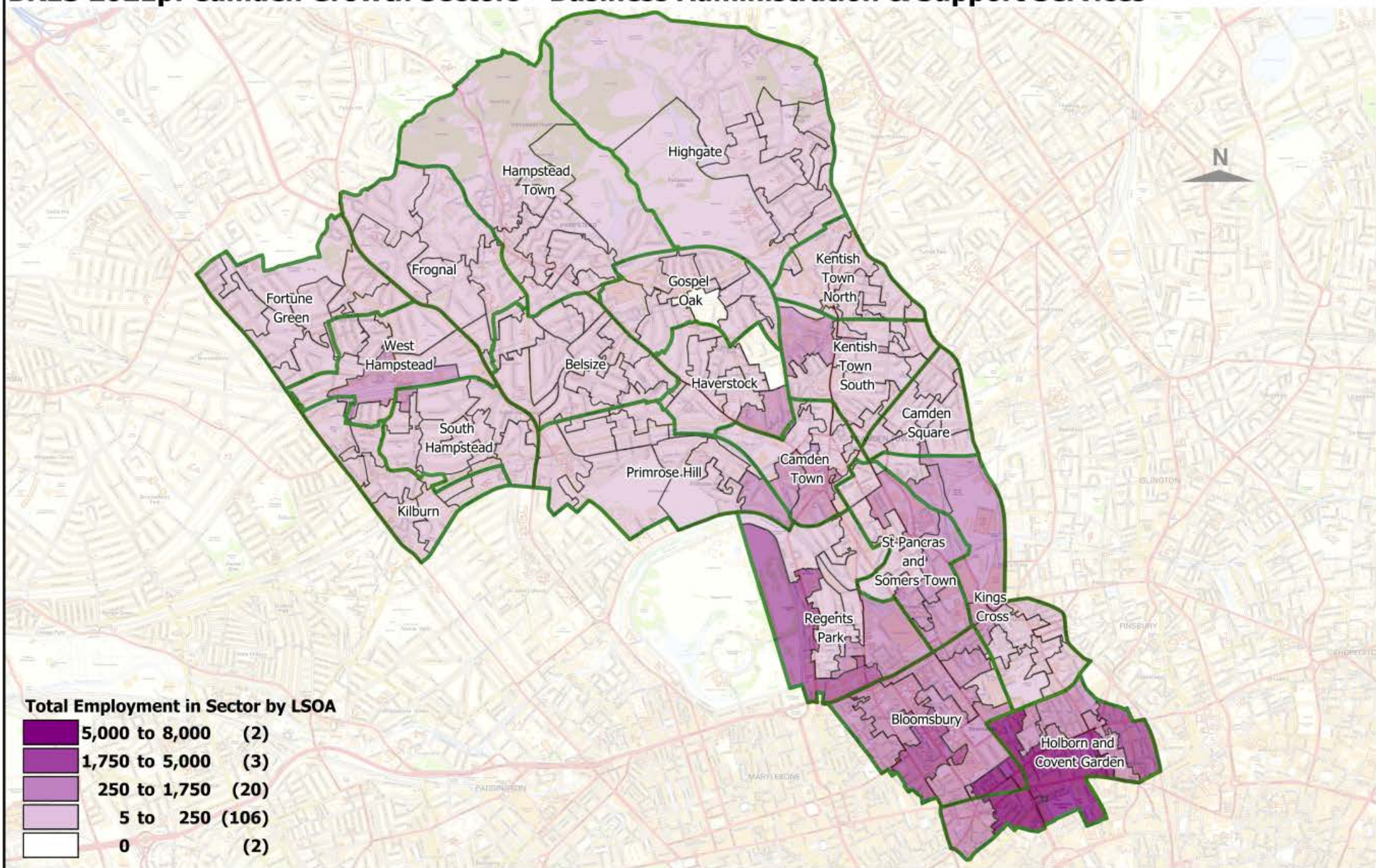


# BRES 2021p: Camden Growth Sectors - Education





# BRES 2021p: Camden Growth Sectors - Business Administration & Support Services



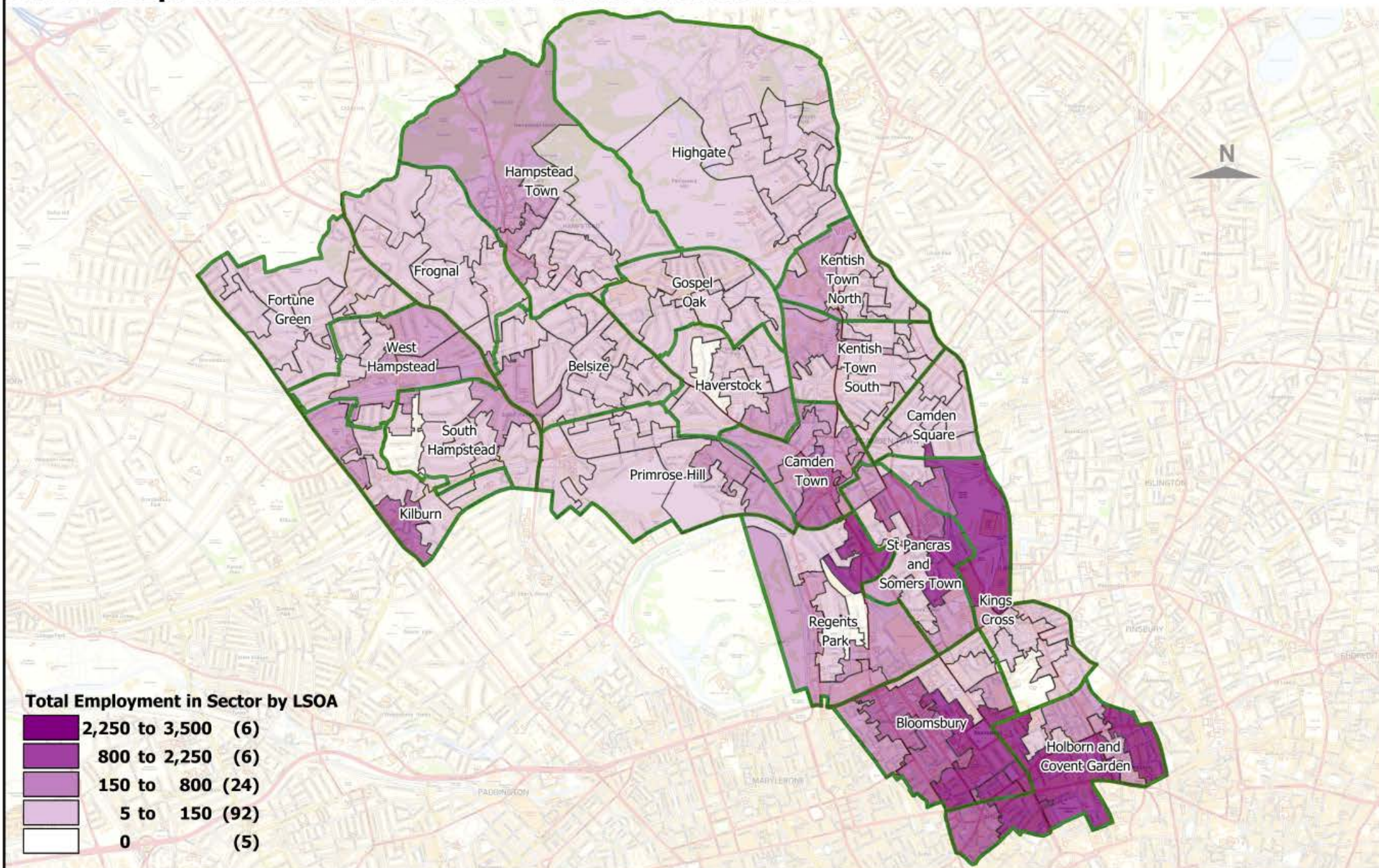
Data source: Business Register & Employment Survey 2021p, © ONS, 2022. Workplace-based total employment: employee-jobs and salaried owners.

Boundaries: This map is based upon Ordnance Survey material with the permission of Ordnance Survey on behalf of the Controller of Her Majesty's Stationery Office ©. Unauthorised reproduction infringes Crown copyright and may lead to prosecution or civil proceedings. Licence No. 100019726. Year: 2022; 2011 Census Statistical Boundaries, © ONS, Crown Copyright.

Produced by: Strategy Family, LB Camden (contact 020 7974 5561 or email: [population@camden.gov.uk](mailto:population@camden.gov.uk)); © LB Camden, 2022



# BRES 2021p: Camden Growth Sectors - Retail & Wholesale



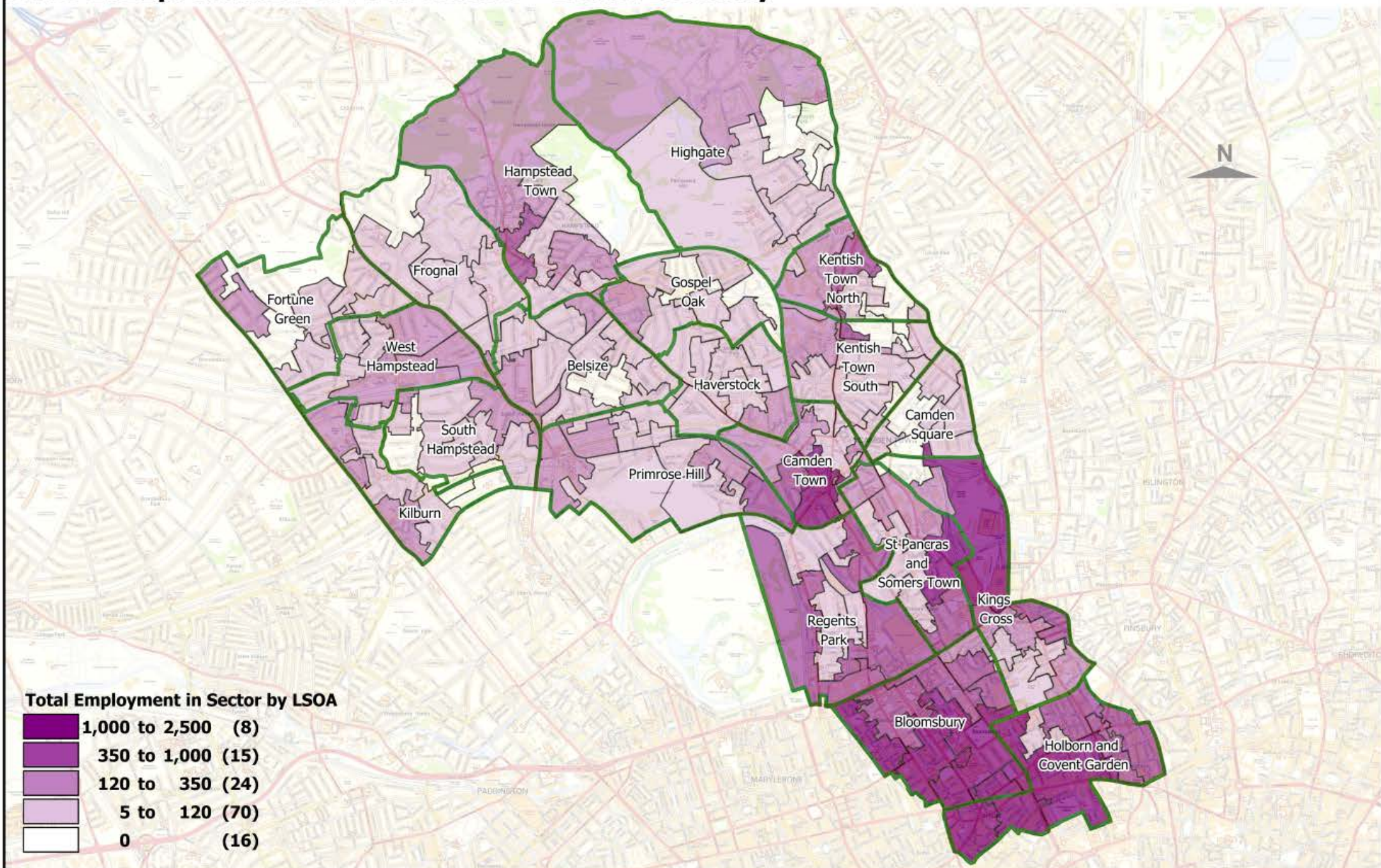
Data source: Business Register & Employment Survey 2021p, © ONS, 2022. Workplace-based total employment: employee-jobs and salaried owners.

Boundaries: This map is based upon Ordnance Survey material with the permission of Ordnance Survey on behalf of the Controller of Her Majesty's Stationery Office ©. Unauthorised reproduction infringes Crown copyright and may lead to prosecution or civil proceedings. Licence No. 100019726. Year: 2022; 2011 Census Statistical Boundaries, © ONS, Crown Copyright.

Produced by: Strategy Family, LB Camden (contact 020 7974 5561 or email: [population@camden.gov.uk](mailto:population@camden.gov.uk)); © LB Camden, 2022



# BRES 2021p: Camden Growth Sectors - Visitor Economy



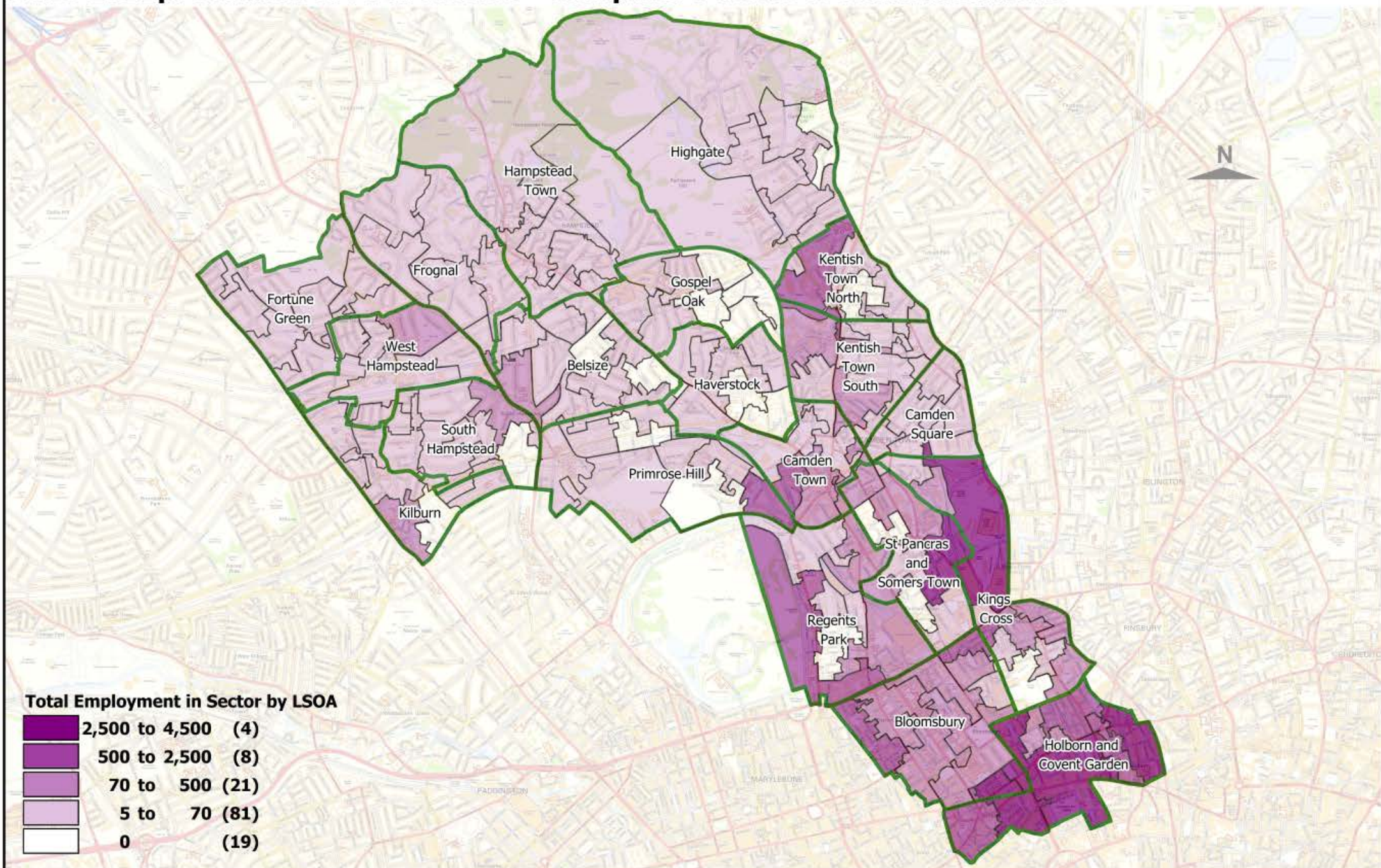
Data source: Business Register & Employment Survey 2021p, © ONS, 2022. Workplace-based total employment: employee-jobs and salaried owners.

Boundaries: This map is based upon Ordnance Survey material with the permission of Ordnance Survey on behalf of the Controller of Her Majesty's Stationery Office ©. Unauthorised reproduction infringes Crown copyright and may lead to prosecution or civil proceedings. Licence No. 100019726. Year: 2022; 2011 Census Statistical Boundaries, © ONS, Crown Copyright.

Produced by: Strategy Family, LB Camden (contact 020 7974 5561 or email: [population@camden.gov.uk](mailto:population@camden.gov.uk)); © LB Camden, 2022



# BRES 2021p: Camden Growth Sectors - Computer Science & Communications



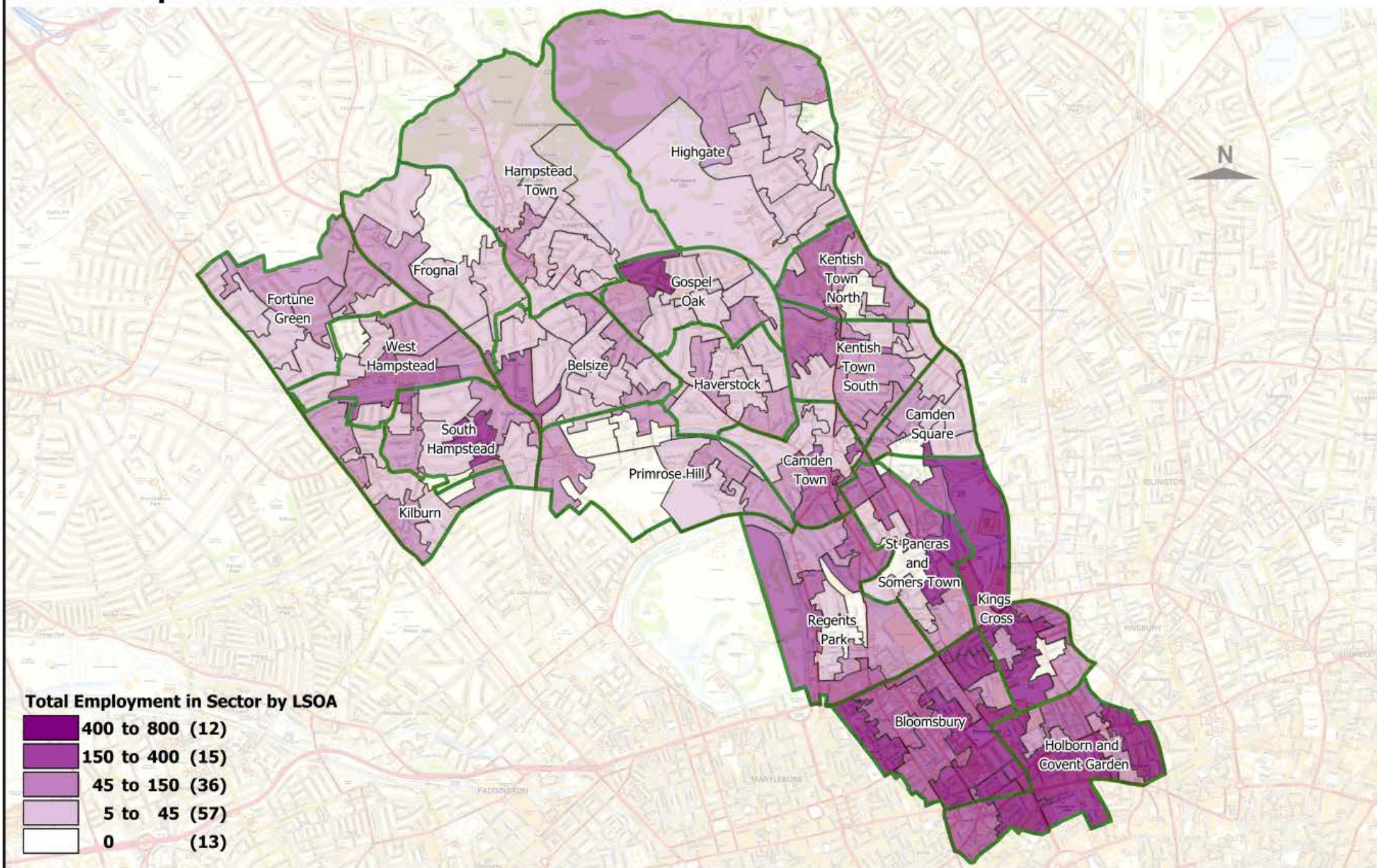
Data source: Business Register & Employment Survey 2021p, © ONS, 2022. Workplace-based total employment: employee-jobs and salaried owners.

Boundaries: This map is based upon Ordnance Survey material with the permission of Ordnance Survey on behalf of the Controller of Her Majesty's Stationery Office ©. Unauthorised reproduction infringes Crown copyright and may lead to prosecution or civil proceedings. Licence No. 100019726. Year: 2022; 2011 Census Statistical Boundaries, © ONS, Crown Copyright.

Produced by: Strategy Family, LB Camden (contact 020 7974 5561 or email: [population@camden.gov.uk](mailto:population@camden.gov.uk)); © LB Camden, 2022

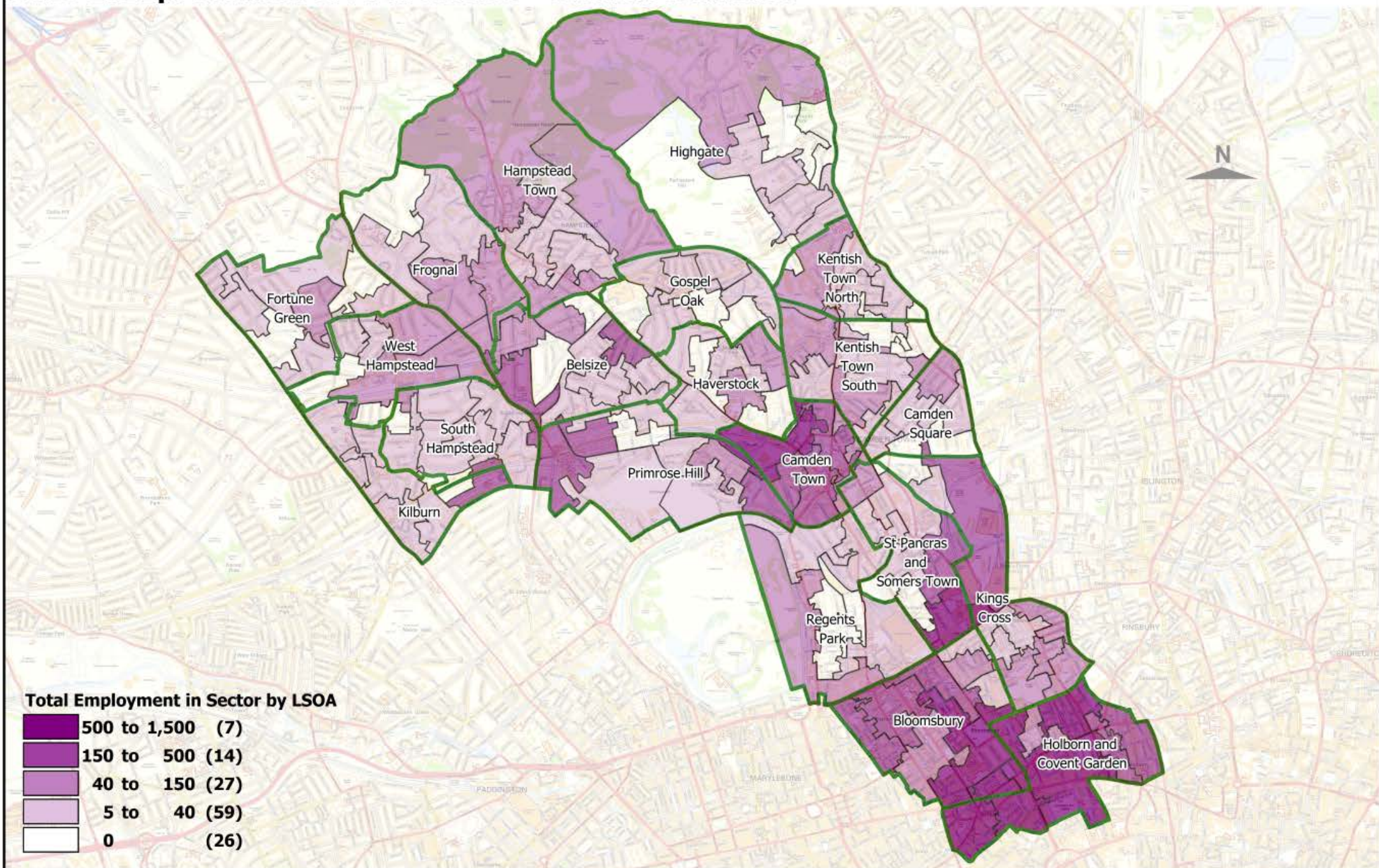


# BRES 2021p: Camden Growth Sectors - Personal Services



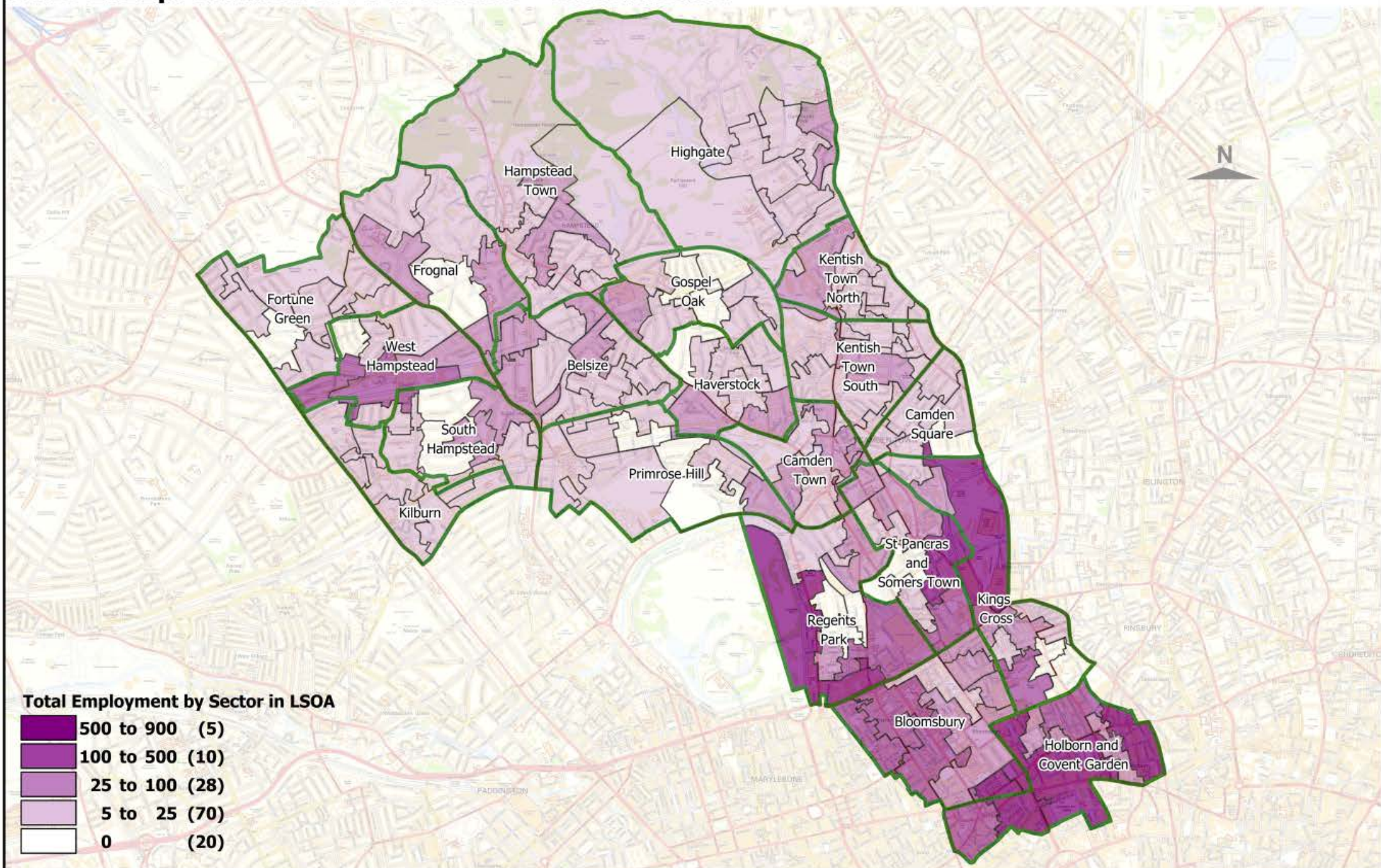


# BRES 2021p: Camden Growth Sectors - Cultural Activities





# BRES 2021p: Camden Growth Sectors - Construction



Data source: Business Register & Employment Survey 2021p, © ONS, 2022. Workplace-based total employment: employee-jobs and salaried owners.

Boundaries: This map is based upon Ordnance Survey material with the permission of Ordnance Survey on behalf of the Controller of Her Majesty's Stationery Office ©. Unauthorised reproduction infringes Crown copyright and may lead to prosecution or civil proceedings. Licence No. 100019726. Year: 2022; 2011 Census Statistical Boundaries, © ONS, Crown Copyright.

Produced by: Strategy Family, LB Camden (contact 020 7974 5561 or email: [population@camden.gov.uk](mailto:population@camden.gov.uk)); © LB Camden, 2022



# BRES 2021p: Camden Growth Sectors - Scientific Research & Development

