

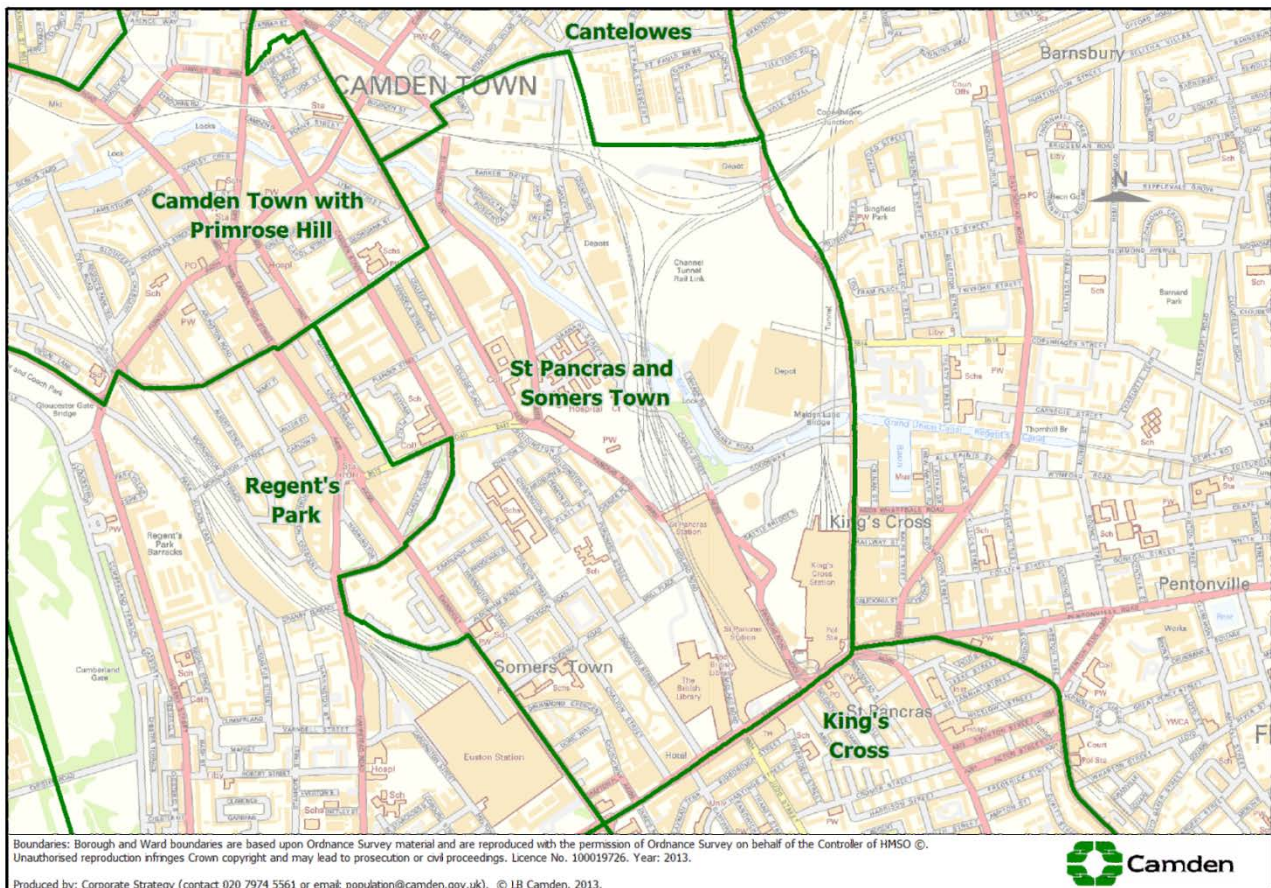
St Pancras and Somers Town Ward

The most detailed profile of St Pancras and Somers Town ward is from the 2011 Census ([2011 Census Profiles](#))¹. This profile updates information that is available between censuses: from estimates and projections, from surveys and from administrative data.

Location



St Pancras and Somers Town ward is located to the south-east of Camden. It is bordered to the north by Canteloves ward; to the north-west by Camden Town with Primrose Hill ward, to the west by Regent’s Park ward; to the south by King’s Cross ward; and to the east by the London Borough of Islington.



Population

The current resident population² of St Pancras and Somers Town ward at mid-2019 is **18,000 people**, ranking the largest ward by population size. The population density is 129 persons per hectare, ranking 10th highest in Camden, compared to the Camden average of 114 persons per hectare. Since 2011, the population of St Pancras and Somers Town has grown faster than the overall population of Camden (at 30.8% compared with 13.4%), the fastest growing ward on percentage population change since 2011.

¹ Further 2011 Census cross-tabulations of data are available (email population@camden.gov.uk).

² GLA 2017-based Projections ‘Camden Development, Capped AHS’, © GLA, 2019.

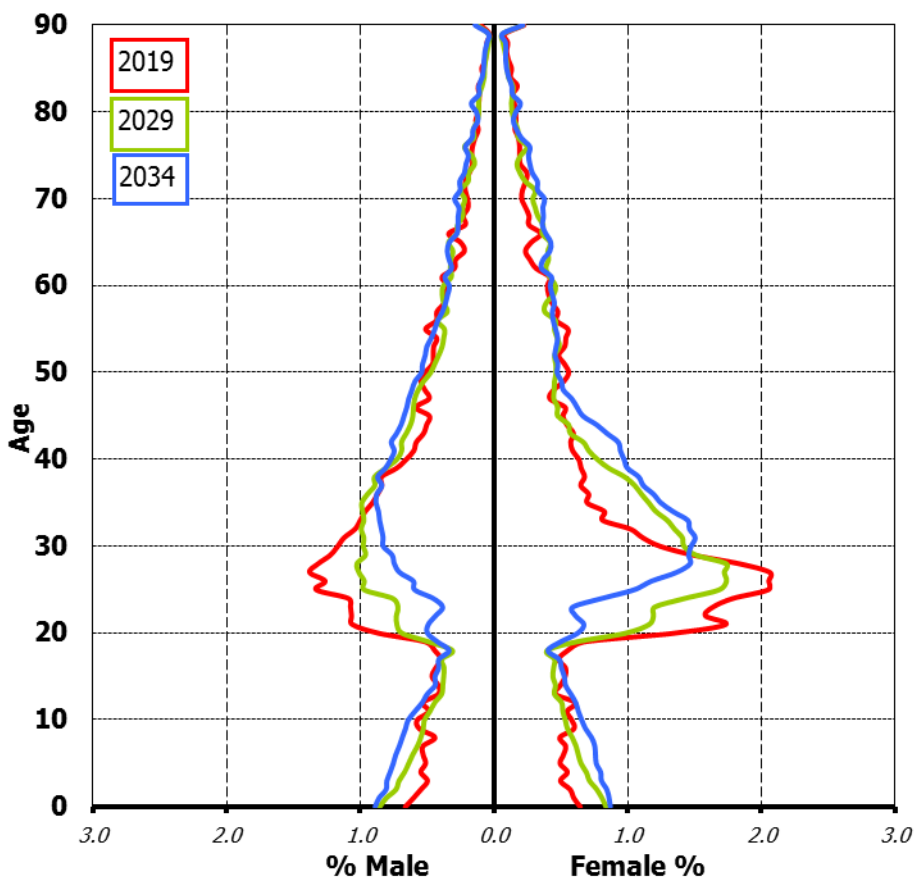
St Pancras and Somers Town's population is projected to increase by 5,400 (30.0%) over the next 10 years to 2029. The components of population change show a positive natural change (more births than deaths) over the period of +2,400 and net migration of +3,000. Births in the wards are forecast to increase from the current 250 a year to 410 by 2029, while deaths are forecast to increase from the current 90 a year, to 100 a year by 2029.

Age

St Pancras and Somers Town has a relatively young population profile with a mean age of 34.0 years compared to Camden's overall 38.3 years. It ranks the 2nd youngest in Camden by both mean and median age. Split into the dependency measure age groups: children (under 16), working age (16-64) and 'retirement age' (65+): 17.0% of the population are children aged under 16, almost three quarters are working aged (74.4%) and older people aged 65+ account for 8.6% of the population. The dependency ratio for St Pancras and Somers Town residents is 34.4³, lower by comparison with the Camden average (38.0).

Fig.1 below shows the age and sex structure changes over time. The red lines show the percentage of the population by age in 2019, green shows 2029 and blue shows 2034. Over the projection period, the St Pancras and Somers Town population has an increased proportion of children aged under 19; smaller proportions of 20-30 year olds; larger proportions of 30-50 year olds; and similar proportions of 50+.

Figure 1 Age & Sex Structure of St Pancras and Somers Town Ward: 2019, 2029 & 2034



Source: GLA 2017-based Projections 'Camden Development, Capped AHS', © ONS, 2019

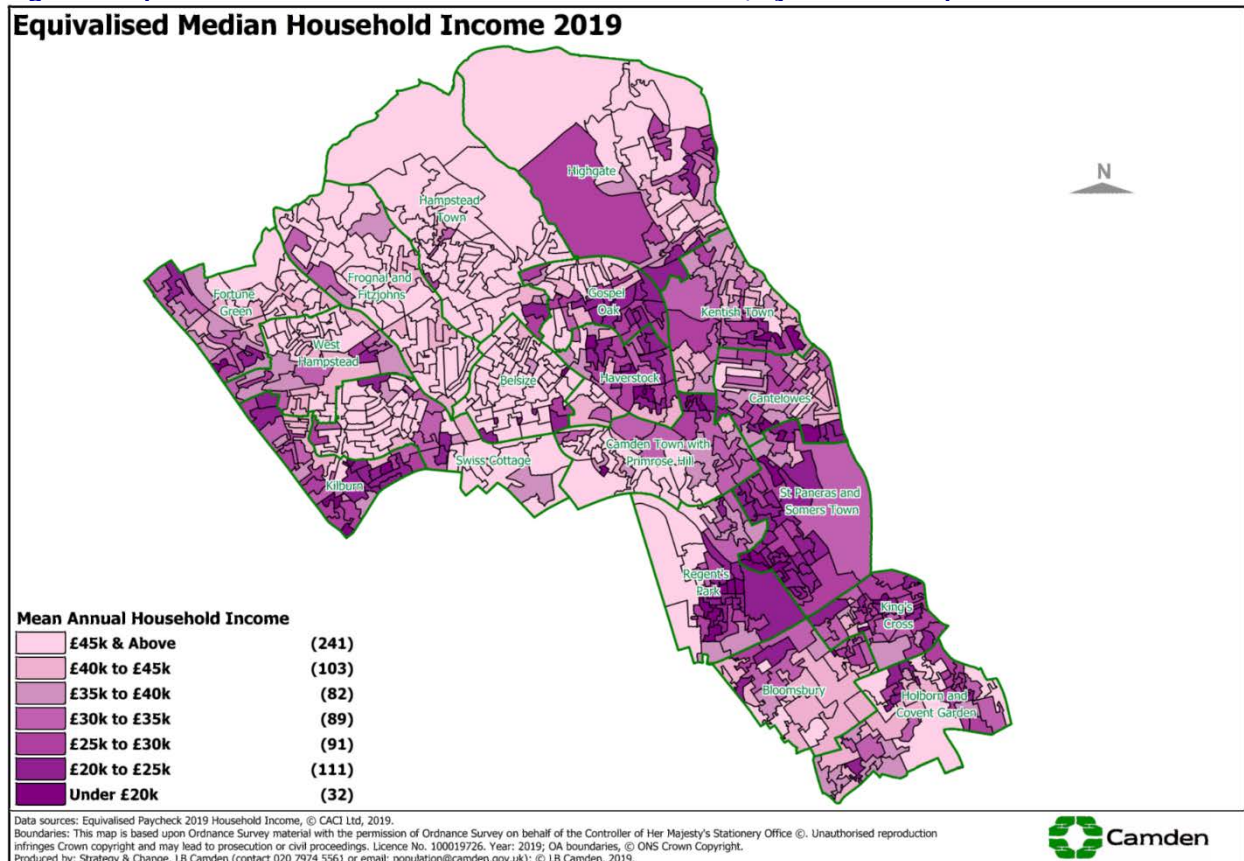
³ Dependent age groups (0-15 and 65+) constitute 34.4% of the size of the working age population (16-64). The higher the ratio the more dependent the population is. The Camden average is 38.0%.

Household income

Estimates of equivalised household income for 2019⁴ show that median gross household income in Camden was £36,053, 17% higher than the London average (£30,700). There are wide differences across Camden wards, ranging from the highest £47,748 in Hampstead Town to the lowest £24,674 in St Pancras and Somers Town ward. St Pancras and Somers Town also ranks lowest for mean household income (£29,371).

The map in Fig.2 below shows the median household income by Output Area⁵. It is clear from this that there is a concentration of households with lower median household incomes in St Pancras and Somers Town ward.

Figure 2. Equivalised Median Annual Household Income 2019, by Camden Output Area



Source: Paycheck 2019, © CACI Ltd.

Household income data matters because low household income is used as a proxy for poverty, with poverty being defined as when equivalised household income is below 60% of median household income in an area. While the CACI *Paycheck* data cannot be broken down to reveal more socio-economic details about the individual households, we know already from DWP Households Below Average Income (HBAI) local measures that poverty in Camden is above the average and that 28.5% of children live in households that are in poverty by this measure⁶. The same data expressed by ward suggests that 39.5% of children in St Pancras and Somers Town ward live in poverty, ranking the highest proportion by ward in Camden.

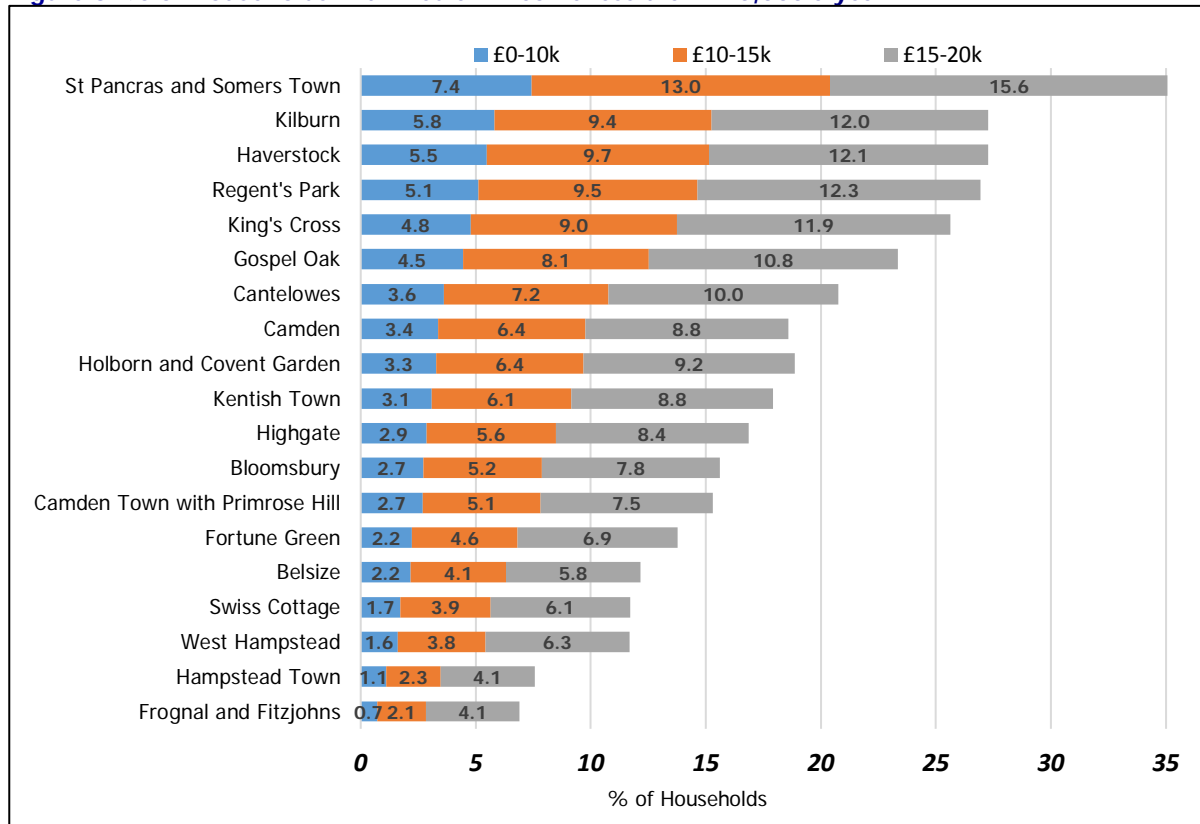
⁴ Equivalised *Paycheck* household income data for 2019, © CACI Ltd. Equivalising reflects the notion that, for example, a household of five will need a higher income than a single person living alone to enjoy a comparable standard of living. CACI calculate an 'equivalence value' for households, based on the number and age of household members. Equivalised income is calculated by applying the equivalence value to the *Paycheck* income data.

⁵ Output Areas (OAs) were the areas used to output data from the 2011 Census. There are 749 OAs in Camden. OAs form the lowest tier of a statistical geography hierarchy. OAs build into Lower-layer Super Output Areas (LSOAs) and LSOAs build into Middle-layer Super Output Areas (MSOAs).

⁶ Households Below Average Income local measures 2016, © HMRC, 2019.

According to equivalised Paycheck 2019, using the HBAI definition, a household in poverty in Camden is one with less than £21,632. Therefore, the Paycheck 2019 household income group below £20k is the group that can positively be identified as wholly below the poverty threshold, while a minority of those with household incomes of less than £25k are likely to be households in poverty, but it cannot be said definitively⁷.

Figure 3. % of Households with Median Income less than £20,000 a year



Source: Paycheck 2019, © CACI Ltd.

Deprivation

The Indices of Deprivation 2019⁸ allows for the identification of the areas in England with the highest proportion of people and households experiencing deprivation. The data is calculated at LSOA⁹ level and takes into consideration relative deprivation across seven factors: *income, employment, health and disability, education, skills and training, housing and services, and crime and living environment*. The indices are provided as both a score and as a rank position within England. The combined overall index is the *Index of Multiple Deprivation (IMD)* and, with the LSOA geography, is designed to show hotspots of deprivation that are often masked with ward level measures. However, a ward position can be calculated by averaging the IMD scores – by this, St Pancras and Somers Town is ranked the most deprived ward in Camden.

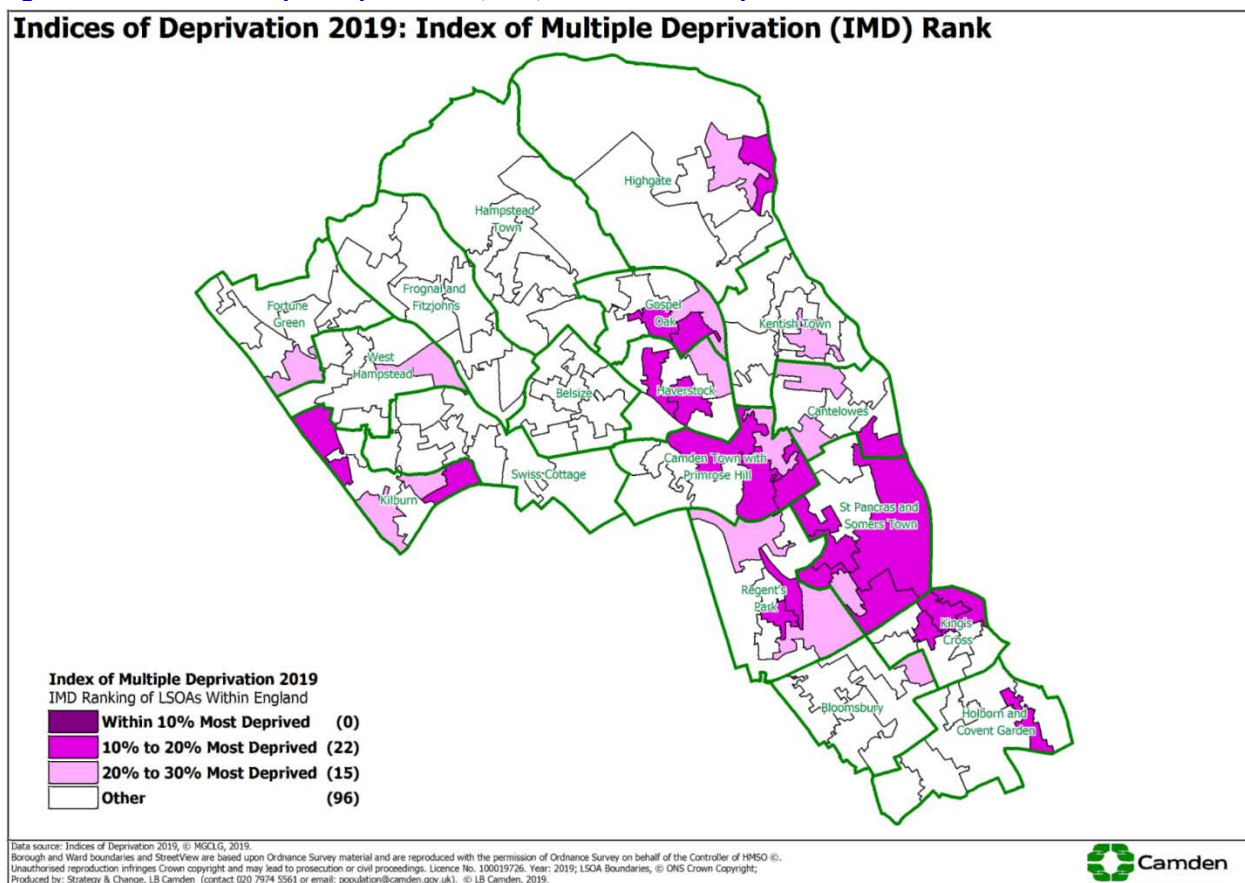
Results for Camden show that there are concentrations of LSOAs within Camden that on the rankings of IMD fall within the highest levels in England. St Pancras and Somers Town ward contains 5 LSOAs that fall within the 20% most deprived LSOAs in England and 1 that falls within the 20-30% most deprived LSOAs in England. St Pancras and Somers Town's most deprived LSOA (E01000959) is the 5th most deprived LSOA in Camden and falls within the 14% most deprived LSOAs in England. Best viewed on a map, Fig.4 shows the LSOAs in Camden ranked within the 10%, 20% and 30% most deprived in England.

⁷ CACI *PayCheck* data is published in £5k bands so it is not possible to establish the exact number of households below or above the 60% threshold.

⁸ English Indices of Deprivation 2019, © MHCLG, 2019.

⁹ LSOAs are a statistical geography, smaller than wards, based on groups of 2011 Census Output Areas (OAs). There are 133 LSOAs in Camden and 32,844 in England. There are 8 LSOAs in St Pancras and Somers Town ward (E01000952-E01000959).

Figure 4. Index of Multiple Deprivation (IMD) 2019 – Most deprived LSOAs in Camden



Source: English Indices of Deprivation 2019, © MHCLG, 2019.

Two sub domains are often picked out to indicate deprivation affecting children (IDACI) and older people (IDAPOI). Table 1 below shows the results for St Pancras and Somers Town ward for the overall Index of Multiple Deprivation and for the Income sub-domains affecting children and older people. 7 of the 8 St Pancras and Somers Town LSOAs fall within the 20% most deprived in England on IDACI (affecting children). All 8 LSOAs fall within the 15.5% most deprived in England on IDAPOI (affecting older people). See maps below Figs.5 and 6.

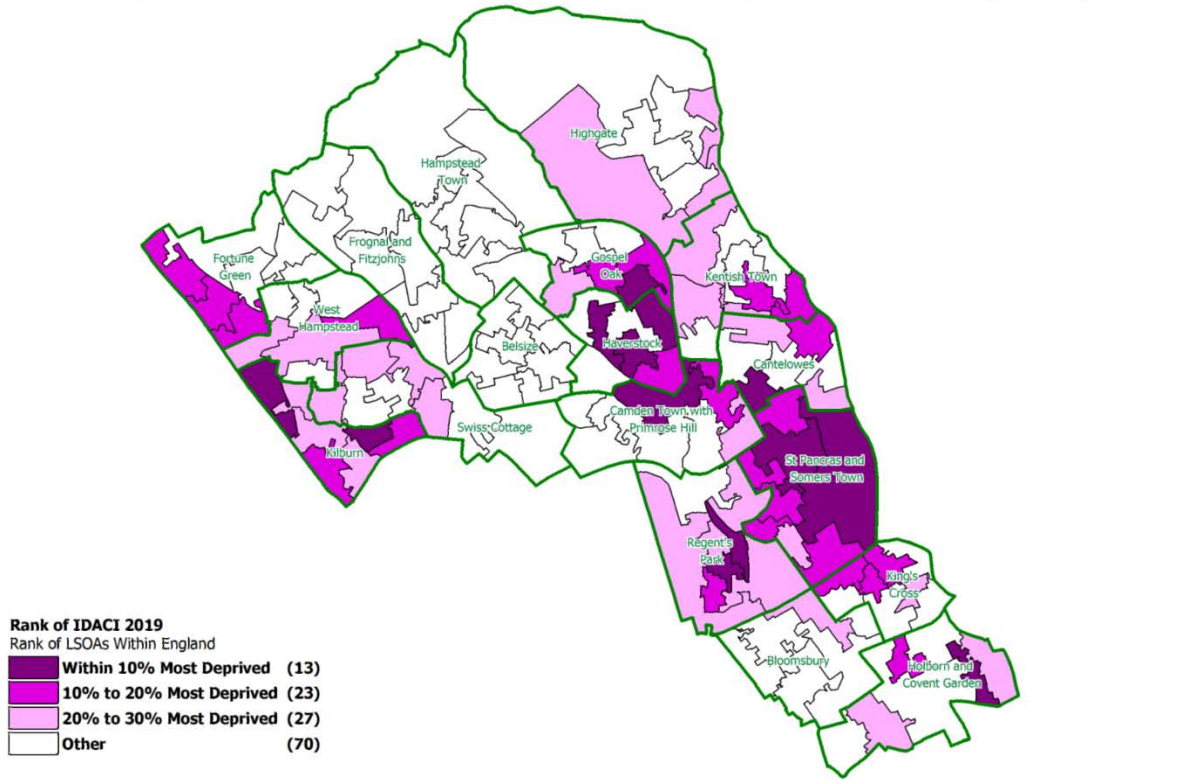
Table 1. Index of Multiple Deprivation (IMD) 2019: LSOAs in St Pancras and Somers Town

Ward and LSOA		Index of Multiple Deprivation			Indices of Deprivation Sub-domains			
Ward name	LSOA code	Rank in Camden (/133)	RANK OF IMD of all LSOAs in England (/32,844)		Income Deprivation Affecting Children Index (IDACI)		Income Deprivation Affecting Older People Index (IDAPOI)	
			1 is most deprived	% Most Deprived of LSOAs in England	Rank in England (/32,844)	% Most Deprived of LSOAs in England	Rank in England (/32,844)	% Most Deprived of LSOAs in England
St Pancras and Somers Town	E01000952	22	6,511	19.8	4,636	14.1	1,504	4.6
	E01000953	10	5,146	15.7	2,524	7.7	856	2.6
	E01000954	14	5,931	18.1	4,554	13.9	4,623	14.1
	E01000955	23	6,579	20.0	7,424	22.6	5,054	15.4
	E01000956	20	6,420	19.5	3,332	10.1	2,335	7.1
	E01000957	38	9,984	30.4	3,913	11.9	5,058	15.4
	E01000958	45	11,047	33.6	1,852	5.6	612	1.9
	E01000959	5	4,567	13.9	3,493	10.6	2,432	7.4

Source: English Indices of Deprivation 2019, © MHCLG, 2019.

Figure 5. Income Deprivation Affecting Children Index (IDACI) 2019

Indices of Deprivation 2019: Income Deprivation Affecting Children Index (IDACI) Rank



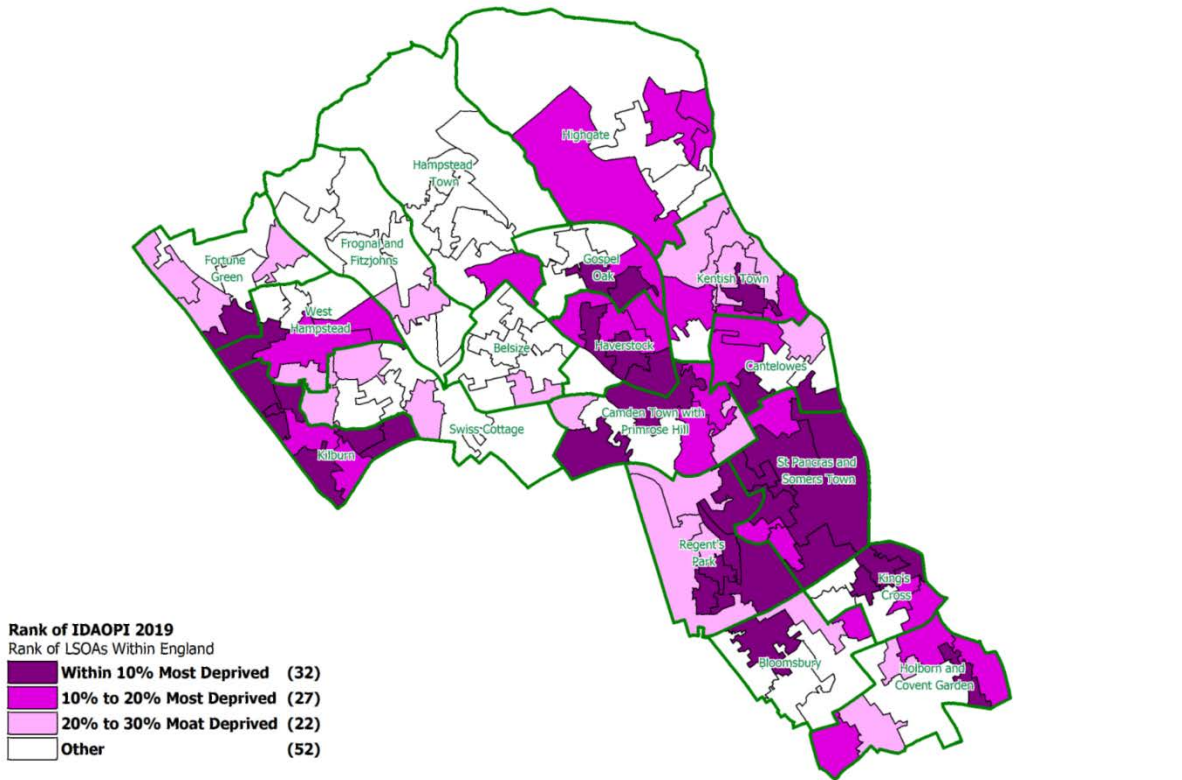
Data source: Indices of Deprivation 2019, © MHCLG, 2019. Borough and Ward boundaries and StreetView are based upon Ordnance Survey material and are reproduced with the permission of Ordnance Survey on behalf of the Controller of HMSO ©. Unauthorised reproduction infringes Crown copyright and may lead to prosecution or civil proceedings. Licence No. 100019726. Year: 2019; LSOA Boundaries, © ONS Crown Copyright; Produced by: Strategy & Change, LB Camden (contact 020 7974 5561 or email: population@camden.gov.uk). © LB Camden, 2019.



Source: English Indices of Deprivation 2019, © MHCLG, 2019.

Figure 6. Income Deprivation Affecting Older People Index (IDAOPI) 2019

Indices of Deprivation 2019: Income Deprivation Affecting Older People Index (IDAOPI) Rank



Data source: Indices of Deprivation 2019, © MHCLG, 2019. Borough and Ward boundaries and StreetView are based upon Ordnance Survey material and are reproduced with the permission of Ordnance Survey on behalf of the Controller of HMSO ©. Unauthorised reproduction infringes Crown copyright and may lead to prosecution or civil proceedings. Licence No. 100019726. Year: 2019; LSOA Boundaries, © ONS Crown Copyright; Produced by: Strategy & Change, LB Camden (contact 020 7974 5561 or email: population@camden.gov.uk). © LB Camden, 2019.



Source: English Indices of Deprivation 2019, © MHCLG, 2019.

Employment

There are no up to date data on the employment status of residents, but detailed information can be obtained from the 2011 Census to cover economic activity, employment and unemployment at that time. Estimates of workplace jobs in the area from the Business Register and Employment Survey (BRES) reveals that in 2018 that there were 30,000 jobs located in St Pancras and Somers Town ward. The largest sectors providing employment are in *Public Services* (8,000; 27%); *Distribution & Hospitality* (7,000; 23%) and *Professional & Business Services* (6,000; 20%). Employment levels in the ward have increased by 16,400 (121%) since 2009.

Benefits

Due to the Government's welfare reform programme there has been changes in the way that benefit statistics are measured, which is making it more difficult to make meaningful comparisons over time. The most recently accessible working aged benefits data relates to November 2018, with the most common benefits in St Pancras and Somers Town ward: Employment & Support Allowance (875); Disability Living Allowance (575); and Income Support (260), followed by those in receipt of Incapacity Benefit & Severe Disablement Allowance (25). See table 2 below.

Table 2. DWP Working aged Benefits Claimants, St Pancras and Somers Town, November 2018

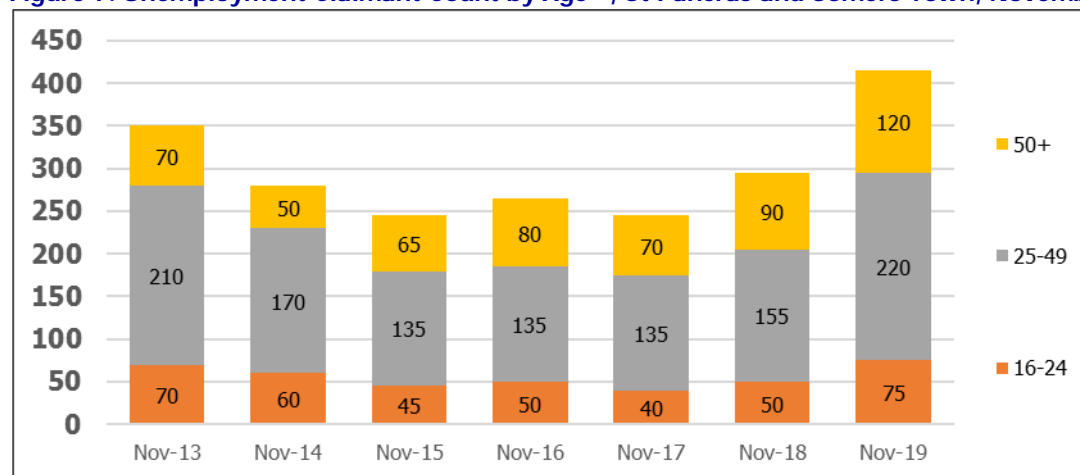
Benefit type	Claimants
Employment & Support Allowance	875
Incapacity Benefit & Severe Disablement Allowance	25
Income Support	260
Disability Living Allowance	575

Source: DWP, via NOMIS, © 2019

Unemployment

The current measure of unemployment at local-level is a hybrid of Jobseeker Allowance (JSA) and unemployment-related Universal Credit claimants¹⁰ - referred to as the *Claimant Count*. In November 2019, there were 420 claimants in St Pancras and Somers Town, ranking the highest by ward. Between November 2018 and November 2019, the count increased by 125 (42%), lower than the rate of increase across Camden (45%). The increase is in partly due to the broader span of claimants required to look for work under Universal Credit than under Jobseeker's Allowance. Figure 7 below shows the breakdown by age-group.

Figure 7. Unemployment Claimant Count by Age¹¹, St Pancras and Somers Town, November 2019



Source: DWP, via NOMIS, © 2020

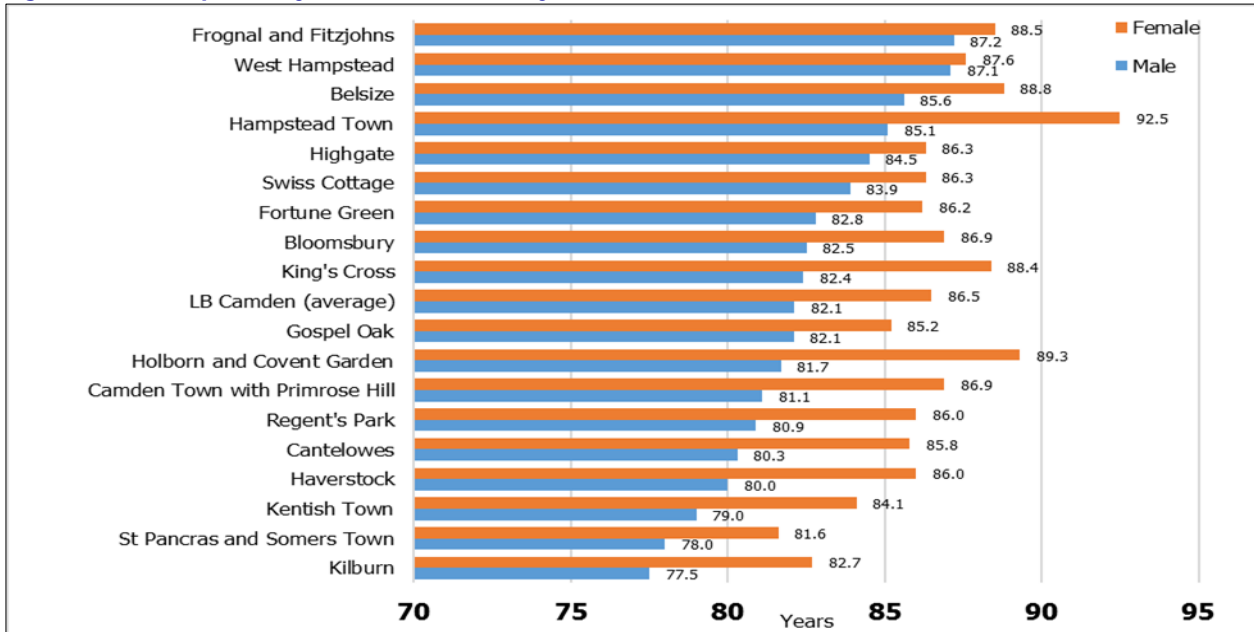
¹⁰ Universal Credit was introduced in Camden from March 2016.

¹¹ Numbers are independently rounded to the nearest 5, so may not sum to the total quoted in the above paragraph.

Life expectancy

The latest data for wards relates to the period 2013-17¹². This shows that the life expectancy at birth for a male in St Pancras and Somers Town is 78.0 years compared to the Camden average of 82.1 and ranks 17th highest amongst Camden wards. For a female, average life expectancy is 81.6 years compared to the Camden average of 86.5 and lowest by ward. See Fig.8 below.

Figures 8 Life Expectancy at Birth 2013-17 by Sex, Camden wards

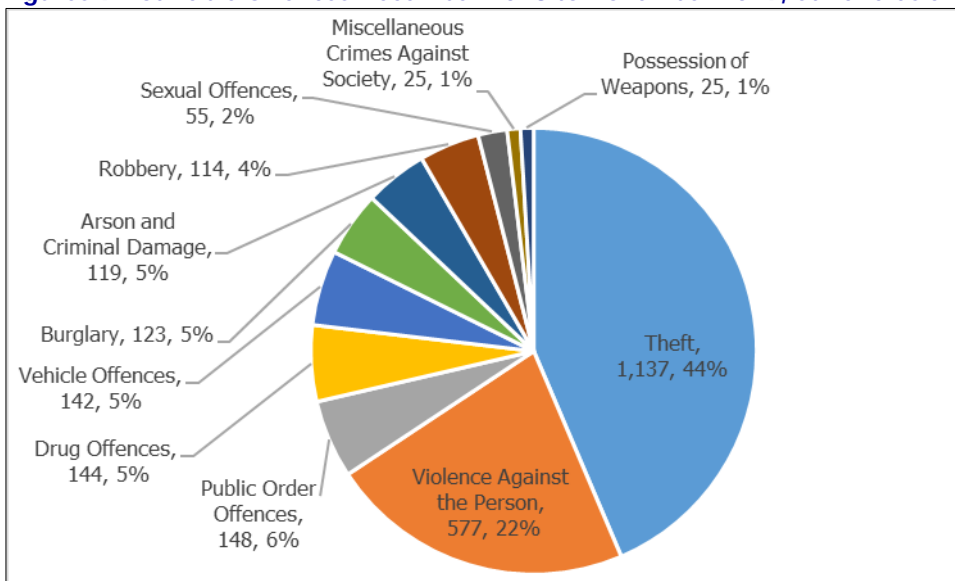


Source: ONS © Crown Copyright 2019.

Crime

The latest crime data for wards are for the 12 months to November 2019¹³. During the period there were 2,609 notifiable offences relating to St Pancras and Somers Town ward, the 4th highest number of offences by ward, 7% of all offences recorded in Camden. The ward saw a 10% increase in offences compared to the previous year. The most common offences were *Theft* (1,137; 44%); *Violence against the person* (577; 22%); and *Public Order Offences* (148; 6%). See figure 9.

Figures 9 Notifiable Offences December 2018 to November 2019, St Pancras and Somers Town



¹² ONS Life Expectancy 2013-17 for wards, © ONS, 2019 via PHE Local Health website.

¹³ Metropolitan Police Service, via GLA London Datastore, January 2020.