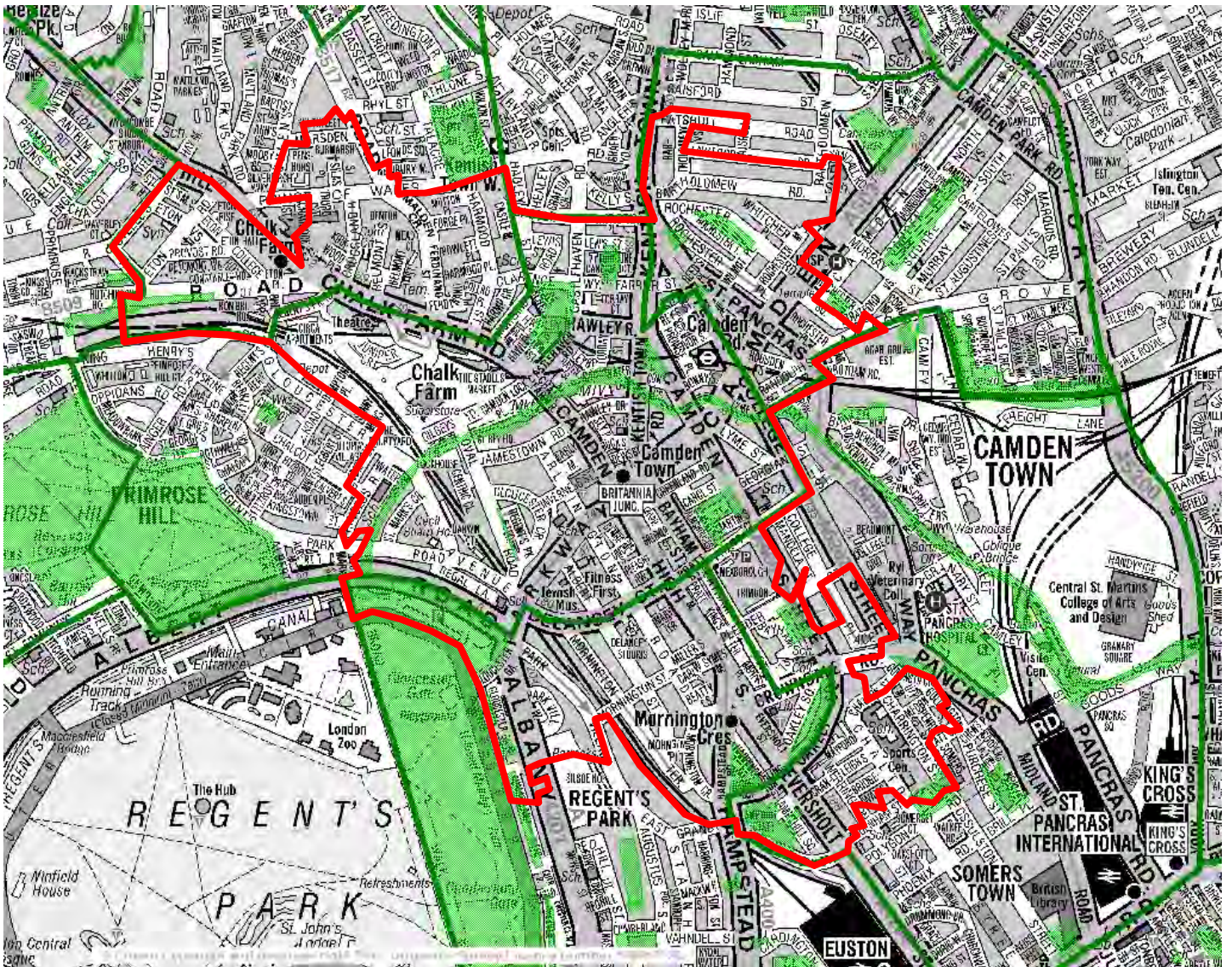


Camden Central



Population: 26,946
Land area: 202.853 hectares

December 2015

The maps contained in this document are used under licence
A-Z: Reproduced by permission of Geographers' A-Z Map Co. Ltd. © Crown Copyright and database rights OS 100017302
OS: © Crown copyright and database rights 2016 OS 100019726

Strengths

Economic

Camden Central has a large number of jobs: 23,400

Significant retail presence

Has a designated town centre

Has a business improvement district - Camden Town Unlimited

Health & Well-being

Men have a longer life expectancy than the Camden figure at 82.3 years (Camden 79 years)

Environment & Transport

All homes have access to a metropolitan park

94% of homes have access to a district park

75.1% of homes have access to a local, small or pocket park

91.9% of homes have access to nature

There are good public transport links

Camden Central has a PTAL score of 6.6 (Camden: 5.6)

Knowledge, Skills & Experience

61.6% of pupils achieved KS4 GCSE 5+ A*-C inc English and maths (Camden: 59.9%)

Community

91.8% of under 5s are registered with Early years

Challenges

Social

3 of the 15 Camden Central LSOAs are in the top 10% in England for probability of loneliness of those aged 65 and over

Economic

18.9% of working age adults are on out of work benefits (Camden: 9.3%)

The lowest average household income in the neighbourhood is £27,852 (Camden Central: £42,820, Camden: £52,962)

80.2% of families are receiving tax credits (Camden: 61.1%)

Health & Well-being

Smoking prevalence is at 25% (Camden: 20%)

Knowledge, Skills & Experience

17.3% of residents have no qualifications (Camden: 12.7%)

Community

Crime rate of 328 - the highest in the borough (Camden 124.4)

Violence against the person rate of 49 - the highest in the borough (Camden 20.2)

Drugs rate of 62 - the highest in the borough (Camden: 9)

22.1% of adults are on the adult social care system (Camden: 16.8%)

53.7% of children are on the children's social care system (Camden: 40.7%)

Multiple deprivation

Lower super output areas* that fall within 10% most deprived in England
(Camden Central = 15 LSOAs)

Most deprived in England (1 LSOA)

Income deprivation (3 LSOAs)

Crime and disorder deprivation (9 LSOAs)

Living environment deprivation (7 LSOAs)

Income deprivation affecting children (8 LSOAs)

Income deprivation affecting older people (6 LSOAs)

* A lower super output area is a geography for the collection and publication of small area statistics. It has an average of roughly 1,500 residents and 650 households

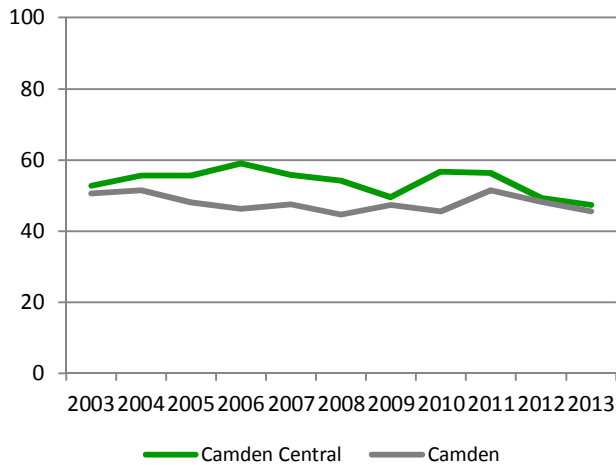
Social

26,946
people live in
Camden Central,
in 11,466 households

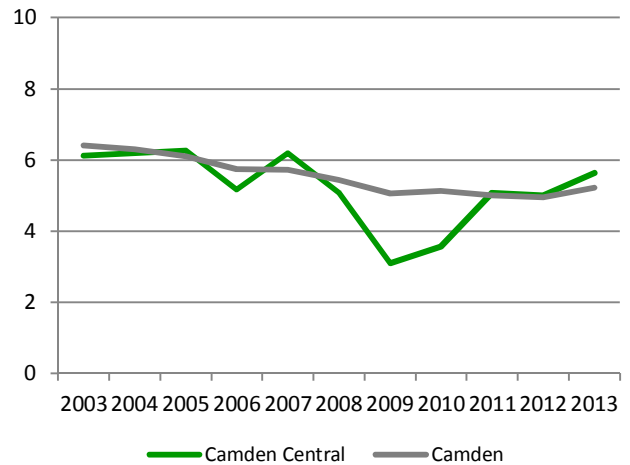
132.8
residents per hectare,
compared to 105.4 across
Camden overall

There will be a
population increase of
21.5%
by 2028

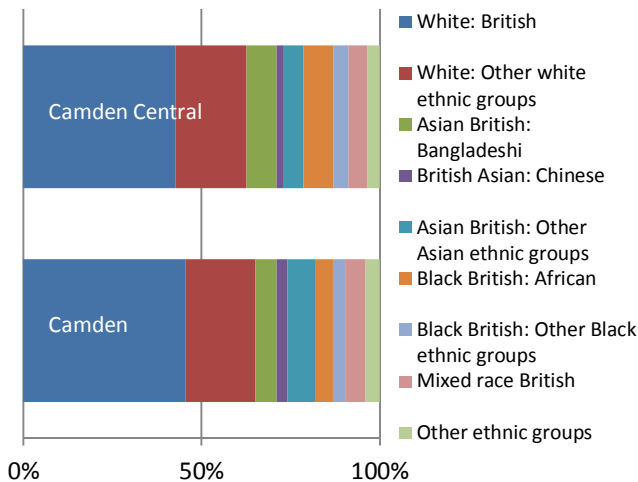
General fertility rate



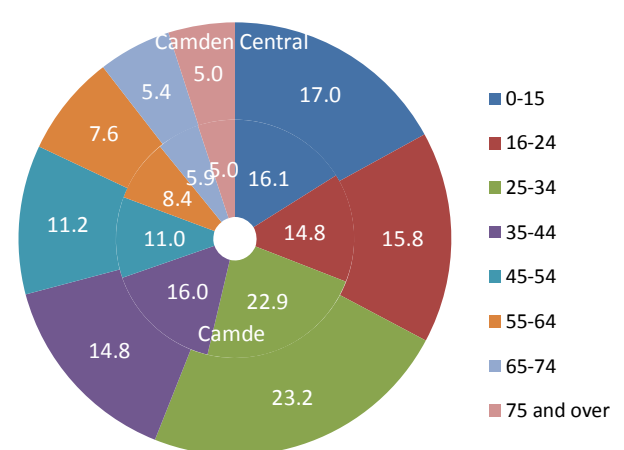
Crude mortality rate (deaths per 1,000)



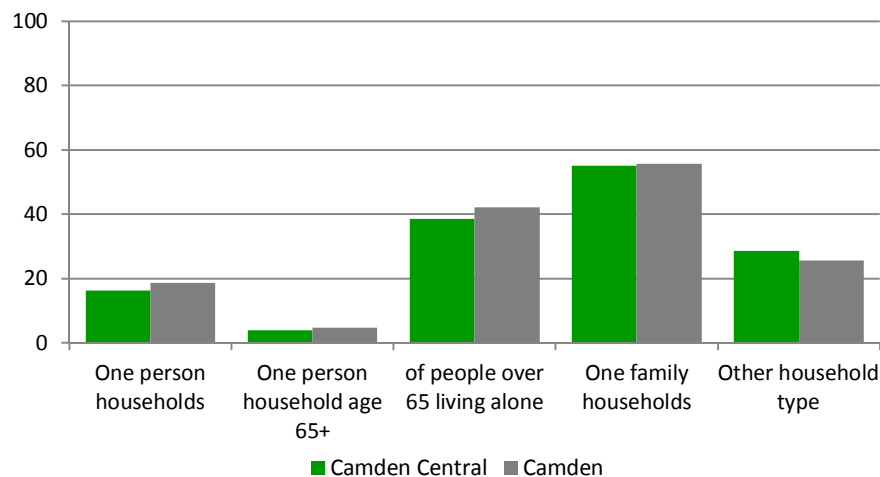
Ethnicity



Age



Households

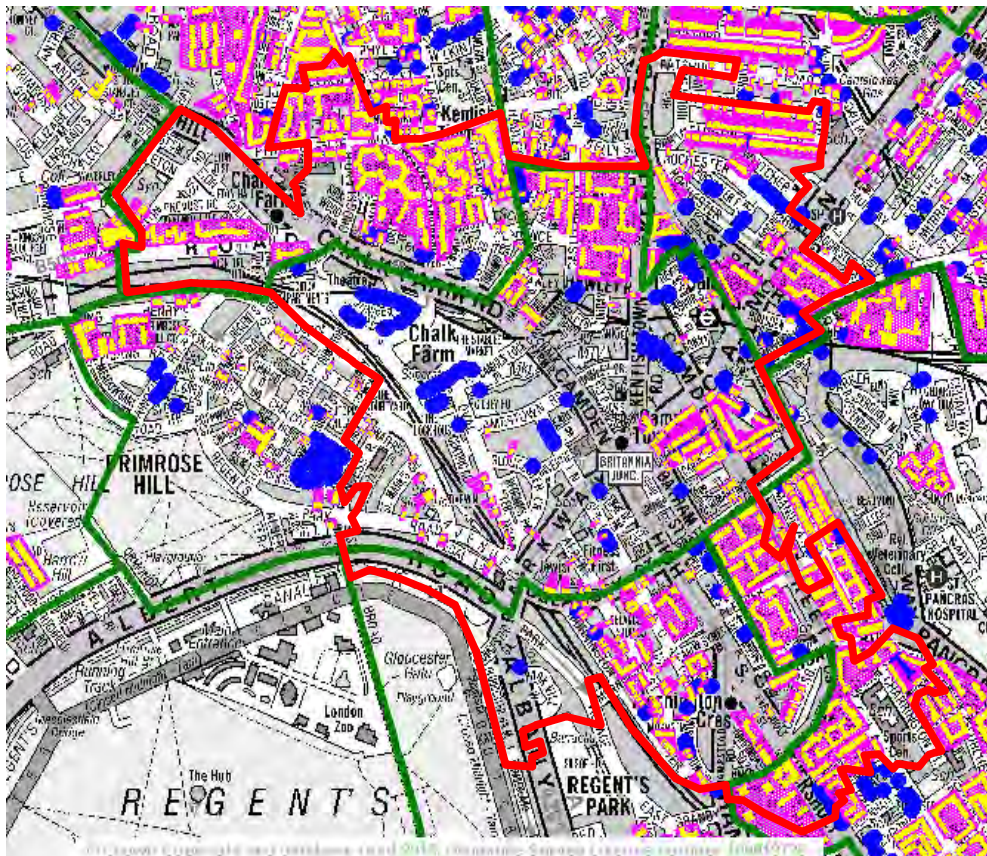


There are
2,649
families in Camden Central with
dependent children and
5,019
dependent children

38.6%
of people aged over 65 live alone
compared to 42.2% in Camden

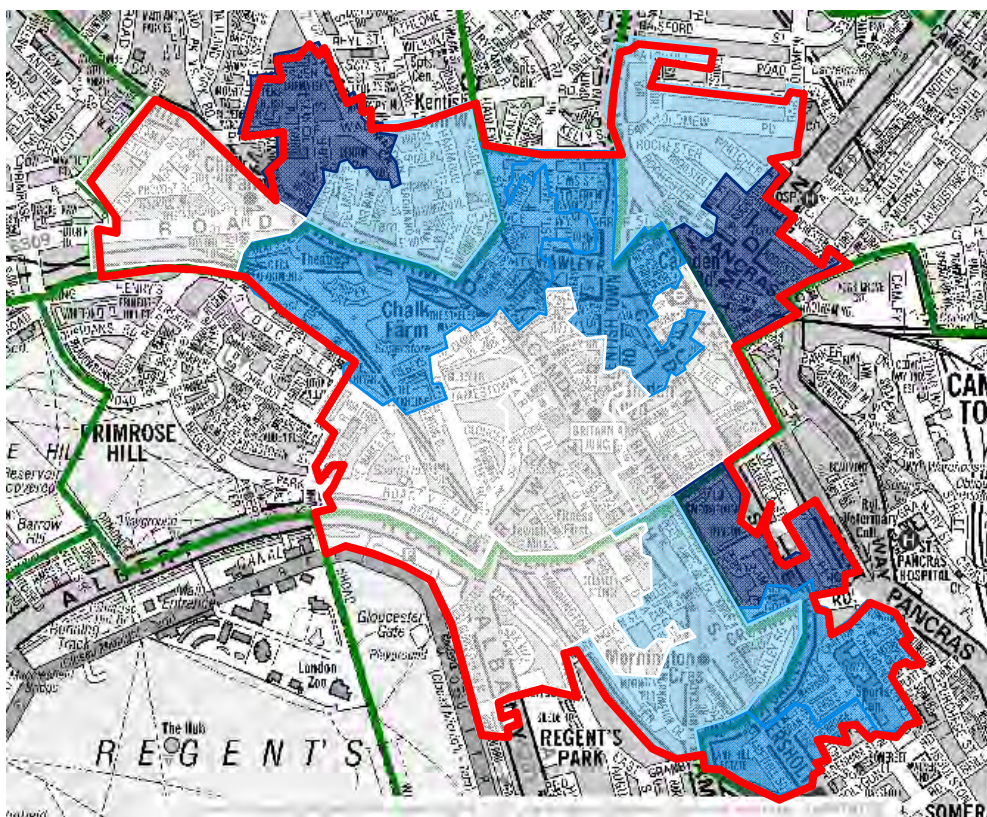
Social

Social housing



- Council housing estate
- Council housing block
- Housing association property

Probability of loneliness for those aged 65 and over



- Within 10% LSOAs most lonely in England
- 10% to 20% LSOAs most lonely in England
- 20% to 30% LSOAs most lonely in England
- Other

The maps contained in this document are used under licence

A-Z: Reproduced by permission of Geographers' A-Z Map Co. Ltd. © Crown Copyright and database rights OS 100017302

OS: © Crown copyright and database rights 2016 OS 100019726

Social

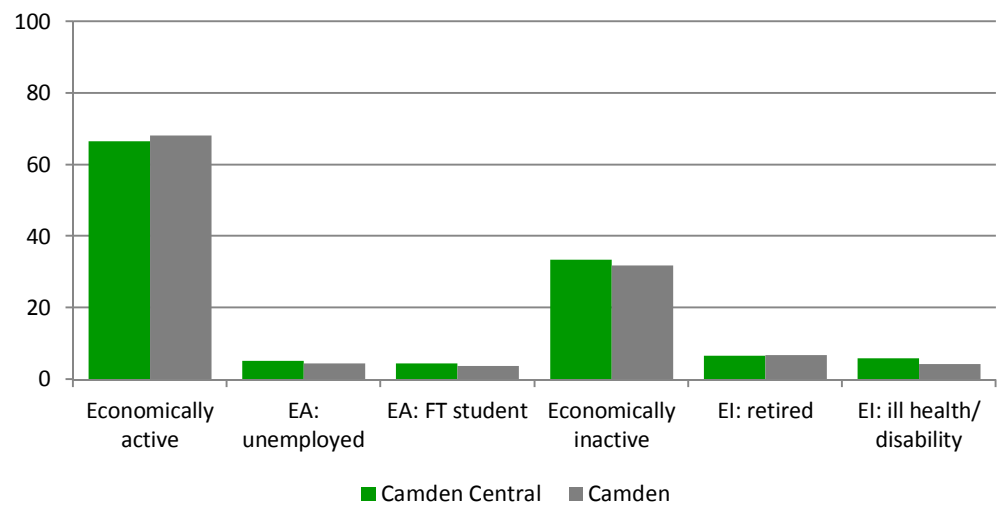
<div><div>Significantly different</div><div>Significantly better</div><div>Significantly worse</div></div>	Camden Central		Camden	Less	More	Variance	Range			
							Lowest		Highest	
							N'hood		N'hood	
	No.	%	%							
Population										
Total people	26,946						1,710	Highgate Hill	32,159	West Hampstead
Population density people per hectare)	132.8		105.4				10.9	Highgate Hill	182.3	Gospel Oak
Gender										
Male	13214	49.0	48.9			0.1	46.6	Dartmouth Park	55.5	Fitzrovia
Female	13732	51.0	51.0			-0.1	44.5	Fitzrovia	53.4	Dartmouth Park
General Fertility Rate (Camden Town with Primrose Hill ward), trend data										
2003	158	52.7	50.5			2.2		N/A		N/A
2004	164	55.6	51.5			4.1		N/A		N/A
2005	167	55.7	48.0			7.7		N/A		N/A
2006	174	59.0	46.2			12.8		N/A		N/A
2007	162	55.9	47.6			8.3		N/A		N/A
2008	157	54.1	44.6			9.5		N/A		N/A
2009	151	49.5	47.3			2.2		N/A		N/A
2010	170	56.7	45.5			11.2		N/A		N/A
2011	169	56.3	51.5			4.8		N/A		N/A
2012	163	49.4	48.2			1.2		N/A		N/A
2013	161	47.4	45.5			1.9		N/A		N/A
Crude Mortality Rate (CTwPH ward) deaths per 1000, trend data										
2003	77	6.1	6.4			-0.3		N/A		N/A
2004	78	6.2	6.3			-0.1		N/A		N/A
2005	79	6.3	6.1			0.2		N/A		N/A
2006	65	5.2	5.7			-0.6		N/A		N/A
2007	78	6.2	5.7			0.5		N/A		N/A
2008	64	5.1	5.4			-0.3		N/A		N/A
2009	39	3.1	5.1			-2.0		N/A		N/A
2010	45	3.6	5.1			-1.6		N/A		N/A
2011	64	5.1	5.0			0.1		N/A		N/A
2012	63	5.0	4.9			0.1		N/A		N/A
2013	71	5.6	5.2			0.4		N/A		N/A

Population increase									
2018	29626	12.4	8.8			3.6	4.7	Belsize Park	28.9 Somers Town
2023	31032	17.8	12.6			5.2	7.0	Belsize Park	42.4 Somers Town
2028	32009	21.5	16.1			5.4	9.5	Belsize Park	47.4 Somers Town
Ethnic Group (Jan 2013)									
% White English/Welsh/Scottish/N Irish	11444	43.4	44.0			-0.6	32.1	Somers Town	69.1 Highgate Hill
% White Irish	954	3.6	3.2			0.4	1.9	Regents Park	5.3 Kilburn Priory
% White Gypsy/Irish Traveller	27	0.1	0.1			0.0	0.0		0.2 H. Hill, Cl'well
% White Other	4339	16.5	19.0			-2.5	11.5	Gospel Oak	25.6 Belsize Park
% Mixed White & Black Caribbean	336	1.3	1.1			0.1	0.4	Fitzrovia	2.0 Dartmouth Park
% Mixed White & Black African	239	0.9	0.8			0.1	0.2	Highgate Hill	1.5 Swiss Cottage
% Mixed White & Asian	403	1.5	1.8			-0.2	1.1	Kings Cross, Som	3.6 Covent Garden
% Mixed Other	474	1.8	1.9			-0.1	1.0	Holborn	2.4 Euston
% Asian British Indian	466	1.8	2.8			-1.0	0.8	Gospel Oak	6.1 Fitzrovia
% Asian British Pakistani	108	0.4	0.7			-0.3	0.1	Highgate Hill	1.4 Swiss Cottage
% Asian British Bangladeshi	2261	8.6	5.7			2.9	0.1	Highgate Hill	18.9 Somers Town
% Asian British Chinese	509	1.9	2.9			-1.0	0.9	Parliament Hill & H	8.6 Fitzrovia
% Asian British Other	928	3.5	4.0			-0.5	1.1	Parliament Hill & H	6.4 Fitzrovia
% Black British African	1822	6.9	4.9			2.0	0.6	Highgate Hill	8.6 Kings Cross
% Black British Caribbean	481	1.8	1.6			0.2	0.2	Highgate Hill	2.6 Gospel Oak
% Black British Other	619	2.3	1.7			0.6	0.5	Highgate Hill	2.8 Gospel Oak
% Other Ethnic Group Arab	332	1.3	1.6			-0.3	0.1	Highgate Hill	5.0 Kilburn Priory
% Any Other Ethnic Group	610	2.3	2.3			0.0	0.6	Highgate Hill	3.2 Fitzrovia
Country of birth									
% born outside the UK	10418	39.5	42.5			-3.0	26.3	Dartmouth Park	52.7 Swiss Cottage
% born in the EU	3197	12.1	13.0			-0.9	9.1	Dartmouth Park	17.3 Fitzrovia
% born in other countries	7224	27.4	29.5			-2.1	17.3	Dartmouth Park	40.0 Swiss Cottage
Age (Jan 2013)									
% 0-15	4475	17.0	16.1			0.9	9.0	Covent Garden	21.4 Gospel Oak
% 16-24	4171	15.8	14.8			1.0	6.8	Highgate Hill	38.8 Fitzrovia
% 25-34	6124	23.2	22.9			0.4	12.6	Highgate Hill	31.5 West Hampstead
% 35-44	3899	14.8	16.0			-1.2	12.9	Fitzrovia	19.2 Belsize Park
% 45-54	2940	11.2	11.0			0.2	8.0	Fitzrovia	15.4 Highgate Hill
% 55-64	2003	7.6	8.4			-0.8	5.6	Fitzrovia	15.1 Highgate Hill
% 65-74	1426	5.4	5.9			-0.5	4.0	Fitzrovia	11.8 Highgate Hill
% 75 and over	1314	5.0	5.0			0.0	2.7	Fitzrovia	7.7 Highgate Hill
Disability or Long Term health problem									
% day to day activities limited a lot	2289	8.7	7.0			1.6	4.1	Highgate Hill	11.9 Gospel Oak
% day to day activities limited a little	2246	8.5	7.4			1.1	5.3	Fitzrovia	10.0 Gospel Oak
% not limited	21817	82.8	85.6			-2.8	78.1	Gospel Oak	90.4 Highgate Hill

Disability									
Number of people with learning disabilities	41						N/A	N/A	
Number of wheelchair users	403						N/A	N/A	
Number of people partially sighted	83						N/A	N/A	
Number of people with hearing loss	105						N/A	N/A	
Religion									
	26352								
% Christian	8819	33.5	34.0			-0.5	28.8	Fitzrovia	39.2 Gospel Oak
% Buddhist	273	1.0	1.3			-0.2	0.3	Highgate Hill	2.0 Fitzrovia
% Hindu	260	1.0	1.4			-0.4	0.5	Dartmouth Park	3.2 Fitzrovia
% Jewish	587	2.2	4.5			-2.2	0.3	Somers Town	12.0 Highgate Hill
% Muslim	4342	16.5	12.1			4.4	0.9	Highgate Hill	27.8 Somers Town
% Sikh	44	0.2	0.2			0.0	0.0	Camden NT, High	0.5 Fitzrovia
% Other religion	128	0.5	0.6			-0.1	0.3	Holborn, S Town	1.0 Dartmouth Park
% of no religion	6775	25.7	25.5			0.2	17.2	Regents Park	37.2 Camden New Town
% religion not stated	5124	19.4	20.5			-1.1	17.4	Somers Town	26.9 Fitzrovia
Adult Lifestage: Age 16-75 and over									
	0.0								
% adults with no dependent children	15954	73.6	73.7			-0.1	64.2	Gospel Oak	86.7 Fitzrovia
% adults with dependent children	5724	26.4	26.3			0.1	13.3	Fitzrovia	35.8 Gospel Oak
Housing									
Number of dwellings	11,829						798	Highgate Hill	14972 West Hampstead
Number of households	11,466						722	Highgate Hill	15154 West Hampstead
Household composition (people)									
% one person households	4264	16.3	18.6			-2.3	12.3	Highgate Hill	27.7 Bloomsbury
% one person household age 65 and over	1058	4.1	4.8			-0.7	3.8	Camden New Town	8.0 Primrose Hill
% of people over 65 living alone		38.6	42.2			-3.6	21.8	Dartmouth Park	57.9 Kilburn Priory
% one family households	14383	55.1	55.7			-0.6	36.4	Fitzrovia	67.8 Highgate Hill
% other household type (in a household with more than one family, shared)	7470	28.6	25.7			2.9	17.5	Primrose Hill	35.1 Covent Garden
Families in households (families)									
% with dependent children in family (families)	2649	45.3	44.5			0.8	33.1	Fitzrovia	55.8 Gospel Oak
Total number of dependent children (persons)	5,019							N/A	N/A
Lone parent households: 16-74 households									
% households that are lone parent households with dependent children	912	7.9	6.4			1.5	2.7	Primrose Hill	19.1 Kilburn Priory
Lone parents of all with dependent children									
% of all people with dependent children that are lone parents	912	15.9	13.4			2.5	3.8	Highgate Hill	19.5 Gospel Oak

Economic

Economic activity

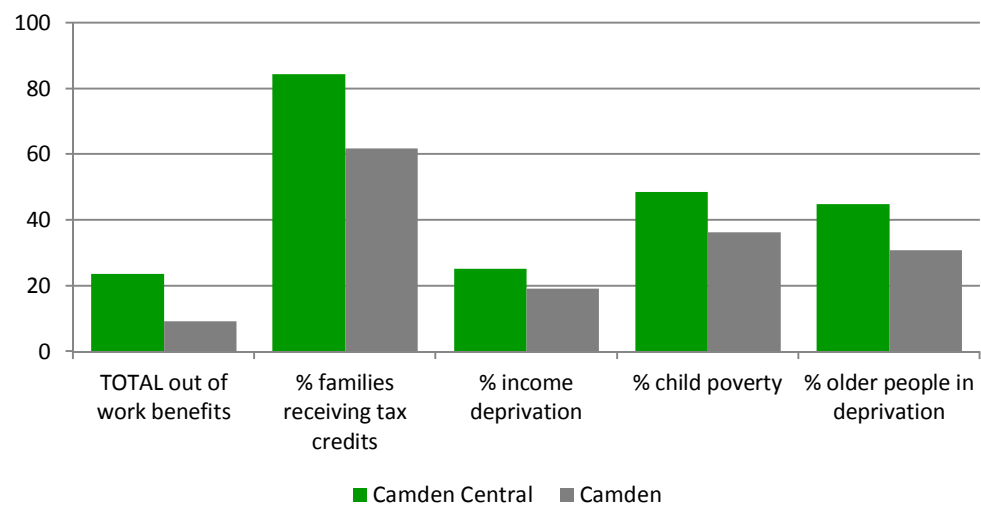


66.6%
of working age adults are economically active

6.6%
are retired

There are
23,400 jobs
in Camden Central,
1.1 job per capita of working age residents

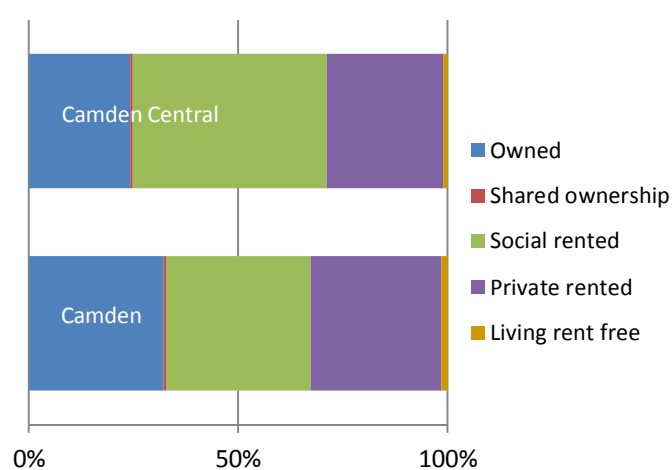
Benefits and income



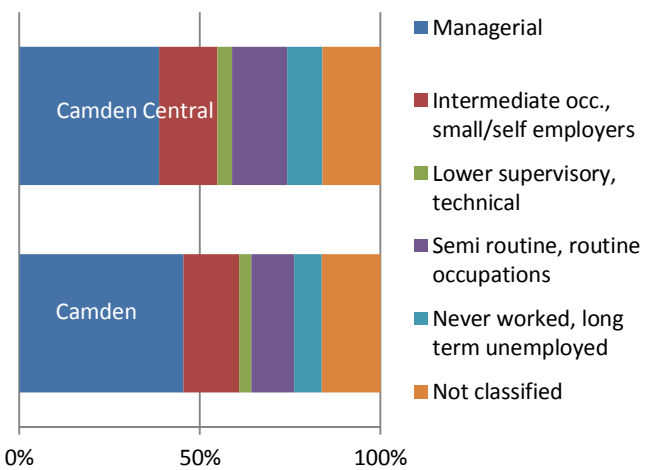
The average annual household income is
£42,820
compared to £52,962 for Camden

80.2%
of families are on tax credits compared to 61.8% for Camden families

Housing tenure

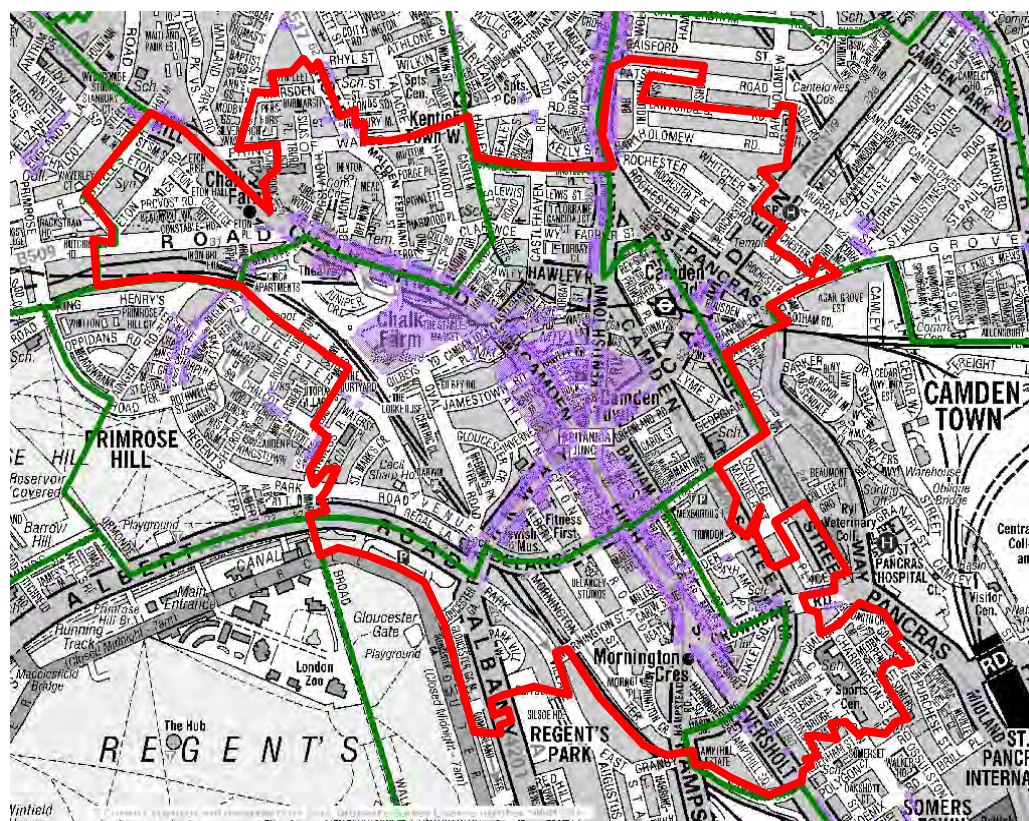


Socio-economic groups



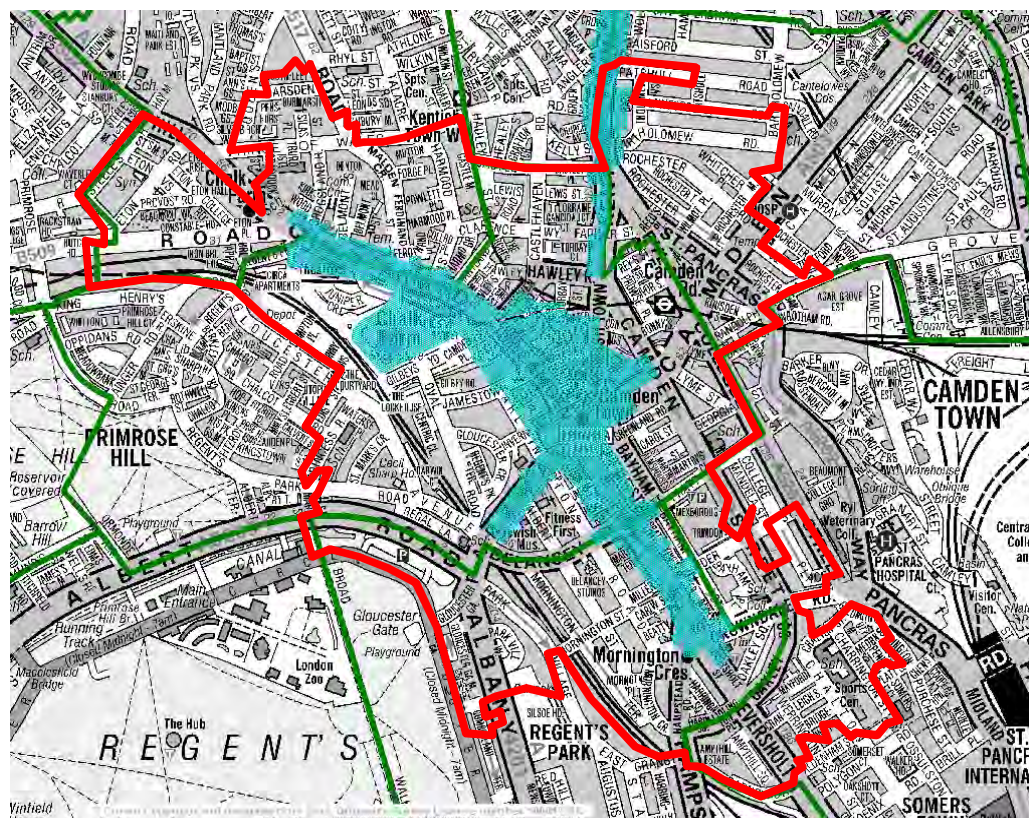
Economic

Retail presence



■ Retail premises

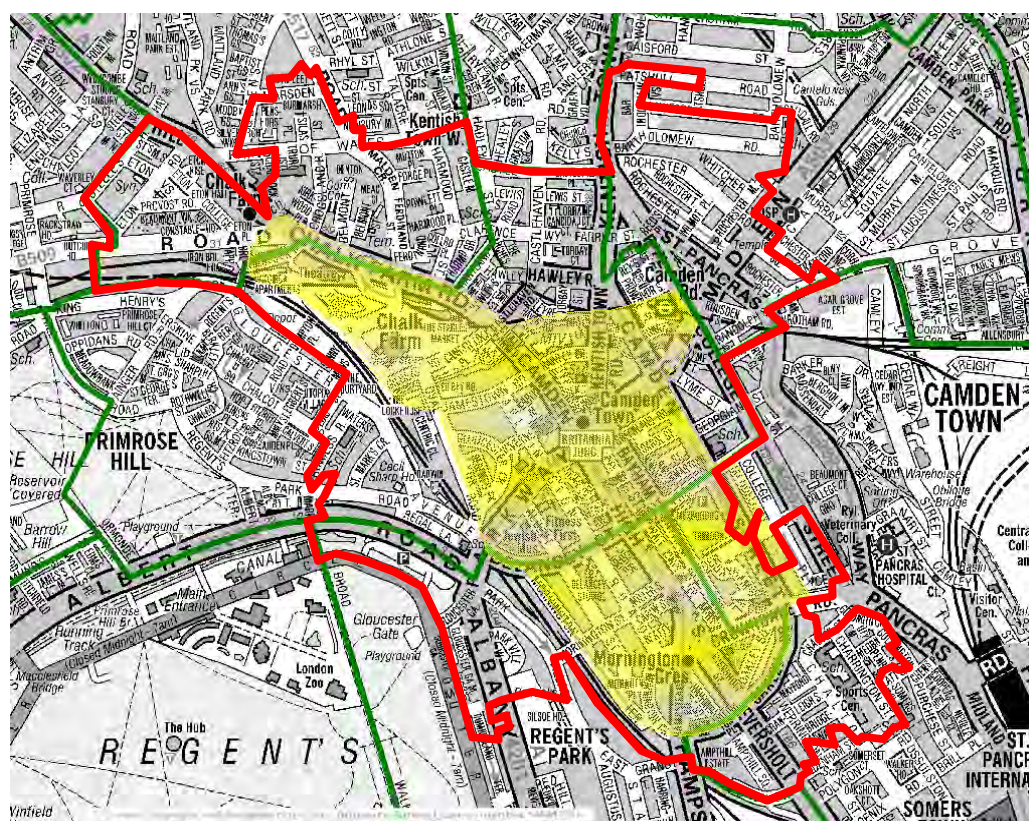
Designated Town Centre



■ Town Centre

Economic

Business Improvement District



Camden Town Unlimited

The maps contained in this document are used under licence

A-Z: Reproduced by permission of Geographers' A-Z Map Co. Ltd. © Crown Copyright and database rights OS 100017302

OS: © Crown copyright and database rights 2016 OS 100019726

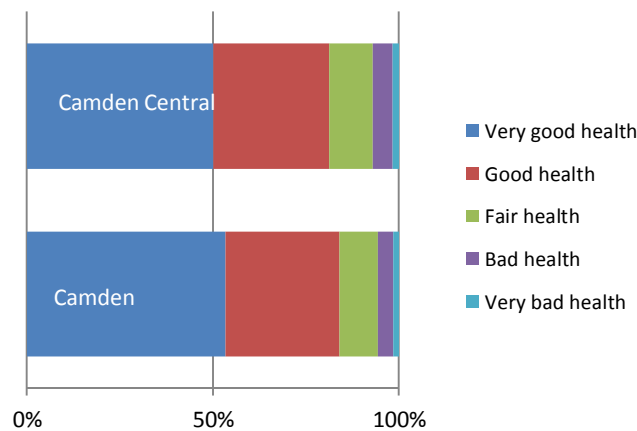
Economic

<div><div></div>Significantly different</div> <div><div></div>Significantly better</div> <div><div></div>Significantly worse</div>	Camden Central		Camden	Less	More	Variance	Range			
							Lowest		Highest	
	No	%	%					N'hood		N'hood
Economic Activity: Age 16-74										
% economically active	13687	66.6	68.1			-1.5	51.7	Euston	75.9	Belsize Park
% economically active: unemployed	1078	5.2	4.5			0.7	1.6	Highgate Hill	7.0	Gospel Oak
% economically active: full time student	915	4.4	3.8			0.6	1.7	Primrose Hill	8.5	Euston
% economically inactive	6876	33.4	31.9			1.5	24.1	Belsize Park	48.3	Euston
% economically inactive: retired	1365	6.6	6.9			-0.3	5.4	Camden NT	10.6	Primrose Hill
% economically inactive: ill health/disability	1219	5.9	4.4			1.5	1.2	Highgate Hill	8.6	Gospel Oak
Jobs										
Number of jobs	23400						600	Highgate Hill	55,400	Bloomsbury
Jobs per capita of persons of working age	1.1		2.1			-1.0	0.2	Gospel Oak	19.1	Holborn
Working hours10647										
% working part time	3121	29.3	22.9			6.4	18.8	Belsize Park	64.3	Somers Town
% working part time:men	1305	12.3	9.2			3.1	6.6	Belsize Park	14.9	Somers Town
% working part time: women	1813	17.0	13.7			3.3	11.0	Holborn	22.4	Euston
% working full time over 49 hours	2431	22.8	23.0			-0.2	11.5	Somers Town	31.5	Primrose Hill
% working 49+ hours men	1664	15.6	15.4			0.2	8.4	Somers Town	21.7	Hampstead
% working 49+ hours women	767	7.2	7.6			-0.4	3.1	Somers Town	10.8	Primrose Hill
Income										
MEAN Annual Household Income estimate	£42,820		£52,962			-£10,142	£31,472	Somers Town	£96,649	Highgate Hill
MEDIAN Annual Household Income estimate	£29,190		£39,847			-£10,657	£23,520	Somers Town	£73,024	Highgate Hill
Benefits claimants 16-74										
% receiving Job Seekers Allowance	460	3.4	1.7			1.7	0.5	Highgate Hill	4.8	Somers Town
% receiving ESA and Incapacity Benefit	1775	13.0	6.4			6.6	3.6	Highgate Hill	20.5	Gospel Oak
% lone parents receiving Lone Parent Allowance	265	29.1	26.8			2.3	0.0	Highgate Hill	41.7	Somers Town
% receiving other income related benefits	80	0.6	0.3			0.3	0.0	H. Hill, P'mnt Hill &	1.6	Clerkenwell
% TOTAL out of work benefits	2580	18.9	9.3			9.5	4.2	Highgate Hill	29.9	Somers Town
% of families receiving tax credits	2125	80.2	61.8			18.4	5.3	Highgate Hill	91.0	Somers Town

Income deprivation (Camden Town with Primrose Hill ward)										
% income deprivation	19.5		19.1			0.4	7.1	Hampstead	34.4	Somers Town
% child poverty	33.1		36.3			-3.2	9.8	Hampstead	52.3	Kilburn Priory
% older people in deprivation	31.6		30.8			0.8	14.1	Hampstead	49.1	Somers Town
Childcare availability										
Number of nurseries	7							N/A		N/A
Number of nursery places	182							N/A		N/A
Number of child minders	18							N/A		N/A
Number of childminding places	64							N/A		N/A
Childcare places per child under 5 (0-5)	1,467	0.16	0.27			-0.1	0.02	P'mnt Hill & Heath	1.1	Highgate Hill
Housing tenure (persons)										
% owned	6299	24.1	32.0			-7.9	9.8	Euston	77.2	Highgate Hill
% shared ownership	149	0.6	0.6			-0.1	0.1	Clerkenwell	1.9	Kings Cross
% social rented	12128	46.4	34.7			11.8	1.9	Highgate Hill	68.6	Somers Town
% rented from the council	9610	36.8	24.9			11.9	1.4	Highgate Hill	55.7	Gospel Oak
% private rented	7252	27.8	31.1			-3.4	14.5	Gospel Oak	49.9	Fitzrovia
% living rent free	289	1.1	1.6			-0.5	1.0	W. Hampstead	3.3	Fitzrovia
Socio-economic group: 16-74										
% higher managerial, administrative and professional	3133	15.2	19.1			-3.9	6.9	Euston, S. Town	29.9	Highgate Hill
% lower managerial, administrative and professional	4782	23.3	26.2			-2.9	12.9	Euston	36.7	Highgate Hill
% intermediate occupations	1688	8.2	7.9			0.3	4.9	Fitzrovia	9.7	Gospel Oak
% small employers and own account workers	1633	7.9	7.5			0.4	4.5	Fitzrovia	11.2	Highgate Hill
% lower supervisory and technical	858	4.2	3.4			0.8	2.1	H'mpstd, H. Hill, R.	5.6	Gospel Oak
% semi-routine occupations	1832	8.9	7.2			1.8	3.1	Highgate Hill	12.6	Gospel Oak
% routine occupations	1302	6.3	4.8			1.6	1.6	Highgate Hill	9.0	Gospel Oak
% never worked	1584	7.7	5.9			1.8	1.9	Highgate Hill	13.1	Somers Town
% long term unemployed	411	2.0	1.8			0.2	0.4	Highgate Hill	2.9	Clerkenwell
% not classified	3340	16.2	16.3			-0.1	6.8	Primrose Hill	43.5	Fitzrovia

Health & Well-being

General health



81.3% of residents rate their health as good or very good, compared to the Camden average (84%)

Life expectancy



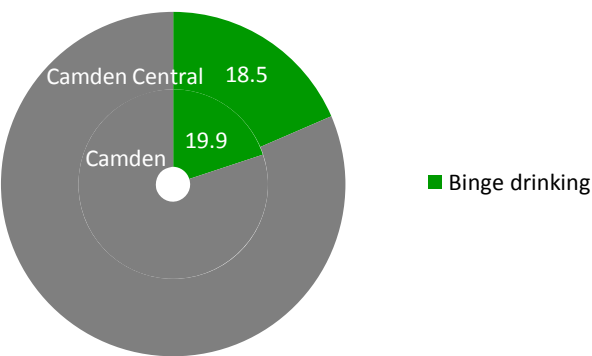
Causes of death

Primary: **Cancer**
Secondary: **Cardiovascular disease**

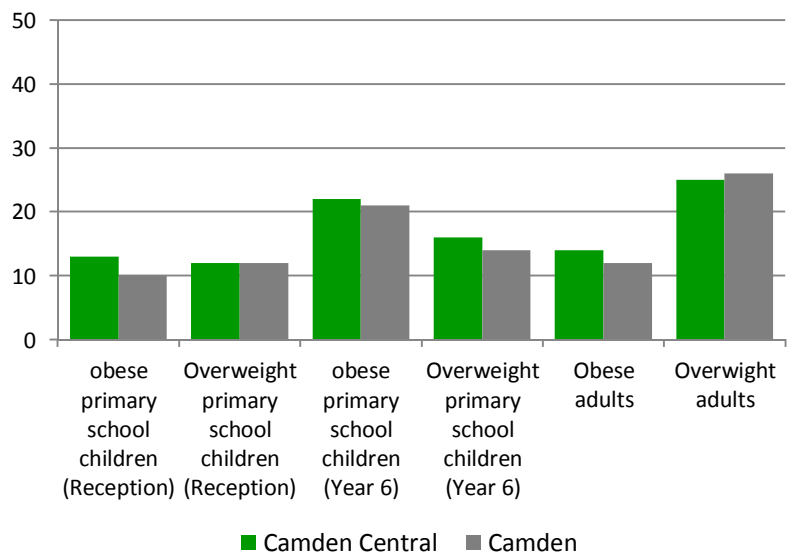
Smoking

There are **5,569 smokers** in Kings Cross.
Smoking prevalence is 25% compared to 20% for Camden

Alcohol consumption



Overweightness and obesity



Mental health conditions

2% of residents have diagnosis of serious mental illness

16% of residents have a diagnosis of either anxiety or depression

Health & Well-being

<div><div>Significantly different</div><div>Significantly better</div><div>Significantly worse</div></div>	Camden Central		Camden	Less	More	Variance	Range			
							Lowest		Highest	
								N'hood		N'hood
	No	%	%							
Wellbeing										
Level of life satisfaction		7.1	7.2			-0.1	7.0		7.6	Highgate Hill
Level of happiness		7.0	7.1			-0.1	6.9		7.4	Highgate Hill
Level of worthwhileness		7.4	7.4			0.0	7.2		7.8	Highgate Hill
Life expectancy (Camden Town with Primrose Hill ward)										
Men		82.3	79.0			3.3	76.1	K. Town ward	84.9	Belsize ward
Women		85.5	84.0			1.5	79.4	K. Town ward	88.8	H&CG ward
General health										
% very good health	13211	50.1	53.4			-3.3	44.2	Gospel Oak	85.0	Primrose Hill
% good health	8227	31.2	30.6			0.7	9.5	Primrose Hill	33.2	Covent Garden
% fair health	3068	11.6	10.4			1.2	4.4	Primrose Hill	14.5	Somers Town
% bad health	1378	5.2	4.2			1.1	1.0	Primrose Hill	7.1	Gospel Oak
% very bad health	468	1.8	1.4			0.3	0.0	Primrose Hill	2.8	G. Oak, S. Town
Main causes of death										
Primary	Cancer						N/A		N/A	
Secondary	CVD						N/A		N/A	
Healthy eating (CTwPH ward)										
% of adults eating healthily		40.5	41.6			-1.1	29.8	S. Town MSOA	51.3	Hampstead ward
Overcrowding										
% person living in overcrowding	6826	26.0	20.2			5.8	5.0	Highgate Hill	33.0	Somers Town
Obesity										
% obese primary school children (Reception class)	88	13.0	10			3.0	5.0	Dartmouth Park	16.0	Euston
% overweight primary school children (Reception class)	82	12.0	12			0.0	6.0	Euston	16.0	Gospel Oak
% obese primary school children (Year 6)	139	22.0	21			1.0	11.0	Camden NT	29.0	Euston
% overweight primary school children (Year 6)	104	16.0	14			2.0	8.0	Dartmouth Park	22.0	Euston
% obese adults	2,249	14.0	12			2.0	9.0	Bloomsbury	19.0	G. Oak, S. Town
% overweight adults	4,144	25.0	26			-1.0	17.0	Fitzrovia	32.0	Clerkenwell

Alcohol consumption										
% adults binge drinking (Bloomsbury, Kinbgs Cross, H&CG wards)		18.5	19.9			-1.4	12.3	S. Town MSOA	24.8	H&CG ward
% higher or increased risk drinkers	1,641	9.0	7			2.0	3.0	Regents Park	12.0	Camden NT
Smoking prevalence and mortality										
Number of smokers	5,569						N/A		N/A	
% smoking prevalence	25	20				5.0	12.0	Fitzrovia, H. Hill	27.0	Gospel Oak
Average number of deaths from lung cancer or COPD	213						N/A		N/A	
Rate of deaths lung cancer COPD per 1,000	1.5	0.8				0.7	0.6	Covent Garden	2.9	Euston
Average number of deaths from heart disease	27						N/A		N/A	
Rate of deaths lung cancer COPD per 1,000	1.9	1.0				0.9	0.6	Clerkenwell, Holbo	2.2	Kilburn Priory
Mental health conditions										
% diagnosis of serious mental health illness	458	2.0	2			0.0	0.0	Fitzrovia	2.0	
% diagnosis of either anxiety or depression	3689	16.0	15			1.0	6.0	Fitzrovia	19.0	Gospel Oak

Environment & Transport

Land



The total land area of Camden Central is **202.853 hectares**

9.9% of land in Camden Central is public green space

Access to parks and nature

75.1% of homes in Camden Central have access to a local, small or pocket park

91.9% of homes in Camden Central have access to nature

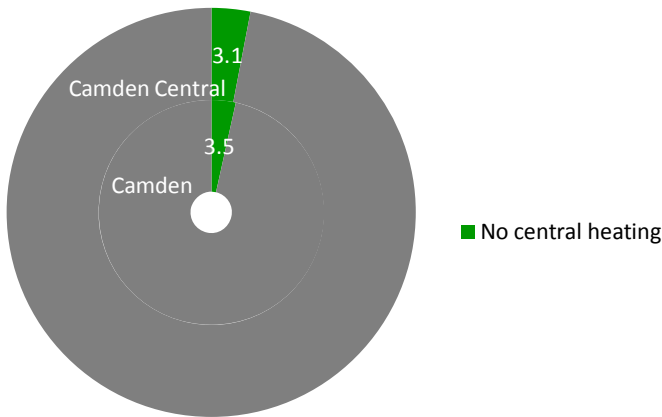
Transport

Camden Central has an average **public transport accessibility** score of **6.6** (out of 8)

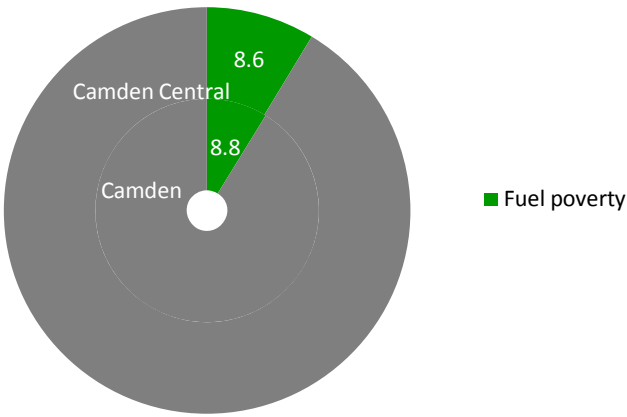
Main roads

The main roads in Camden Central are:
Camden High Street
Haverstock Hill
Kentish Town Road
Bayham Street
Royal College Street
Eversholt Street
Hampstead Road
Camden Road

Central heating

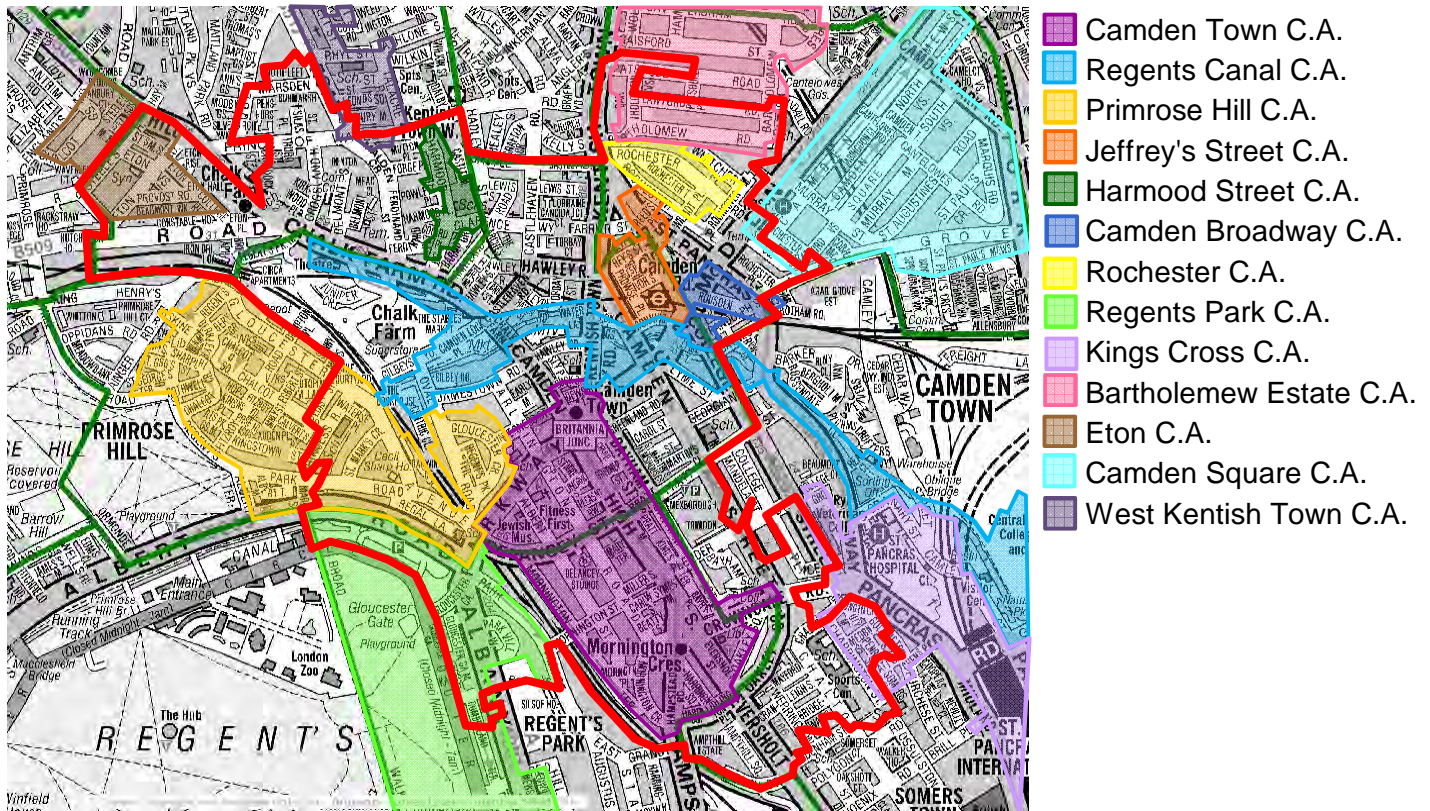


Fuel

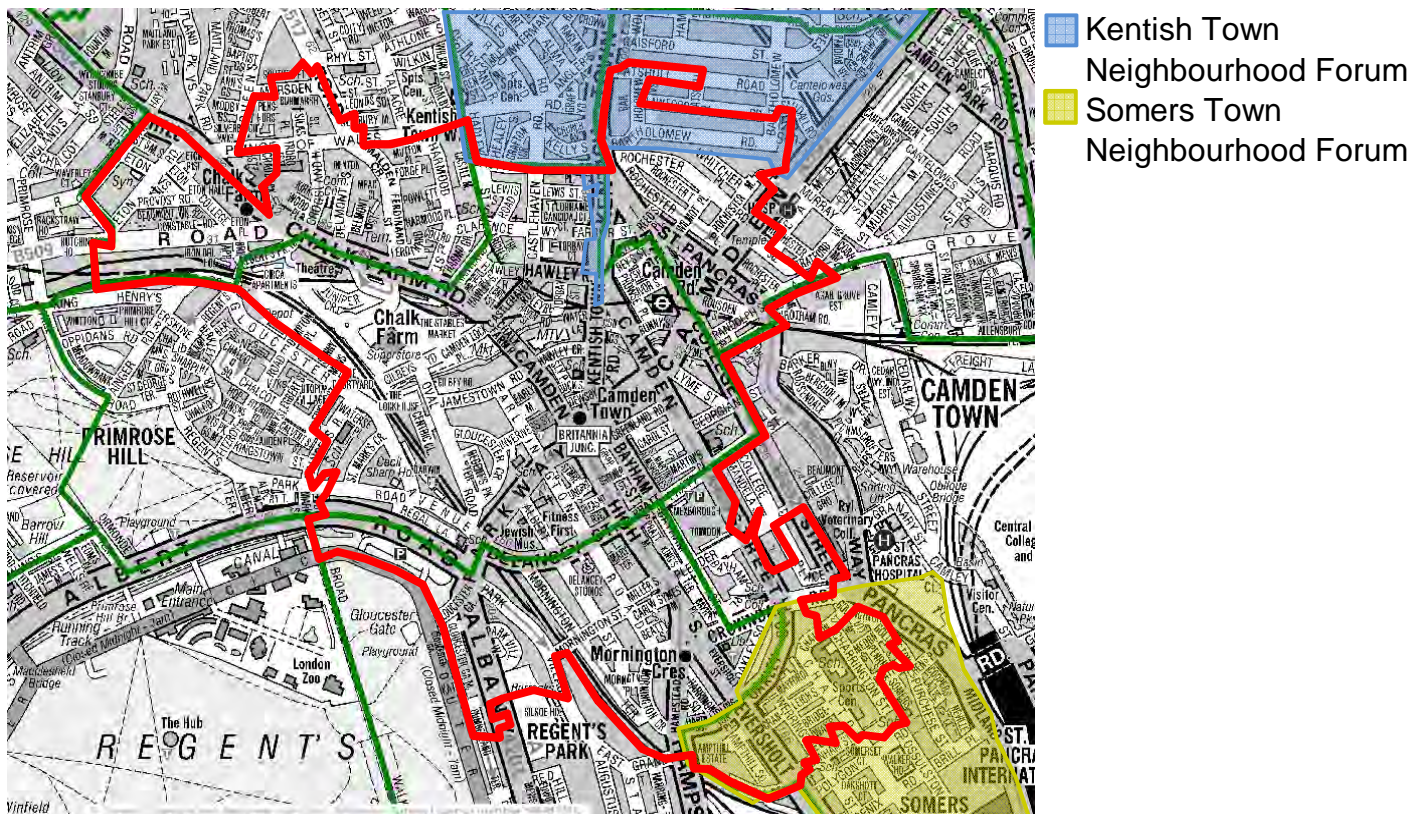


Environment and Transport

Conservation areas



Neighbourhood Planning Area and Forum



The maps contained in this document are used under licence

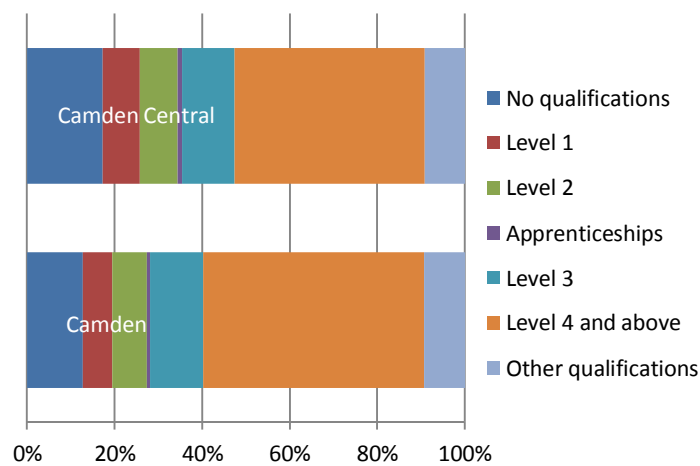
A-Z: Reproduced by permission of Geographers' A-Z Map Co. Ltd. © Crown Copyright and database rights OS 100017302
OS: © Crown copyright and database rights 2016 OS 100019726

Environment & Transport

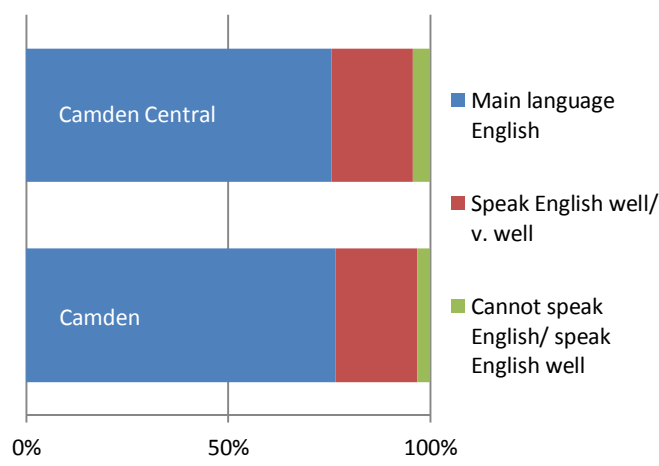
<div><div>Significantly different</div><div>Significantly better</div><div>Significantly worse</div></div>	Camden Central		Camden	Less	More	Variance	Range				
							Lowest		Highest		
								N'hood		N'hood	
Land											
Total area (hectares)	202.853						33.599	Euston	385.346	Hamsptead	
Land use											
Domestic gardens (hectares)	28.079			<div><div></div><div></div></div>			N/A		N/A		
Public green space (hectares)	20.084						N/A		N/A		
% of total land area that is public green space	9.9		24.8			<div></div>	-14.9	1.6	Covent Garden	73.0	P'mnt Hill & Heath
Public green space per capita (square metres)	7.45		24.50			<div></div>	-17.1	1.3 sqm	Covent Garden	599.3 sqm	Highgate Hill
Access to nature and parks (CTwPH ward)											
% homes deficient access to regional park	46.1			<div><div></div><div></div></div>			0.0		100.0		
% homes deficient access to metropolitan park	0.0						0.0		16.7		
% homes deficient access to district park	6.0						0.0		100.0		
% homes deficient access to LSPP	24.9						0.0		65.7		
% homes deficient access to nature	8.1						0.0		98.2		
Transport											
Number of bus routes	19			<div><div></div><div></div></div>			N/A		N/A		
Number of Underground stations	3						N/A		N/A		
Number of Overground stations	1						N/A		N/A		
% that travel to work by bicycle	904	4.4	6.5			<div></div>	-2.1	8.9	Dartmouth Park	2.2	Fitzrovia
Public transport accessibility level (PTAL) score	6.6		5.6			<div></div>	1.0	2.8	Highgate Hill	8.0	H'brn, C. G'dn, C'wll
Number of cars or vans in the area	4,648							N/A		N/A	
% households with 2 or more cars or vans	636	5.5	7.1			<div></div>	-1.6	0.6	Camden New Town	34.9	Highgate Hill
Main roads	Camden High St, Haverstock Hill, Kentish Town Rd, Bayham St, Royal College St, Eversholt St, Hampstead Rd, Camden Rd										
Annual air emmissions (CTwPH ward)											
Particulate matter (PM10) range	19.7			<div><div></div><div></div></div>			18.3	Highgate ward	21.5	H&CG ward	
Nitrogen oxide (NOx) range	67						52.0	Highgate ward	92.2	H&CG ward	
Nitrogen dioxide (NO2) range	39.7						33.8	Highgate ward	49.6	H&CG ward	
Central heating and fuel											
% households with no central heating	357	3.1	3.5	<div><div></div><div></div></div>		-0.4	1.9	Highgate Hill	6.2	Holborn	
% households in fuel poverty	939	8.6	8.8			-0.2	7.0	Regents Park	14.5	Fitzrovia	

Knowledge, Skills & Experience

Qualifications



English language proficiency



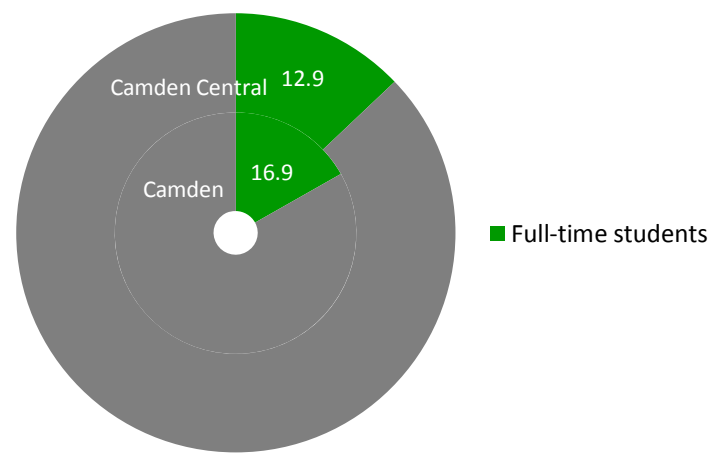
Industry

There are more working age residents employed in **professional, technical and science** than any other industry

Work skills & experience

The top work experience skill in Camden Central is **artistic, literary and media**

Full-time students



There are **3,470** full-time students living in Camden Central

Knowledge, Skills & Experience

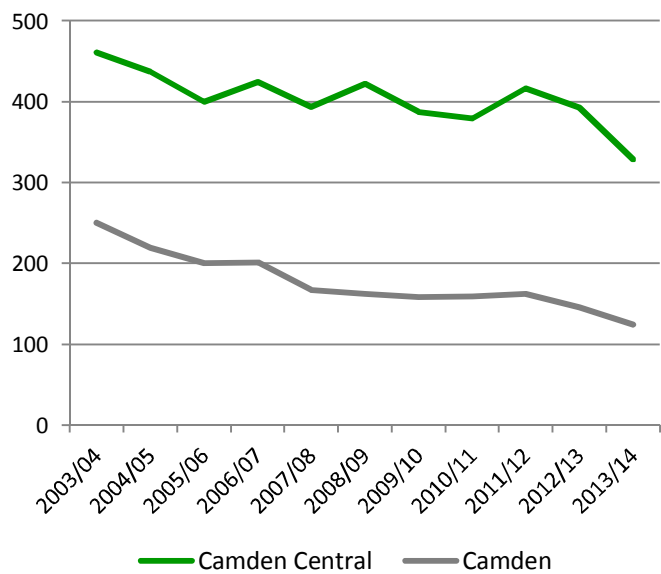
<div><div>Significantly different</div><div>Significantly better</div><div>Significantly worse</div></div>	Camden Central		Camden	Less	More	Variance	Range			
							Lowest		Highest	
		No	%	%				N'hood		N'hood
Qualifications: Age 16 and Over										
% with no qualifications	3776	17.3	12.7			4.6	4.9	Highgate Hill	25.2	Gospel Oak
% with Level 1: 4 O Levels/GCSEs/CSEs/NVQ Level 1	1866	8.5	6.8			1.7	3.9	Fitzrovia	11.8	Gospel Oak
% with Level 2: 5+ O Levels etc (A*-C), 1 A Level, NVQ Level 2	1872	8.6	7.8			0.7	4.9	Fitzrovia	10.8	Somers Town
% on Apprenticeships	228	1.0	0.8			0.2	0.4	Fitzrovia	1.4	Holborn
% with Level 3: 2 A Levels, NVQ Level 3	2623	12.0	12.1			-0.1	7.0	Primrose Hill	30.1	Fitzrovia
% with Level 4 and above: Batchelors degree, Masters degree, PhD, NVQ Level 4 and above	9502	43.4	50.5			-7.1	26.7	Somers Town	65.2	Highgate Hill
% with other qualifications: Vocational/work qualifications, foreign n-sp	2010	9.2	9.2			0.0	5.5	Highgate Hill	12.5	Kilburn Priory
Education (CTwPH ward)										
% achieving KS4 GCSE 5+ A*-C (inc English & Maths)	61.6		59.9			1.7	48.9	H. Town ward	69.1	R. Park Ward
Proficiency in English: Age 3 and over										
% whose main language English	19266	75.6	76.5			-0.9	66.9	Somers Town	92.6	Highgate Hill
MLNE: % that speak English very well	3058	12.0	12.8			-0.8	4.9	Highgate Hill	17.5	Covent Garden
MLNE: % that speak English well	2042	8.0	7.4			0.6	2.0	Highgate Hill	11.4	Somers Town
MLNE: % that cannot speak English well	942	3.7	2.7			1.0	0.5	Highgate Hill	6.0	Somers Town
MLNE: % that cannot speak English	172	0.7	0.5			0.2	0.0	Highgate Hill	1.1	Somers Town
Full-time students										
No. of full time students	3,470						N/A		N/A	
% of residents that are full time students	12.9		16.9			-4.0	5.7	Primrose Hill	38.6	Euston
Industry										
Top three industries residents employed (highest first)	Professional, technical and scientific									
	Wholesale and retail									
	Information and communication									
Occupation										
Rank of top 5 work skills and knowledge (highest first)	Artistic, literary and media									
	Business research and administration									
	Teaching and education									
	Sales and customer services									
	Elementary administration and services									

MLNE: Main language not English

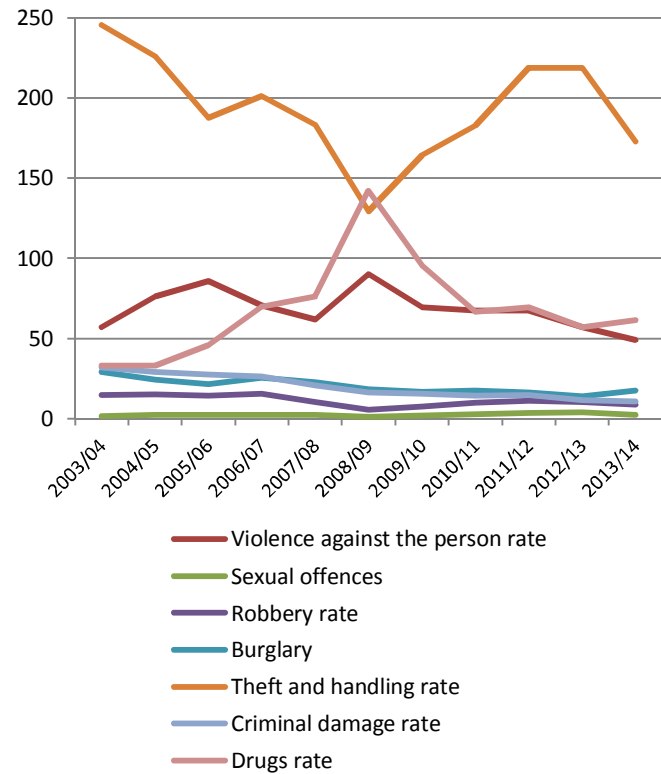
Community

Community safety

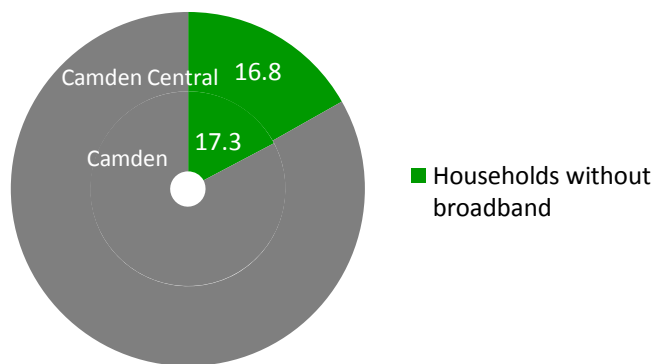
Total crime rate (2003/4-2013/14)



Notifiable crimes rate (2003/4-2013/14)



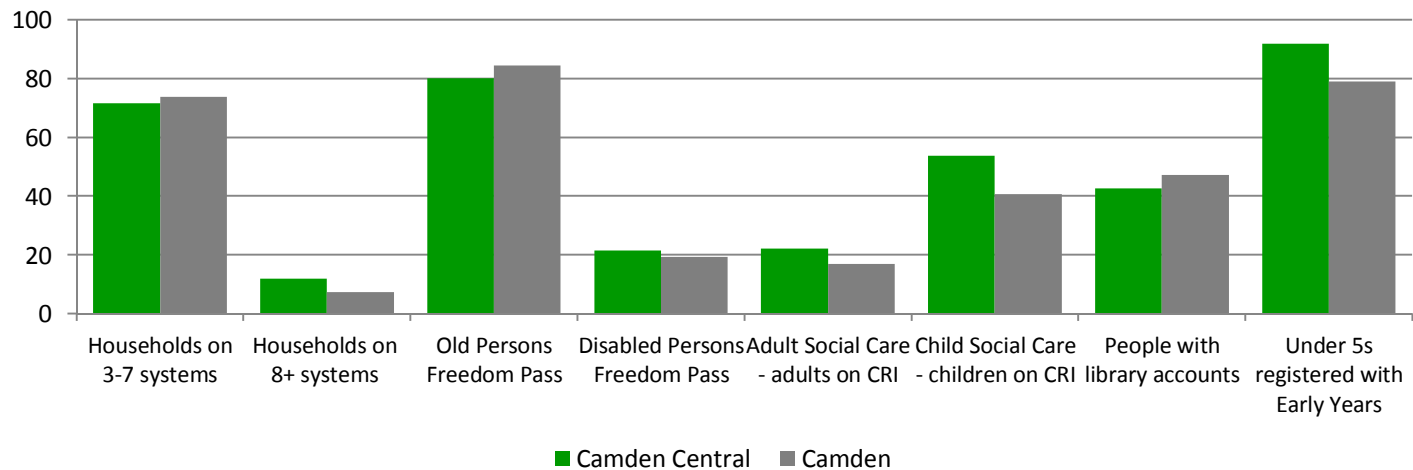
Digital inclusion



Caring responsibilities

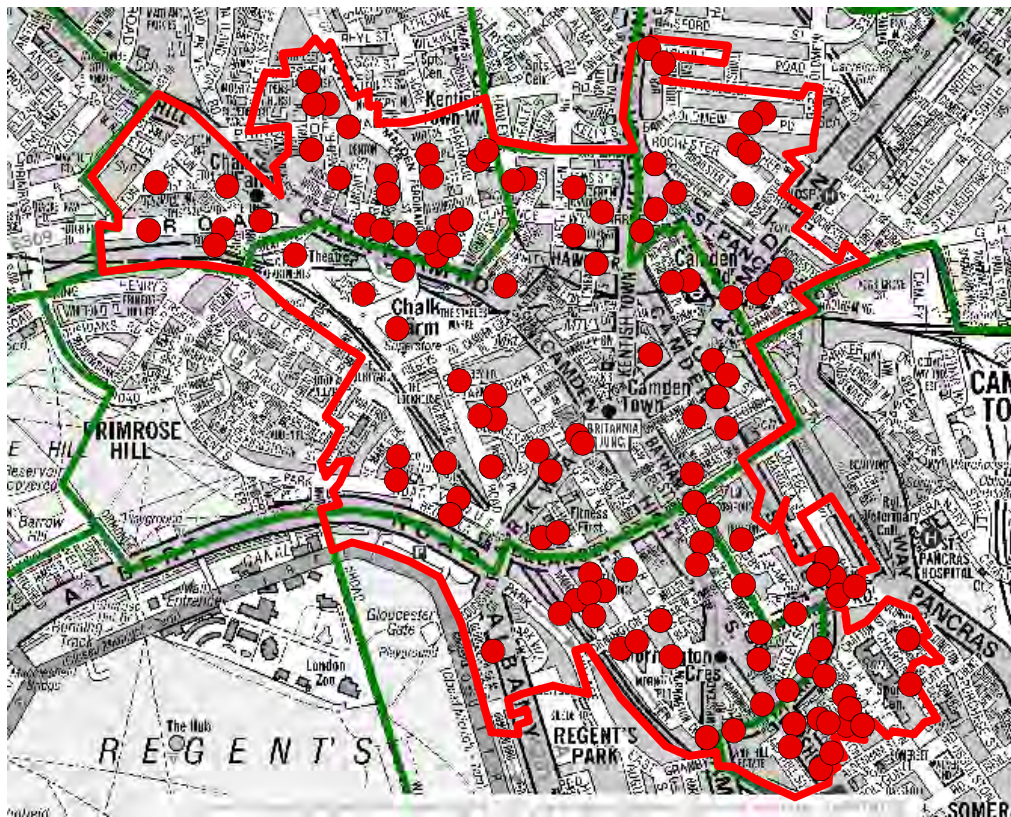
There are **2318 carers** in Camden Central equating to 8.8% of the overall population

Use of services



Community

Broadband non-adopting households



● 5 or more non-adopting households

Community

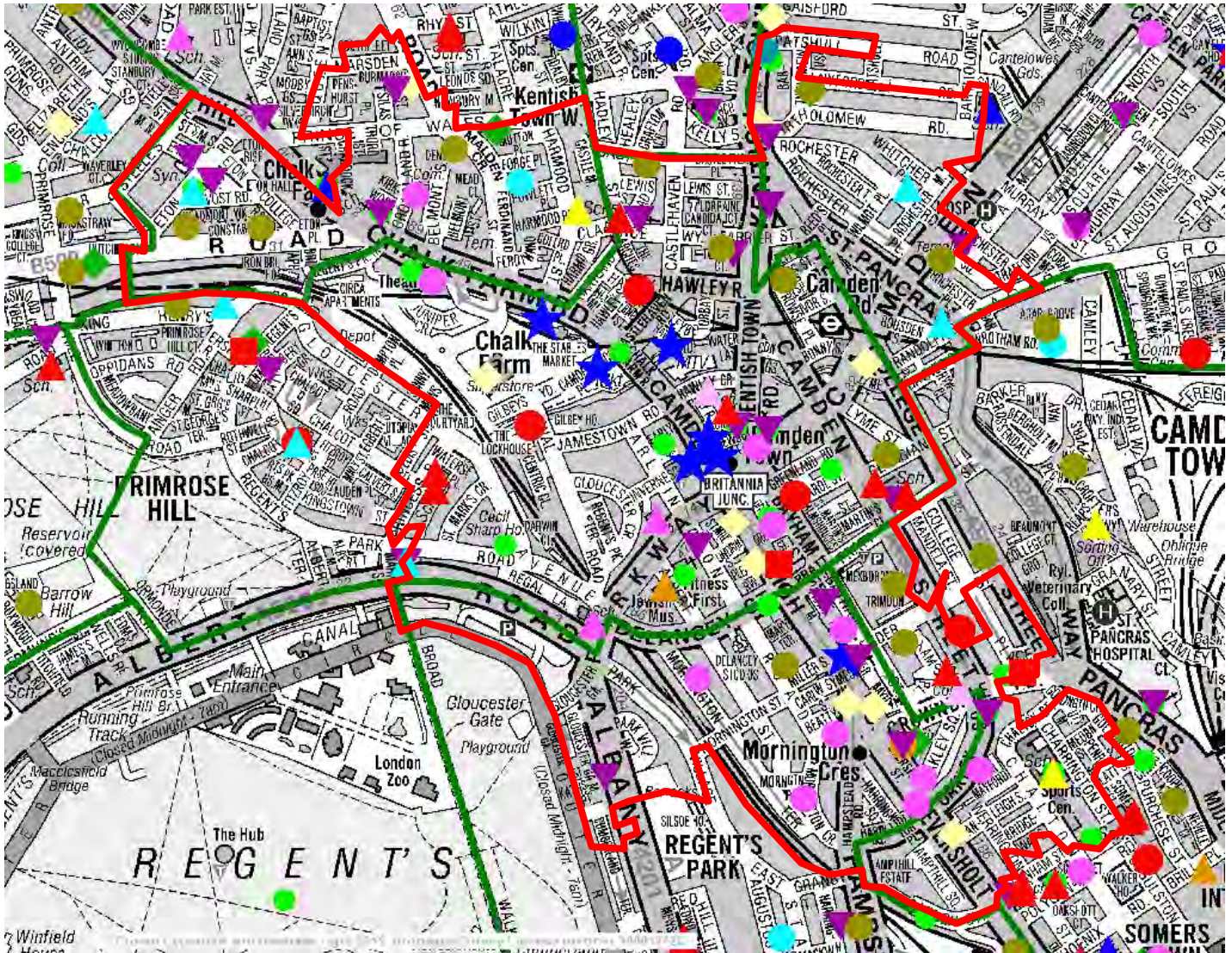
Crime rates 2003/4-2013/14 (Camden Town with Primrose Hill ward)

Community safety	2003/04	2004/05	2005/06	2006/07	2007/08	2008/09	2009/10	2010/11	2011/12	2012/13	2013/14
Crime rate	460.4	437.2	399.5	424.4	393.1	421.7	387.4	379.0	416.1	392.4	328.3
Violence against the person rate	57.0	76.2	85.8	70.7	62.0	90.0	69.4	67.3	67.4	57.2	49.1
Sexual offences	1.4	2.5	2.4	2.3	2.3	1.2	2.0	2.8	3.6	3.9	2.5
Robbery rate	14.7	15.0	14.2	15.7	10.5	5.6	7.5	10.1	11.3	10.4	8.6
Burglary	29.2	24.1	21.7	25.4	22.8	18.2	16.7	17.5	16.2	14.1	17.5
Theft and handling rate	245.3	225.8	187.6	201.1	183.1	129.4	164.5	182.8	218.7	218.8	172.9
Criminal damage rate	32.1	29.1	27.6	26.4	20.8	16.5	15.6	14.3	14.8	11.7	10.6
Drugs rate	33.2	33.0	45.8	69.8	76.4	142.2	95.6	66.5	69.5	57.2	61.5

Community

<div><div>Significantly different</div><div>Significantly better</div><div>Significantly worse</div></div>	Camden Central		Camden	Less	More	Variance	Range			
							Lowest		Highest	
								N'hood		N'hood
Community safety (Camden Town with Primrose Hill ward)						Ward		Ward		
Crime rate	328.3		124.4			203.9	53.0	Belsize	328.3	CTwPH
Violence against the person rate	49.1		20.2			28.9	8.0	Belsize	49.1	CTwPH
Sexual offences	2.5		1.5			1.0	0.0	Belsize	3.4	Bloomsbury
Robbery rate	8.6		4.1			4.5	0.3	H'mpst'd Town	11.0	Bloomsbury
Burglary	17.5		13.6			3.9	7.0	Belsize	30.4	H&CG
Theft and handling rate	172.9		67.1			105.8	19.7	Gospel Oak	233.9	Bloomsbury
Criminal damage rate	10.6		6.9			3.7	4.0	Belsize, Hampstea	12.6	H&CG
Drugs rate	61.5		9.0			52.5	1.6	H'mpst'd Town	61.5	CTwPH
Caring responsibilities						Neighbour'h'd		Neighbour'h'd		
Total number of carers	2,318						N/A		N/A	
% of residents that are carers	8.8		7.9			0.9	5.5	Fitzrovia	10.0	P'mnt Hill & Heath
% carers providing 1-19 hours unpaid care	1408	60.7	66.7			-6.0	54.3	Regents Park	80.0	Highgate Hill
% carers providing 20-49 hours unpaid care	402	17.3	14.1			3.3	9.7	Highgate Hill	21.7	Clerkenwell
% carers providing 50+ hours unpaid care	508	21.9	19.2			2.7	10.3	Highgate Hill	26.7	Somers Town
Digital inclusion										
% households without broadband	2223	16.8	17.3			-0.5	15.6	W. Hampstead	26.5	Somers Town
Use of services										
% households on 3-7 systems	8212	71.6	73.7			-2.1	53.5	Fitzrovia	79.6	Dartmouth Park
% households on 8 or more systems	1367	11.9	7.4			4.5	0.7	Highgate Hill	20.4	Somers Town
% citizens on 3-7 systems	11097	41.2	34.2			6.9	15.5	Fitzrovia	60.2	Somers Town
% citizens on 8 or more systems	13	0.0	0.021			0.0	0.0		0.06	Holborn
% disabled people using accessible transport	4126	15.3	16.3			-1.0	13.6	Euston	25.7	Highgate Hill
% older people using OPFP (Old Persons Freedom Pass)	2969	80.0	84.3			-4.2	76.3	Gospel Oak	89.6	P'mnt Hill & Heath
% disabled people using DPFB (Disabled Persons Freedom Pass)	978	21.6	19.4			2.2	2.4	Highgate Hill	25.6	Camden NT
% disabled people using Blue Badges	788	17.4	19.1			-1.7	13.8	Bloomsbury	31.1	Highgate Hill
% adults on council's Adult Social Care system	4723	22.1	16.8			5.3	7.6	Highgate Hill	30.1	Somers Town
% children on council's Child Social Care system	2665	53.7	40.7			13.0	9.1	Highgate Hill	73.5	Holborn
% people with library accounts	11488	42.6	47.1			-4.5	33.7	Camden NT	60.3	Gospel Oak
% under 5s registered with Early Years	1347	91.8	79.0			12.9	40.9	Highgate Hill	100.0	Camden NT

Community buildings



- | | |
|--------------------------|--|
| Children's centre | Primary school |
| Community centre | Special school |
| Day centre | Secondary school |
| GP surgery | Nursery school |
| Hall for hire | Independent school |
| Further/higher education | Job centre |
| Library | Police station |
| Market | Fire station |
| Museum | Citizens Advice |
| Pharmacist/chemist | Leisure centre |
| Places of worship | Tenants' and residents' hall/association |
| Post office | |

Indices of Multiple Deprivation

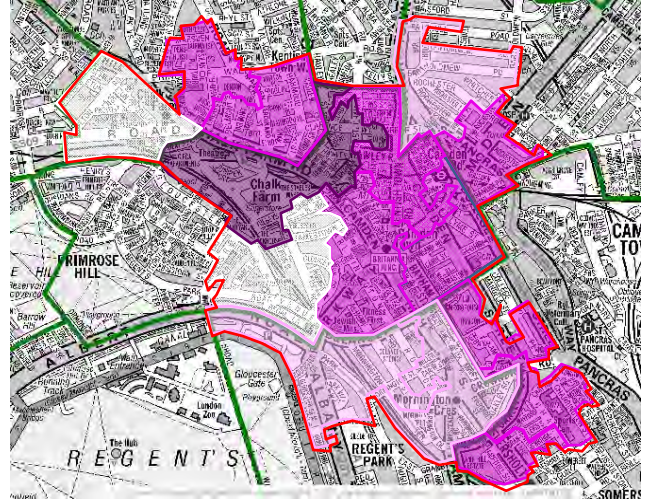
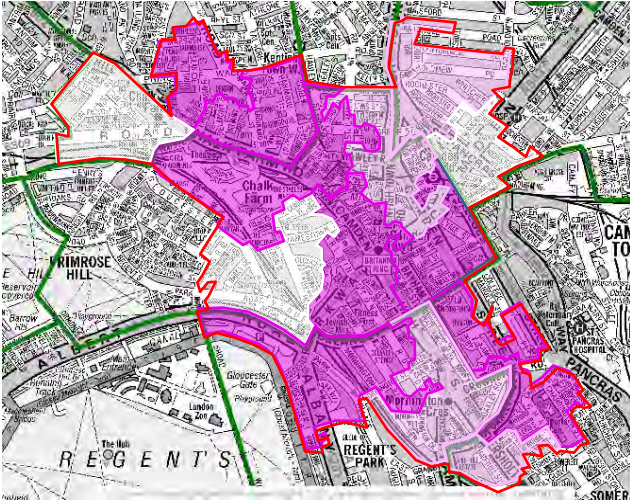
- Within 10% most deprived in England
- 10% to 20% most deprived in England

- 20% to 30% most deprived in England
- Not within most deprived 30% in England

2010

Most Deprived 30% LSOAs in England

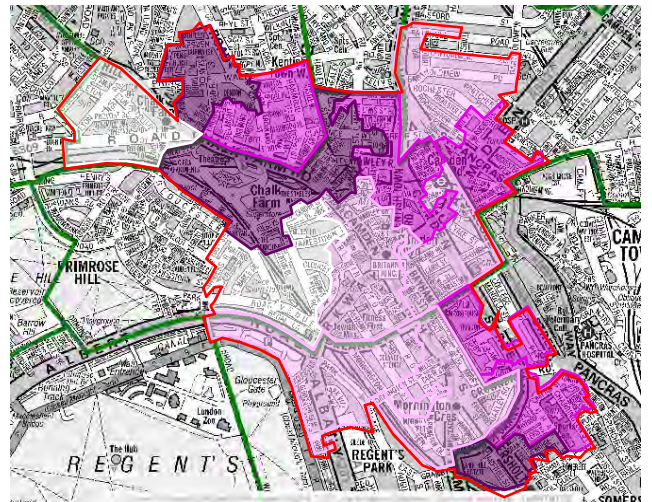
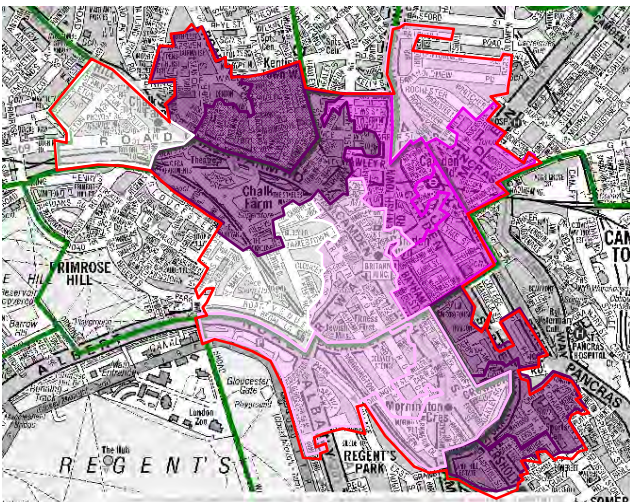
2015



2010

Income Deprivation

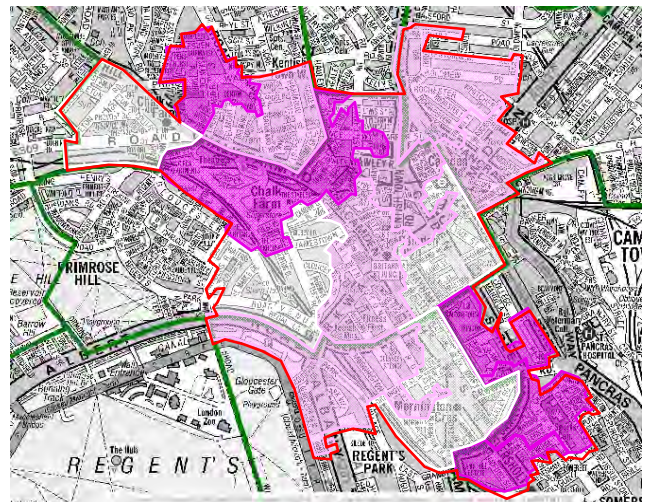
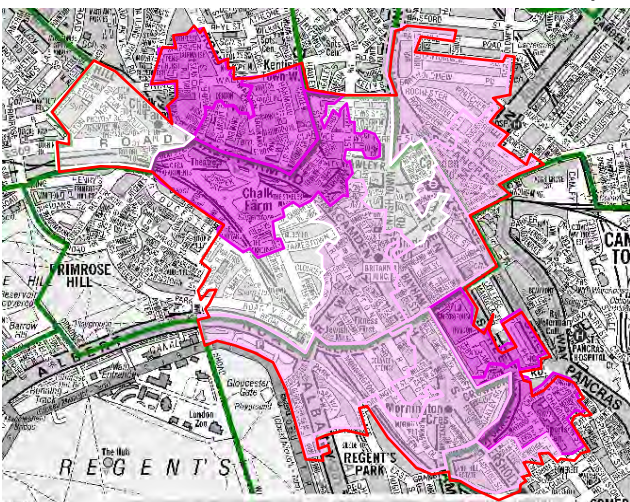
2015



2010

Employment Deprivation

2015



Indices of Multiple Deprivation

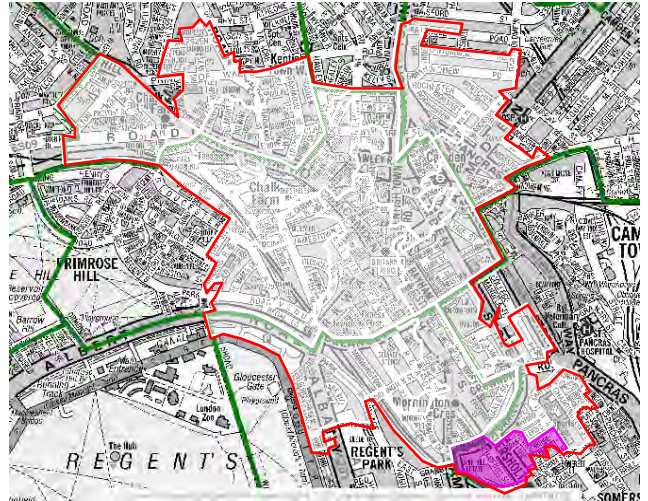
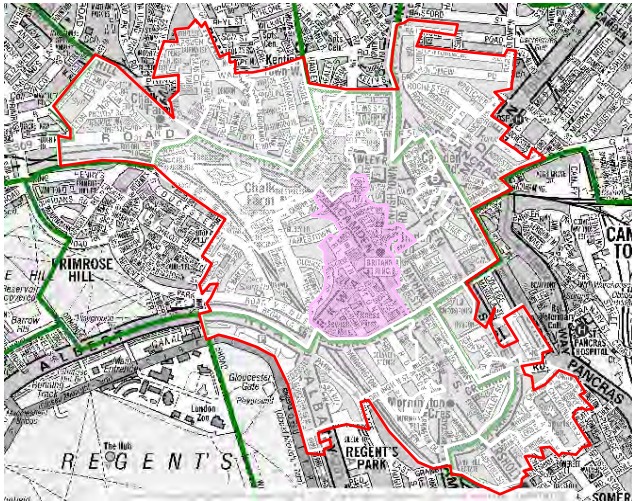
■ Within 10% most deprived in England
■ 10% to 20% most deprived in England

■ 20% to 30% most deprived in England
■ Not within most deprived 30% in England

2010

Education, Skills and Training Deprivation

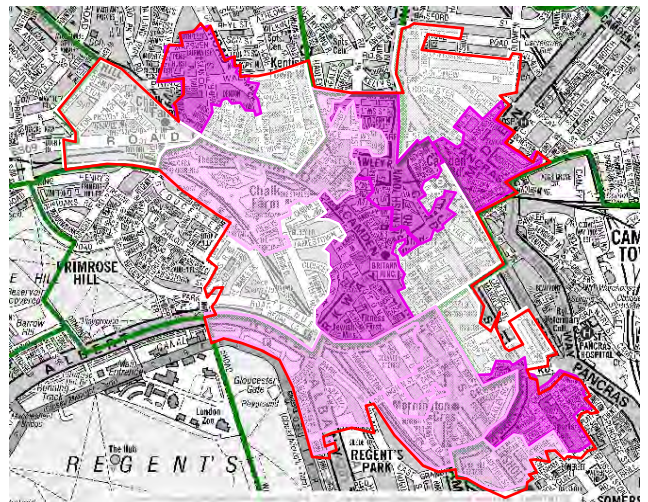
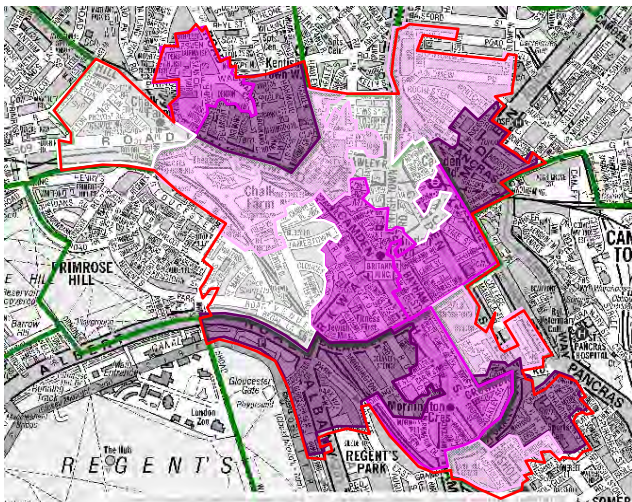
2015



2010

Health Deprivation and Disability

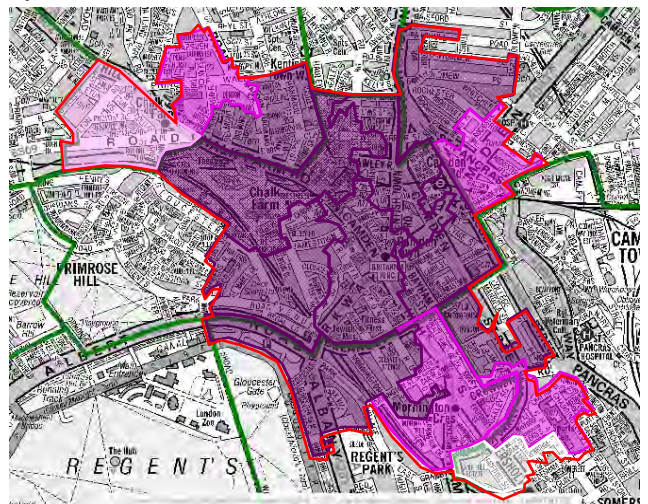
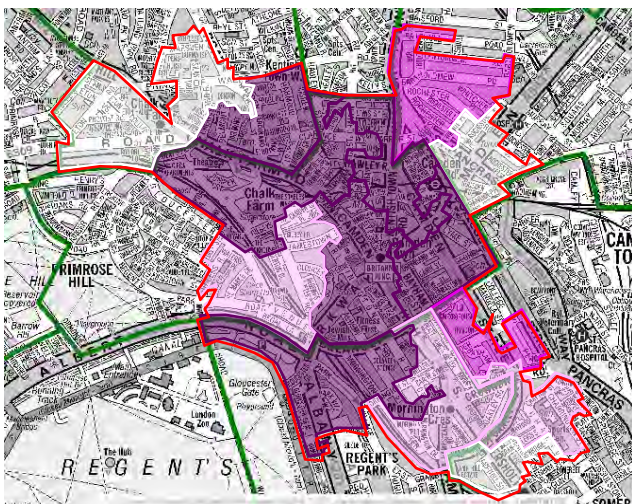
2015



2010

Crime & Disorder Deprivation

2015



Indices of Multiple Deprivation

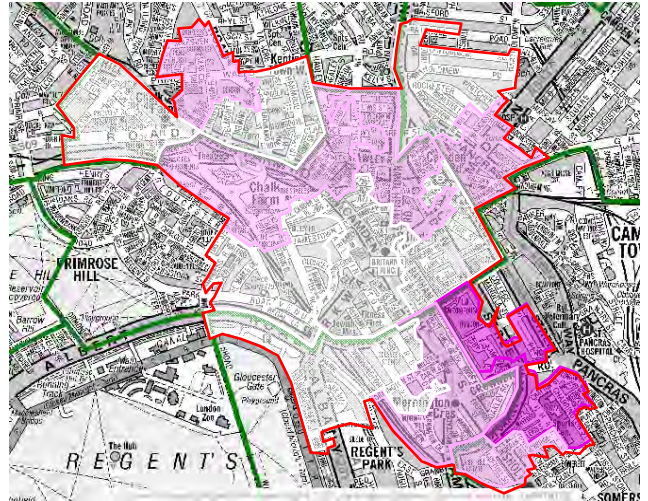
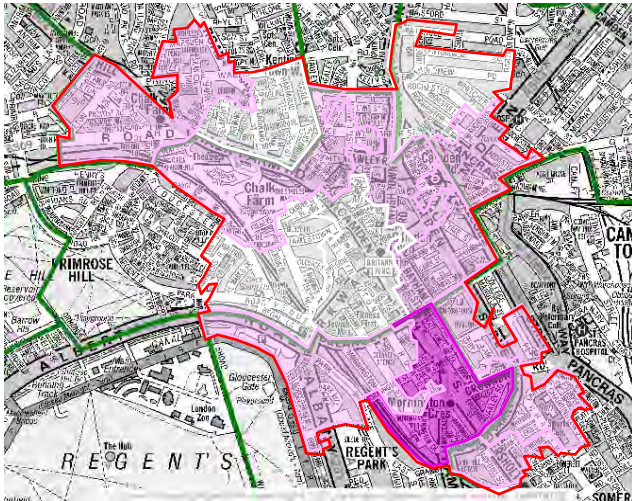
■ Within 10% most deprived in England
■ 10% to 20% most deprived in England

■ 20% to 30% most deprived in England
■ Not within most deprived 30% in England

2010

Barriers to Housing and Services Deprivation

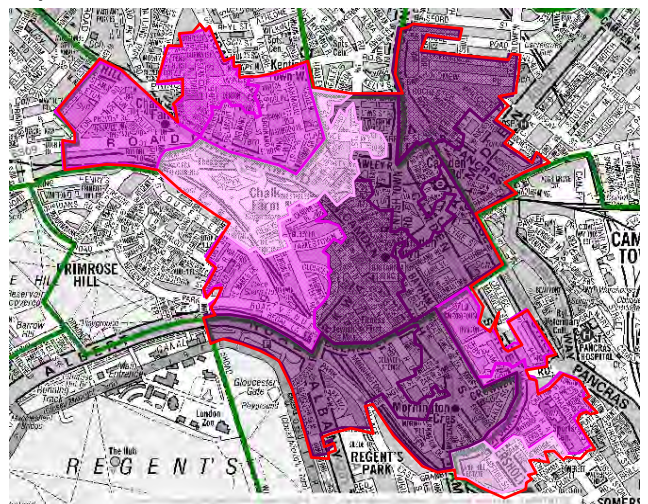
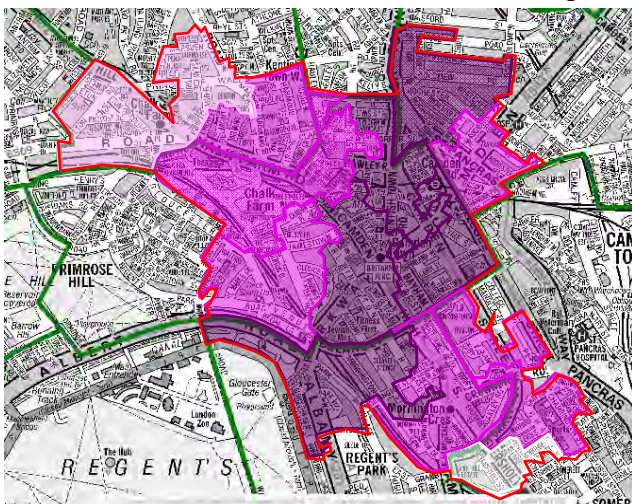
2015



2010

Living Environment Deprivation

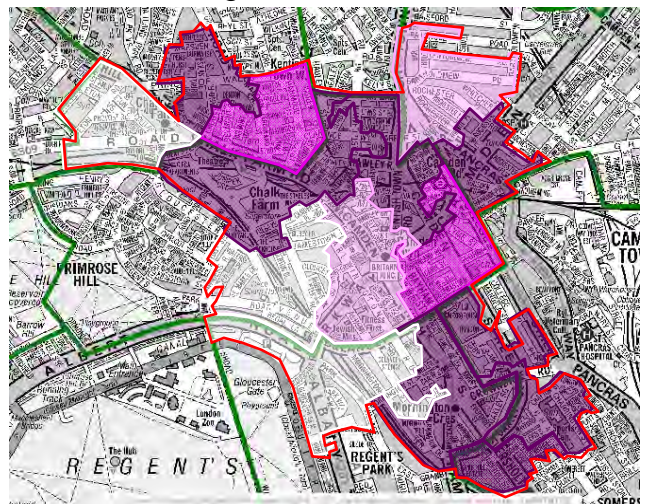
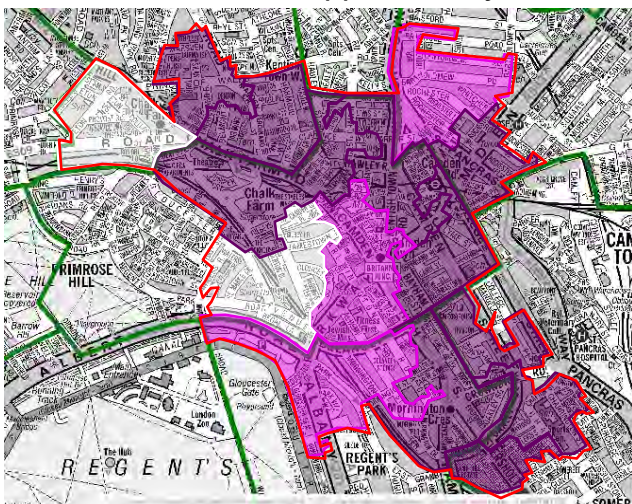
2015



2010

Supplementary index: Income Deprivation Affecting Children

2015



Indices of Multiple Deprivation

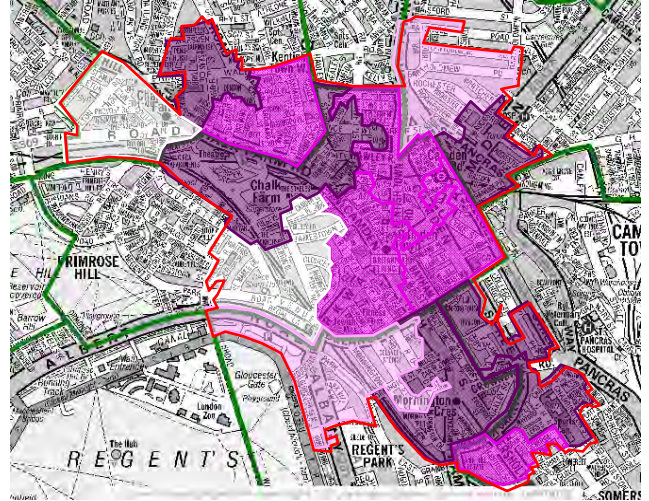
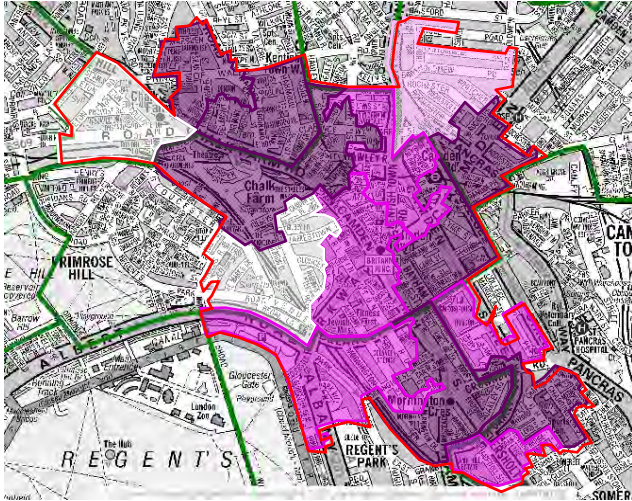
■ Within 10% most deprived in England
■ 10% to 20% most deprived in England

■ 20% to 30% most deprived in England
■ Not within most deprived 30% in England

2010

Supplementary index: Income Deprivation Affecting Older People

2015



IMD: technical information

7 domains of deprivation: weighting

Supplementary index
Income deprivation
affecting children



Income
22.5%

Supplementary index
Income deprivation
affecting older people



Employment
22.5%



Education
13.5%



Health & disability
13.5%



Crime
9.3%



Barriers to
housing and
services
9.3%



Living
environment
9.3%

Technical definitions

Income domain

- Adults and children in income support families
- Adults and children in income based Jobseeker's Allowance families
- Adults and children in Pension Credit (Guarantee) families
- Adults and children in certain Child Tax Credit families
- Asylum seekers receiving subsistence/ accommodation support

Employment domain

- Claimants of Jobseekers Allowance
- Claimants of Incapacity Benefit
- Claimants of Severe Disablement Allowance
- Claimants of Employment & Support Allowance
- Participants in New Deal for Under 25s
- Participants in New Deal for 25+
- Participants in New Deal for Lone Parents

Education, skills & training domain

Children:

- KS2 attainment
- KS3 attainment
- KS4 attainment
- Secondary school absence
- Staying on in education
- Entry to higher education

Skills:

- Adult skills

Health and disability domain

- Years potential life lost
- Comparative illness and disability ratio
- Acute morbidity
- Mood or anxiety disorders

Crime domain

Recorded crime rates for the following composite indicators:

Burglary

Violence

Theft

Criminal damage

Barriers to housing and services domain

Geographical barriers:

Road distance to a GP, supermarket or convenience store, primary school, post office

Wider barriers:

Overcrowding

Housing affordability

Homelessness

Living environment domain

Indoors living environment:

Housing in poor condition

Housing without central heating

Outdoor living environment:

Air quality

Road traffic accidents

Community Services

Arts and crafts

Working Men`s College

Careers' advice

Employability Team (Camden Council Integrated Early Years Service)

Harmoord Children`s Centre

Children's activities

Camden Town Library

Castlehaven Community Centre

Fairfield Playcentre

Family Information Service

Harmoord Children`s Centre

Integrated Early Years Service

Jewish Museum London

Ready Steady Go Camden

Reddot Academy Camden Rhino Turf

Salvation Army Chalk Farm Corps

South Hampstead Synagogue

St Martin`s Community Centre

Theatro Technis

Community Centre

Castlehaven Community Centre

St Martin`s Community Centre

St Pancras Community Centre

Cultural services

Art Box2

Arlington Gallery

Cecil Sharp House

Copy Cat Art

Etcetera Theatre Club

Good Worldwide

James Wigg Group Practice

Jewish Museum London

Lock One Batik Gallery

Painted Earth

Roundhouse

Shika Suki

The Hunterian Museum

Women and Health

Disabled people's services

Camden Children with Disabilities (MOSAIC) Kentish Town Health Centre

Kids - Kentish Town Health Centre

Drugs and alcohol advice

184

Alcohol Service

Ampthill Practice

CRI

Family and Parents Support Centre

James Wigg Group Practice

Mind in Camden

NSPCC Foundation 66 Family Alcohol Service

Thames Reach Spectrum Centre

English language classes

James Wigg Group Practice

Working Men`s College

Exercise classes

Charlie Ratchford Resource Centre

Castlehaven Community Centre

Elderly Local People Scheme

Somers Town Community Sports Centre

Triyoga

Working Men`s College

Family support

Camden Children with Disabilities (MOSAIC)

Camden Mediation Centre

Crowndale Centre – Camden Council

Harmond Children`s Centre

Hestia

PACE

Sudanese Children in Need

Further/Adult Education

Finn-Guild

Richard Cobden Learning Centre

Working Men`s College

Healthcare

Amphill Practice

James Wigg Group Practice

Plender Street Practice

Prince of Wales Group Surgery

Homecare services

Arlington Road Project

Bluebird Care

Focus Care Link Approved Care Provider

Origin Housing Approved Care Provider

NHS Camden Provider Services

Higher education

Open University in London

Job Centre

Camden Town Jobcentre Plus

Kentish Town Job Centre

Learning disabilities services

Camden People First

Mayford Day Centre

PACE - Fairfield Play Centre

The Pirate Castle

Legal advice

184

St Micheal`s Church

Library services

Camden Town Library

Finn-Guild

Lunch club

Charlie Ratchford Resource Centre

Salvation Army Chalk Farm Corps

Mental health services

Ampthill Practice

Camden Early Intervention Service

Camden Listening and Counselling Centre

Crescent Project

Goodge Place Hostel

James Wigg Group Practice

Kings Terrace Project

Mind in Camden

Oakley Square Project

One Support Mornington Crescent

Open Minded - South Camden Community Team

St Mungo`s Hostel (Oakley Square)

St Mungo`s Supported Housing (Mornington Terrace)

Women and Health

Nursery care

Bright Horizons Regent`s Park Nursery

Camden Chinese Community Centre

Cavendish School Nursery Class

Fairfield Pre-School

Harmood Children`s Centre

Hawley Infant School

Octagon Nursery School

Ready Steady Go Camden

Richard Cobden Primary School

St. Marks Sq. Nursery School

St Mary and St Pancras Church of England Primary School

South Hampstead Synagogue

Woodentots Montessori Nursery

Over 60s' activities and services

Charlie Ratchford Resource Centre

Castlehaven Community Centre

Elderly Local People Scheme

Greenfield Pharmacy

Salvation Army

Somers Town Community Sport Centre

South Hampstead Synagogue

Pharmacy

Boots

Day Lewis Pharmacy

J&HJ Vaghela

JP Pharmacy

Morrison's Pharmacy

Rowlands Pharmacy

Post Office

Camden High Street Post Office

Primary School

Hawley Infant School

Holy Trinity and St Silas Church of England Primary School

Our Lady's Roman Catholic Primary School

Primrose Hill Primary School

Richard Cobden Primary School

St Mary and St Pancras Church of England Primary School

St Michael's Camden Town Church of England Primary School

Sexual health advice

Morrison's Pharmacy

Crowndale Health Centre

Training courses

Collective Academy

Pirate Castle

SOVA Camden - Young People Mentoring Project

Sudanese Children in Need

Youth club

Camden Integrated Youth Support Service (IYSS) After School Club

Castlehaven Community Centre

Integrated Youth Support Services

Pirate Castle

Somers Town Youth Centre

Welfare advice

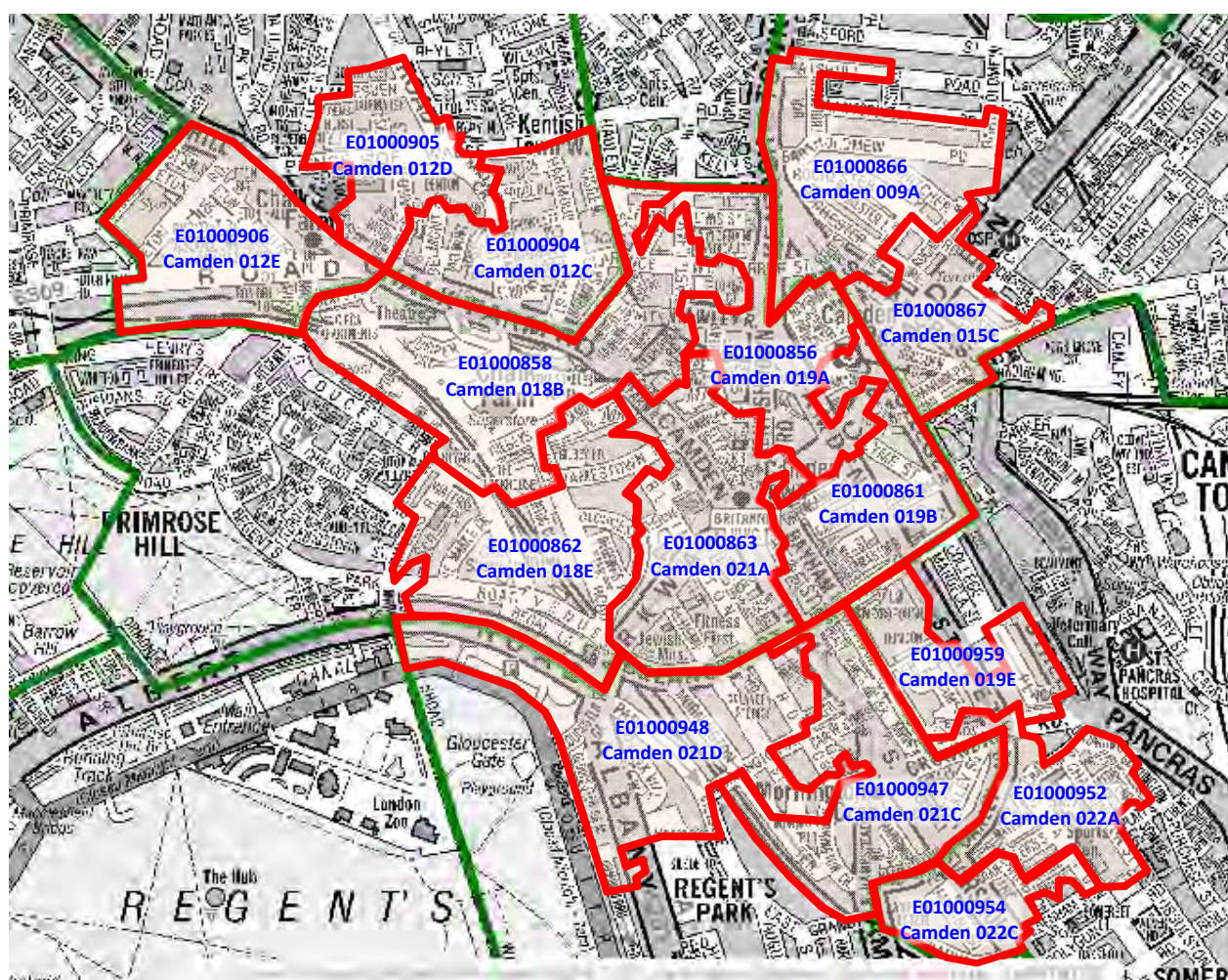
Harmond Children's Centre

James Wigg Group Practice

Thames Reach Spectrum Centre

Women and Health

Appendix: Lower Super Output Areas



LSOA code	LSOA name
E01000856	Camden 019A
E01000858	Camden 018B
E01000861	Camden 019B
E01000862	Camden 018E
E01000863	Camden 021A
E01000866	Camden 009A
E01000867	Camden 015C
E01000904	Camden 012C
E01000905	Camden 012D
E01000906	Camden 012E
E01000947	Camden 021C
E01000948	Camden 021D
E01000952	Camden 022A
E01000954	Camden 022C
E01000959	Camden 019E

The maps contained in this document are used under licence

A-Z: Reproduced by permission of Geographers' A-Z Map Co. Ltd. © Crown Copyright and database rights OS 100017302